



Werneth Road, Woodley, SK6 1HW

Situated within one of Woodley's most sought-after locations, this extended, bay-fronted semi-detached home offers spacious family accommodation over three floors including a superb 20ft square open-plan living, dining and kitchen space overlooking the attractive rear garden. With gas fired central heating and double glazing the accommodation includes an entrance hall, downstairs w.c., a lounge which is separate from the open-plan living space, 4 bedrooms (one on the second floor) and a family bathroom. Outside there is a large driveway to the front and a good sized attractive garden to the rear that enjoys a sunny southerly aspect. Tenure: Freehold. Council Tax Band: D. Energy Rating: C.

Price Guide: Offers Over: £470,000



ENTRANCE HALL

13' 7" x 7' 10" (4.14m x 2.39m)



GROUND FLOOR WC

LOUNGE

14' 4" max x 13' 4" (4.37m x 4.06m)



FIRST FLOOR LANDING

BEDROOM ONE

14' 5" max x 12' 6" (4.39m x 3.81m)

OPEN PLAN LIVING/DINING/KITCHEN SPACE

22' 8" max x 20' 10" (6.90m x 6.35m)



BEDROOM TWO

12' 10" x 12' 4" (3.91m x 3.76m)



SECOND FLOOR LANDING

8' 3" x 7' 5" (2.51m x 2.26m)

BEDROOM THREE

12' 3" x 11' 0" max (3.73m x 3.35m)



BEDROOM FOUR

8' 4" x 7' 11" (2.54m x 2.41m)

FAMILY BATHROOM

7' 10" x 6' 4" (2.39m x 1.93m)



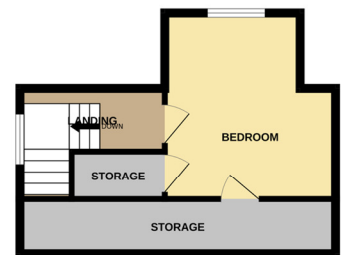
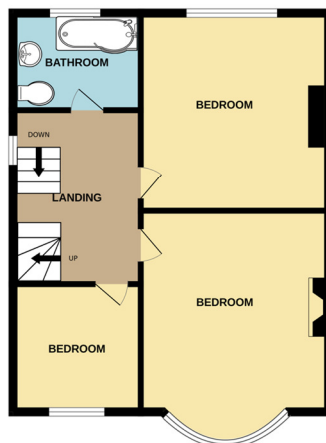
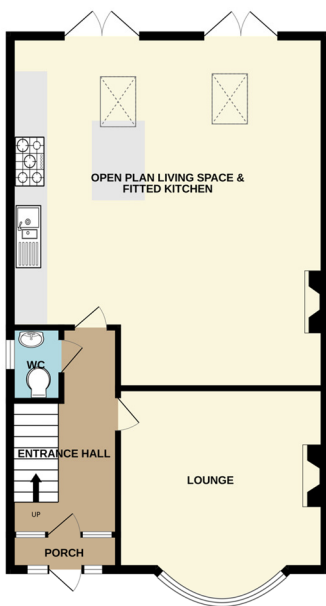
OUTSIDE



GROUND FLOOR

1ST FLOOR

2ND FLOOR



Whilst every attempt has been made to ensure the accuracy of the floorplan contained here, measurements of doors, windows, rooms and any other items are approximate and no responsibility is taken for any error, omission or mis-statement. This plan is for illustrative purposes only and should be used as such by any prospective purchaser. The services, systems and appliances shown have not been tested and no guarantee as to their operability or efficiency can be given.
Made with Metropix ©2024



Thomas Lardner Estate Agents, which is a trading name of Romiley Residential Ltd, for themselves and for the vendors or lessors of this property whose agents they are give notice that: (1) all measurements are approximate and any plans provided are not to scale; (2) the particulars are set out as a general outline only for the guidance of intending purchasers or lessors, and do not constitute, nor constitute part of, an offer or contract; (3) we have not tested any apparatus, equipment, fixtures, fittings or services, and so cannot verify that they are in working order or fit for purpose; (4) solicitors should confirm moveable items described in these particulars are, in fact, included in the sale since circumstances change during marketing or negotiations.

T709 Printed by Ravensworth 01670 713330



Thomas Lardner Estate Agents
4 The Precinct, Romiley, Stockport, Cheshire SK6 4EA
0161 494 5136
enquiries@thomaslardner.com
www.thomaslardner.com