



Quarry Road, Romiley, SK6 4BA

A rare opportunity to purchase a unique and prestige, true bungalow set within a secluded location close to attractive countryside and yet just a short distance from Romiley village centre and the railway station. The property was constructed just over 50 years ago and occupies a generous plot providing beautiful gardens, plenty of parking space and a good sized double garage. The accommodation includes an entrance hall, lounge with adjoining dining area, conservatory, modern fitted kitchen, three good sized bedrooms and a spacious bathroom with shower cubicle in addition to the bath. Tenure: Freehold. Council Tax Band: E, EPC rating: To follow.

Price Guide: £675,000



ENCLOSED PORCH

ENTRANCE HALL

LOUNGE

13' 6" x 13' 6" (4.11m x 4.11m)

Open way to:



DINING AREA

10' 5" x 9' 4" (3.17m x 2.84m)



CONSERVATORY

9' 9" x 9' 4" (2.97m x 2.84m)



KITCHEN

11' 5" x 9' 10" (3.48m x 2.99m)



BEDROOM ONE

14' 2" x 9' 10" (4.31m x 2.99m)



BEDROOM TWO

11' 8" x 10' 1" (3.55m x 3.07m)



BEDROOM THREE

11' 0" x 8' 10" (3.35m x 2.69m)



27' 0" x 15' 10" (8.22m x 4.82m)

OUTSIDE

The property is set behind a large lawned garden with adjoining cobbled driveway that extends to the side of the garage. The rear garden is equally generous and is secluded by established trees.



FAMILY BATHROOM

8' 5" x 7' 2" (2.56m x 2.18m)



VIEWING ARRANGEMENTS

Appointment is strictly by appointment with Thomas Lardner Romiley Office - telephone number 0161 494 5136.

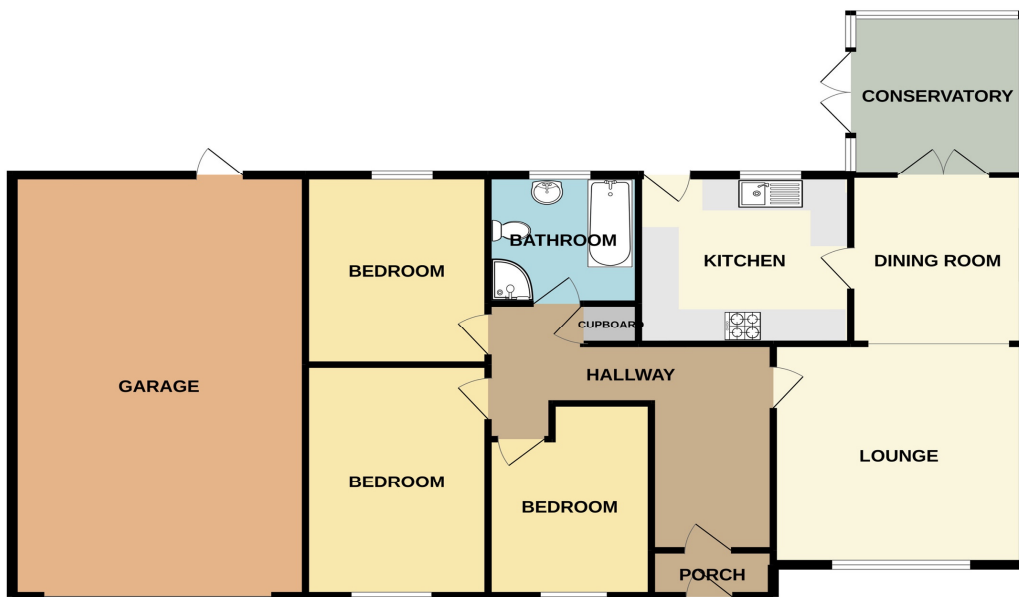
EPC Rating - To Follow

Council Tax Band - E

Tenure - Freehold

DOUBLE GARAGE

GROUND FLOOR



Whilst every attempt has been made to ensure the accuracy of the floorplan contained here, measurements of doors, windows, rooms and any other items are approximate and no responsibility is taken for any error, omission or mis-statement. This plan is for illustrative purposes only and should be used as such by any prospective purchaser. The services, systems and appliances shown have not been tested and no guarantee as to their operability or efficiency can be given.
Made with Metropix 62022



Thomas Lardner Estate Agents, which is a trading name of Romiley Residential Ltd, for themselves and for the vendors or lessors of this property whose agents they are give notice that: (1) all measurements are approximate and any plans provided are not to scale; (2) the particulars are set out as a general outline only for the guidance of intending purchasers or lessors, and do not constitute, nor constitute part of, an offer or contract; (3) we have not tested any apparatus, equipment, fixtures, fittings or services, and so cannot verify that they are in working order or fit for purpose; (4) solicitors should confirm moveable items described in these particulars are, in fact, included in the sale since circumstances change during marketing or negotiations.

T709 Printed by Ravensworth 01670 713330



Thomas Lardner Estate Agents
4 The Precinct, Romiley, Stockport, Cheshire SK6 4EA
0161 494 5136
enquiries@thomaslardner.com
www.thomaslardner.com