

SIGNATURE

NORTH EAST

OFFICIALLY RATED THE NO.1 ESTATE AGENT IN THE NORTH EAST





📍 55 Esplanade, Whitley Bay NE26 2AS

55 Esplanade, Whitley Bay NE26 2AS

Offers In The Region Of £600,000

Signature North East welcomes you to this exceptional three-bedroom penthouse apartment, spanning an impressive 2,300 square feet and perfectly positioned on the iconic Whitley Bay seafront. Boasting uninterrupted sea views from your window and a private balcony overlooking the beach, this is coastal living at its finest. Enjoy all the fantastic local amenities Whitley Bay has to offer, from a vibrant selection of bars, shops and eateries to well-regarded schools and excellent transport links, all of which contribute to a truly enviable location. Convenient lift access to the apartment further enhances ease of living.

Upon entering the apartment, you are greeted by a welcoming hallway leading into a stunning kitchen, where undisturbed sea views set a calming tone. This stylish and well-equipped space features a range of bright wall and base units, sleek worktops, and a breakfast bar, with all kitchen appliances included. The kitchen is generously sized, with room for a cosy seating area and direct access to the balcony, perfect for enjoying your morning coffee with the sea breeze. From the kitchen, you can also access a separate dining room, a wonderful setting for hosting family and friends. Completing the main living space is a beautifully bright and spacious living room, flooded with natural light and offering even more captivating coastal views.

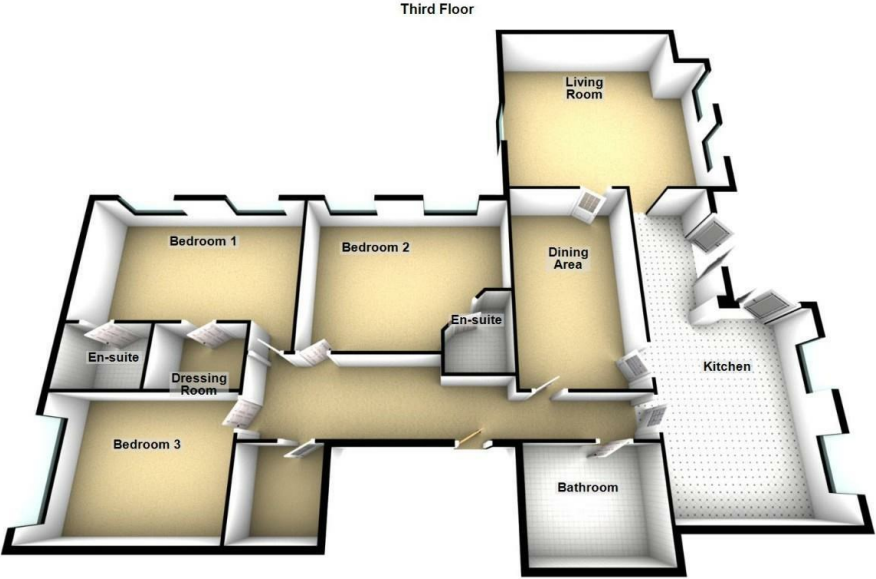
Continuing through the property, you'll find three well-proportioned double bedrooms. The principal bedroom boasts both a private en-suite and a dressing room, while bedroom two also benefits from its own en-suite, ensuring convenience and comfort. The modern family bathroom features a bathtub, shower, wash basin, and WC.

Externally, the generous balcony stands out, offering spectacular views over Whitley Bay Beach and ample space for outdoor seating. An allocated space in the private car park provides convenient off-street parking, adding to the practicality of this truly special home.



PLEASE NOTE THAT THE VENDOR HAS CERTIFIED THE PROPERTY INFORMATION AND IMAGES.

PROPERTY FLOORPLAN



Total area: approx. 219.7 sq. metres (2384.7 sq. feet)

Measurements:

Living Room
22'8" x 19'5"

Dining Area
19'10" x 11'7"

Bathroom
9'5" x 11'7"

Bedroom One
20'8" x 6'6"

En Suite One
6'4" x 7'10"

Bedroom Two
15'2" x 19'8"

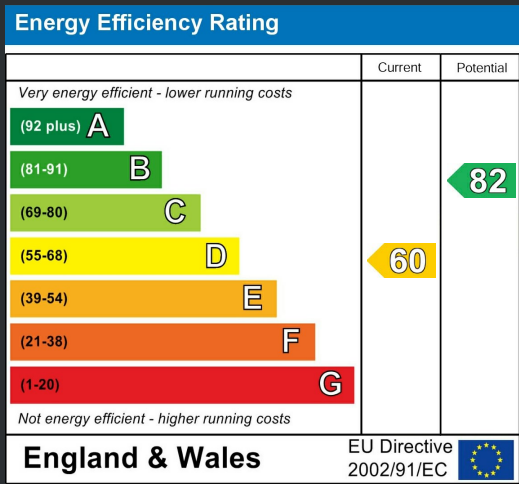
En Suite Two
6'2" x 7'7"

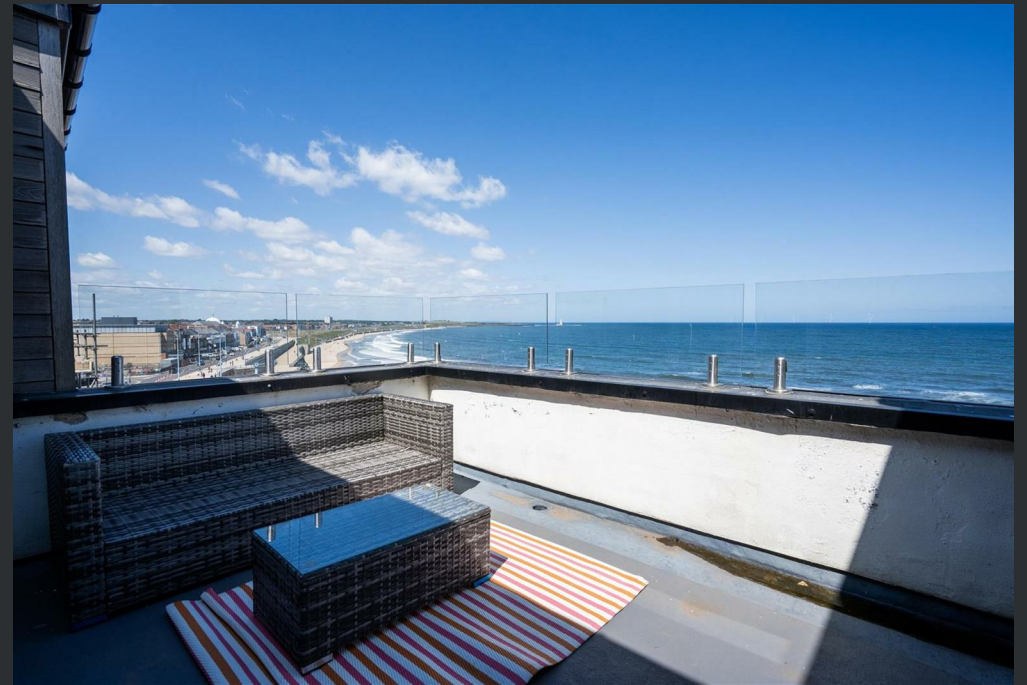
Bedroom Three
12'1" x 16'7"

Kitchen
30'10" x 15'2"

Sun Room
11'3" x 7'7"

Dressing Room
5'11" x 8'4"







More 5 Star Customer Reviews than any other Agent based in the North East on allAgents.co.uk



SALES

LETTINGS

FINANCE

LAW

WE COVER THE WHOLE OF THE NORTH EAST

Whitley Bay
0191 251 3344

Cramlington
01670 897 213

Tynemouth
0191 296 6689

Morpeth
01670 513 966

Ponteland
01661 820 082

Wallsend
0191 432 4151

Alnwick
01665 511 800

Heaton
0191 432 4275

Forest Hall
0191 266 9966

Other locations
0191 640 3523

Newcastle
0191 640 2284

Durham
0191 303 8252

Gosforth
0191 640 3523

Sunderland
0191 543 6390

Whickham
0191 432 5102

Gateshead
0191 432 4294

Jesmond
0191 281 1037

Killingworth
0191 640 3602

Ryton
0191 413 9845

Head Office &
Lettings
0191 253 4815

*Highest recommended 5-star reviews than any other Estate Agent based in the North East on allAgents.co.uk - The UK's Largest Customer Review Website for the Property Industry & Awarded Best Estate Agency 2018 & 2019 - North East England by SME News