

# SIGNATURE

## NORTH EAST

OFFICIALLY RATED THE NO.1 ESTATE AGENT IN THE NORTH EAST







Millbank Close, SR7 0GA



# Millbank Close SR7 0GA

Offers Over £650,000

Signature North East is delighted to welcome to the market this exceptional four-bedroom detached luxury stone-built property, uniquely self-built and offering a private and secure lifestyle. Nestled in the charming town of Seaham, this exquisite home enjoys a prime location just a short stroll from Seaham Hall Beach. It's an ideal setting for families, with Seaham High School conveniently situated behind the property, ensuring easy access for students. The area is well-served by local amenities, and Seaham Train Station offers effortless connections to destinations like Whitby, Hexham, and the Metrocentre.

Upon entering the property, you are welcomed by a central hallway that leads to a large, stylish W.C. The journey begins with the spacious living room, bathed in natural light from a large window and enhanced by a bespoke ceiling feature, adding a touch of elegance. The heart of the home is the open-plan kitchen/dining/family area, featuring a stunning central island with seating for four and ample space for a dining table. The kitchen boasts attractive wall and base units complemented by sleek countertops, while integrated appliances including a fridge, oven, microwave, induction hob, and wine chiller add a touch of modern luxury. Bi-fold doors seamlessly connect the indoor and outdoor spaces, inviting you to enjoy the beautifully landscaped rear garden. A striking built-in fireplace in the family area and a unique ceiling feature further elevate this stylish and contemporary space. Adjacent to the kitchen is a large utility room with additional rear access. Throughout the home, solid wood fire doors add to the overall quality and safety.

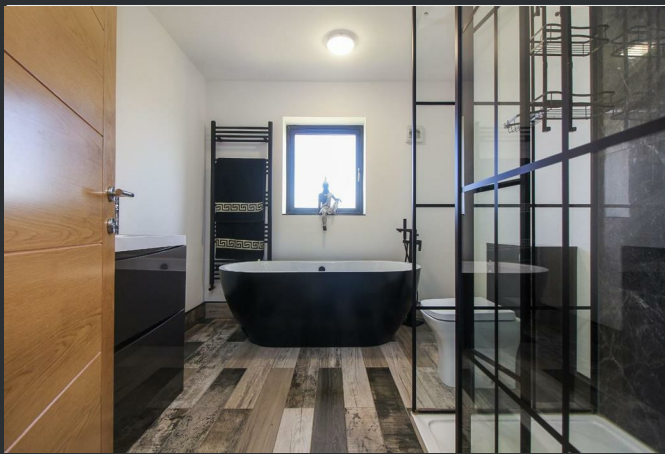
Ascending to the first floor, you will discover four generously sized bedrooms, each capable of comfortably accommodating a double bed and furnishings. Bedrooms 1 and 2 offer ample storage with built-in wardrobes, while the master bedroom boasts a luxurious en-suite featuring a walk-in shower, W.C., and hand basin. Completing this floor is a trendy and luxurious bathroom, featuring a freestanding bathtub, walk-in shower, hand basin, and W.C. The loft area is expansive, fully boarded, and compliant with fire regulations, providing an excellent opportunity for potential development, subject to planning permission.

Externally, this property offers a substantial garden with a large lawn and ample patio space, perfect for outdoor furniture and enjoying the sea views, which are guaranteed to remain unobstructed due to the adjacent school playing field. The plot, approximately the size of half a football pitch, offers ample space for various outdoor activities. The property is extremely secure, with an electric gate at the front and a massive driveway capable of accommodating up to 20 cars. Additionally, there is a double-level double garage with loft space above, providing further storage or development potential.

Furthermore, the property comes with live permission for a business to run out of the cabin on the land. There is also planning permission for another house, a mirror image of the existing property, offering an excellent investment or expansion opportunity.





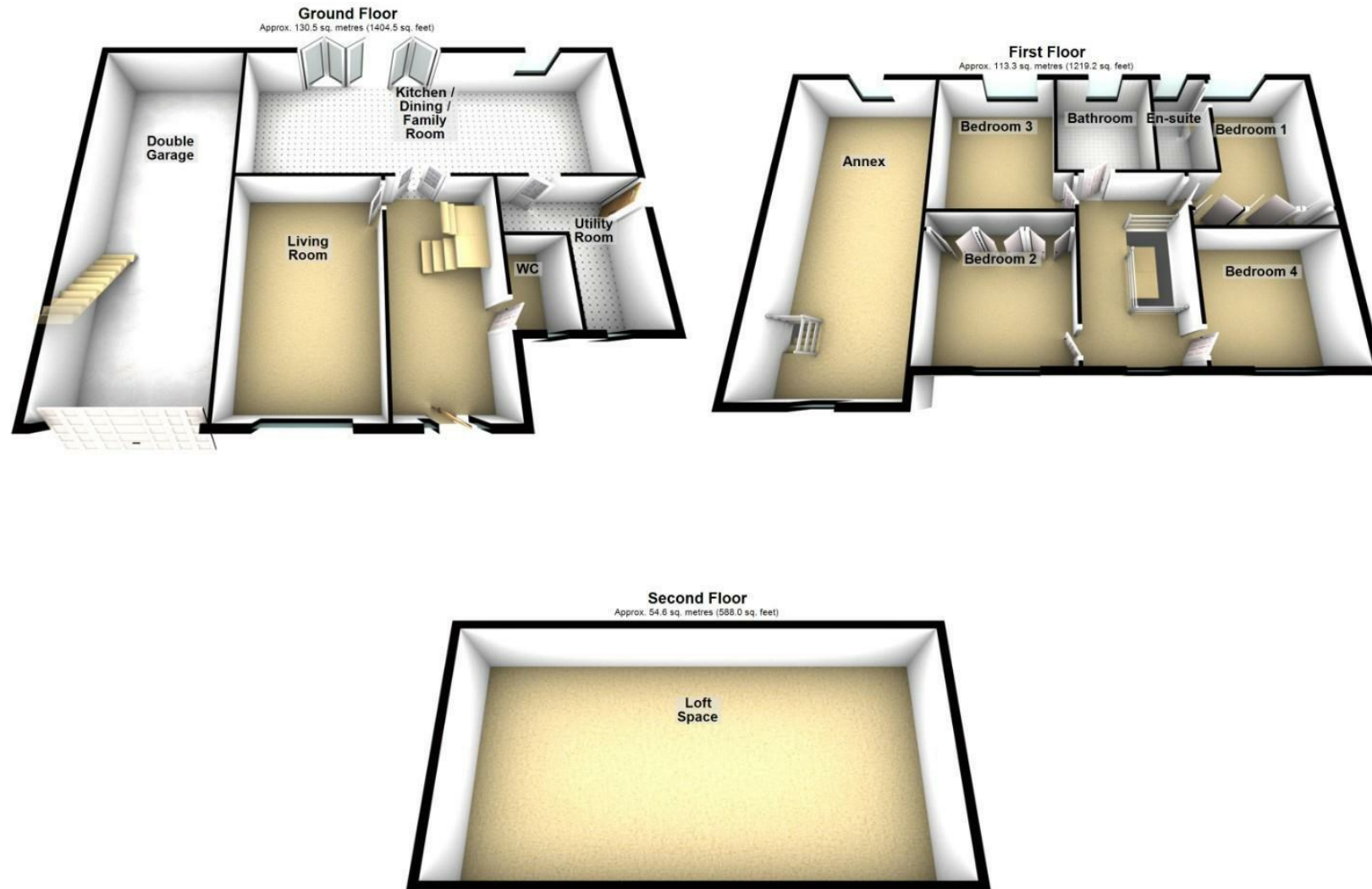


### Why Signature?

Signature North East reach 150,000 per month on social media. We cover 19 locations in the North East. At signature we keep our doors open from 8AM - 8PM, when other estate agents are closed. We are a customer 5 star rated agent on allagents.co.uk. With a dedicated group of negotiators across the region, to the 'behind the scenes' Head Office team, each member of staff is passionate about the industry and cares about every client; you're at the heart of everything we do!

PLEASE NOTE THAT THE VENDOR HAS CERTIFIED THE PROPERTY INFORMATION AND IMAGES.

# PROPERTY FLOORPLAN



Total area: approx. 298.4 sq. metres (3211.8 sq. feet)

Please be advised the floorplans are not drawn to scale and are to be used to give an idea of the layout of the property.  
Plan produced using PlanUp.

EPC RATING: B





More 5 Star Customer Reviews than any other Agent based in the North East on [allAgents.co.uk](https://allagents.co.uk)



**SALES**

**LETTINGS**

**FINANCE**

**LAW**

**WE COVER THE WHOLE OF THE NORTH EAST**

Whitley Bay  
0191 251 3344

Cramlington  
01670 897 213

Tynemouth  
0191 296 6689

Morpeth  
01670 513 966

Ponteland  
01661 820 082

Wallsend  
0191 432 4151

Alnwick  
01665 511 800

Heaton  
0191 432 4275

Forest Hall  
0191 266 9966

Other locations  
0191 640 3523

Newcastle  
0191 640 2284

Durham  
0191 303 8252

Gosforth  
0191 640 3523

Sunderland  
0191 543 6390

Whickham  
0191 432 5102

Gateshead  
0191 432 4294

Jesmond  
0191 281 1037

Killingworth  
0191 640 3602

Ryton  
0191 413 9845

Head Office &  
Lettings  
0191 253 4815

\*Highest recommended 5-star reviews than any other Estate Agent based in the North East on [allAgents.co.uk](https://allagents.co.uk) - The UK's Largest Customer Review Website for the Property Industry & Awarded Best Estate Agency 2018 & 2019 - North East England by SME News