

SIGNATURE

NORTH EAST

OFFICIALLY RATED THE NO.1 ESTATE AGENT IN THE NORTH EAST





 Alder Way, Newcastle Upon Tyne NE15 9DD

Alder Way, Newcastle Upon Tyne NE15 9DD

Offers In The Region Of £375,000

Signature North East welcomes you to this stunning five-bedroom detached house on Alder Way, Newcastle Upon Tyne. This charming property offers the perfect blend of space, comfort, and style, making it ideal for those seeking a new home. Situated in a desirable location, this home provides easy access to local amenities, schools, and transport links, ensuring convenience for both families and professionals. The nearby Throckley Primary School, rated five stars, is just yards away, making it perfect for growing families.

As you step inside, you are greeted by a spacious living area perfect for entertaining guests or relaxing with family. To your left, a cosy snug area from a garage conversion is ideal for family movie nights. To your right, the large and bright living room features a beautiful fireplace and media wall, perfect for hosting formal gatherings. The kitchen, dining, and family area is the hub of the home, offering an ideal setting for family and friends to gather. Two sets of French doors seamlessly merge the outdoor and indoor spaces, ensuring ample light and space for your desired furniture and dining table. The kitchen boasts an array of wall and base units, providing plenty of storage and counter space. A peninsula with a seating area offers a convenient spot for informal meals. The kitchen is equipped with integrated appliances, including a double oven, microwave, and induction hob. The ground floor is completed with a utility room and a WC.

Upstairs, the ample gallery landing provides access to all the principal rooms. Five spacious bedrooms await, each designed for relaxation and comfort. The master bedroom offers exceptional space with two windows, making it bright and inviting. It features an en-suite with a walk-in shower, vanity hand basin, and WC, and is completed with a fitted wardrobe. Bedroom two also has an en-suite, can easily accommodate a king-size bed, and includes a fitted wardrobe.

Bedrooms three and four also offer fitted wardrobes for your storage convenience. Bedroom five can easily accommodate a double bed, but a single bed fits more comfortably; it is currently used as an office. This floor is completed with three additional bedrooms and a family bathroom, featuring a bathtub and a walk-in shower.

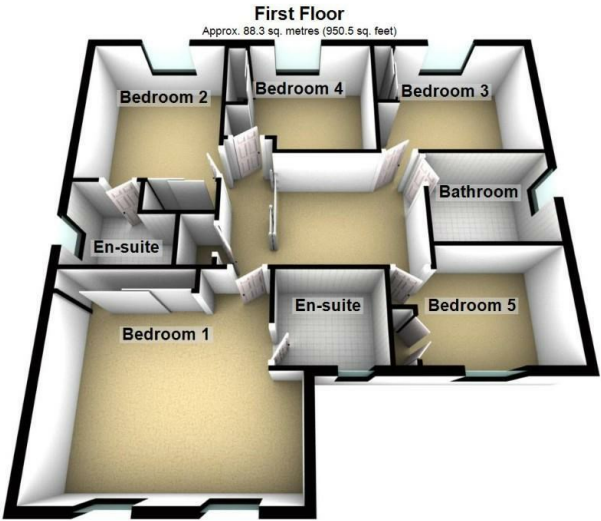
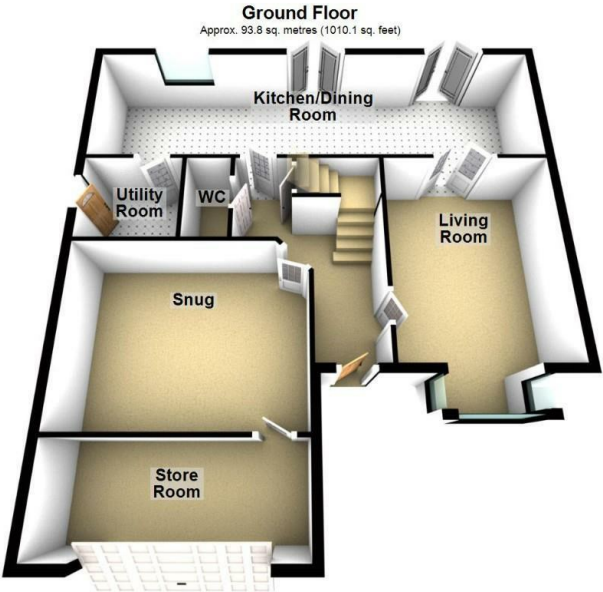
Outside, the property features a beautifully landscaped garden, perfect for enjoying the outdoors on sunny days, and it is beautifully maintained with low upkeep. A gorgeous patio area with a bespoke awning provides a delightful space for outdoor dining and relaxation. The beautiful awning is electric and has lighting and heating fitted. For parking, there is a driveway that accommodates two off-road vehicles.

Don't miss out on the opportunity to make this wonderful house your new home. Contact us today to arrange a viewing and experience the beauty and comfort of Alder Way for yourself.

PLEASE NOTE THAT THE VENDOR HAS CERTIFIED THE PROPERTY INFORMATION AND IMAGES.



PROPERTY FLOORPLAN



Total area: approx. 182.1 sq. metres (1960.6 sq. feet)
Please be advised the floorplans are not drawn to scale and are to be used to give an idea of the layout of the property
Plan produced using PlanUp.

Measurements:

- Living Room
17'11" x 11'8"
- Kitchen / Dining Room
33'7" x 9'3"
- Snug
15'11" x 12'5"
- Utility Room
7'4" x 6'3"
- WC
6'3" x 3'1"
- Bedroom One
15'11" x 14'0"
- En Suite
7'1" x 6'2"
- Bedroom Two
11'7" x 10'0"
- En Suite
7'4" x 6'1"
- Bedroom Three
12'1" x 9'6"
- Bedroom Four
10'11" x 9'6"
- Bedroom Five
11'7" x 7'10"
- Bathroom
8'6" x 6'9"

Energy Efficiency Rating		
	Current	Potential
Very energy efficient - lower running costs		
(92 plus) A		92
(81-91) B	85	
(69-80) C		
(55-68) D		
(39-54) E		
(21-38) F		
(1-20) G		
Not energy efficient - higher running costs		
England & Wales		
EU Directive 2002/91/EC		





More 5 Star Customer Reviews than any other Agent based in the North East on allAgents.co.uk



SALES

LETTINGS

FINANCE

LAW

WE COVER THE WHOLE OF THE NORTH EAST

Whitley Bay
0191 251 3344

Cramlington
01670 897 213

Tynemouth
0191 296 6689

Morpeth
01670 513 966

Ponteland
01661 820 082

Wallsend
0191 432 4151

Alnwick
01665 511 800

Heaton
0191 432 4275

Forest Hall
0191 266 9966

Other locations
0191 640 3523

Newcastle
0191 640 2284

Durham
0191 303 8252

Gosforth
0191 640 3523

Sunderland
0191 543 6390

Whickham
0191 432 5102

Gateshead
0191 432 4294

Jesmond
0191 281 1037

Killingworth
0191 640 3602

Ryton
0191 413 9845

Head Office &
Lettings
0191 253 4815

*Highest recommended 5-star reviews than any other Estate Agent based in the North East on allAgents.co.uk - The UK's Largest Customer Review Website for the Property Industry & Awarded Best Estate Agency 2018 & 2019 - North East England by SME News