


SIGNATURE

NORTH EAST

OFFICIALLY RATED THE NO.1 ESTATE AGENT IN THE NORTH EAST





 Heather Lea, Blyth NE24 4DF

Heather Lea, Blyth NE24 4DF

Offers Over £345,950

Signature North East welcomes you to Heather Lea, Blyth—a modern property built in 2010, offering a perfect blend of contemporary amenities and classic British charm. Located in a vibrant community, the home is close to a range of amenities, including nearby primary and secondary schools, and parks such as Ridley Park, which offer green spaces and sports facilities. Excellent public transport links provide easy access to surrounding areas, Newcastle, and other nearby cities, making it an ideal location for families.

This home features a well-thought-out layout designed for comfortable living. As you step inside, the ample hallway leads to a spacious living room with a bay window, flooding the space with natural light recently fitted with elegant wood shutters. Opposite, a study offers the perfect home office or children's study space. The heart of the home is the open-plan family/kitchen/dining room, ideal for gatherings. The kitchen is equipped with a dishwasher, double oven, gas hob, an abundance of storage, and a central island with seating for informal meals. The dining area features bi-fold doors, seamlessly connecting the indoors to the outdoors, while the family room offers a space to keep an eye on children. A WC completes the ground floor.

Upstairs, the first floor houses three well-appointed double bedrooms. The master bedroom features a bay window, fitted "his and hers" wardrobes, and an en-suite with a walk-in shower for easy morning routines. A sleek three-piece family bathroom includes a bathtub with a shower. On the second floor, an additional master bedroom with fitted wardrobes and an en-suite transforms this home into a four-bedroom residence.

Outside, the large back garden, landscaped last year, features lush greenery, two patio seating areas, and a summer house converted into a bar.

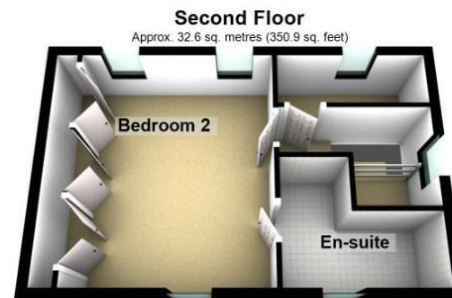
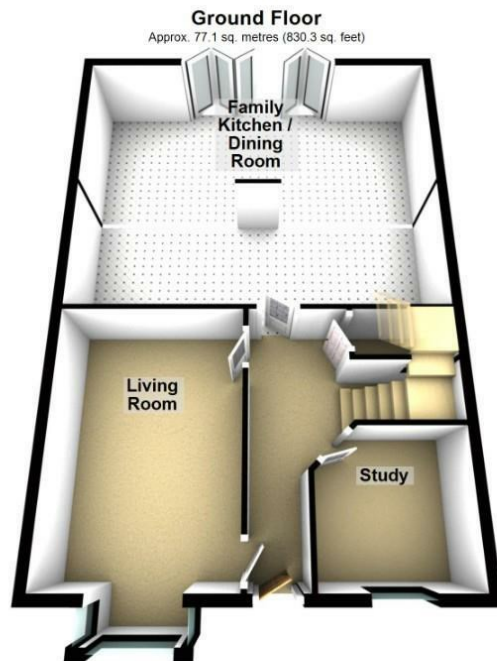
A single garage and double driveway provide parking for three cars, with an additional visitor bay for guests. The property also includes an electric charge point, full CCTV coverage, and solar panels.

Don't miss the opportunity to make this stunning property your new home, the perfect place to create lasting memories. Contact Signature North East today to book your viewing.



PLEASE NOTE THAT THE VENDOR HAS CERTIFIED THE PROPERTY INFORMATION AND IMAGES.

PROPERTY FLOORPLAN



Total area: approx. 164.4 sq. metres (1769.1 sq. feet)

Please be advised the floorplans are not drawn to scale and are to be used to give an idea of the layout of the property.
Plan produced using PlanUp.

Measurements:

Living Room
15'9" x 10'11"

Family / Kitchen / Dining Room
23'7" x 18'8"

Study
8'8" x 8'8"

Bedroom One
24'7" x 10'11"

En Suite
6'11" x 3'8"

Bedroom Two
14'9" x 13'10"


En Suite
9'5" x 7'9"

Bedroom Three
9'0" x 8'3"

Bedroom Four
8'3" x 8'3"

Bathroom
8'3" x 6'0"

Energy Efficiency Rating

	Current	Potential
Very energy efficient - lower running costs		
(92 plus) A		
(81-91) B	85	86
(69-80) C		
(55-68) D		
(39-54) E		
(21-38) F		
(1-20) G		
Not energy efficient - higher running costs		
England & Wales		EU Directive 2002/91/EC 





More 5 Star Customer Reviews than any other Agent based in the North East on allAgents.co.uk



SALES

LETTINGS

FINANCE

LAW

WE COVER THE WHOLE OF THE NORTH EAST

Whitley Bay
0191 251 3344

Cramlington
01670 897 213

Tynemouth
0191 296 6689

Morpeth
01670 513 966

Ponteland
01661 820 082

Wallsend
0191 432 4151

Alnwick
01665 511 800

Heaton
0191 432 4275

Forest Hall
0191 266 9966

Other locations
0191 640 3523

Newcastle
0191 640 2284

Durham
0191 303 8252

Gosforth
0191 640 3523

Sunderland
0191 543 6390

Whickham
0191 432 5102

Gateshead
0191 432 4294

Jesmond
0191 281 1037

Killingworth
0191 640 3602

Ryton
0191 413 9845

Head Office &
Lettings
0191 253 4815

*Highest recommended 5-star reviews than any other Estate Agent based in the North East on allAgents.co.uk - The UK's Largest Customer Review Website for the Property Industry & Awarded Best Estate Agency 2018 & 2019 - North East England by SME News