

# SIGNATURE

## NORTH EAST

OFFICIALLY RATED THE NO.1 ESTATE AGENT IN THE NORTH EAST







Bluestone Court, Newcastle Upon Tyne NE27 0GH



# Bluestone Court

## Newcastle Upon Tyne NE27 0GH

Asking Price £575,000

Signature North East invites you to Bluestone Court, where this captivating detached house is nestled, in the charming area of Backworth in Newcastle Upon Tyne. This modern estate benefits from a prime location, providing convenient access to the A19 highway. You'll discover the picturesque shores and seafront of Whitley Bay with its pristine sandy beaches and breath-taking coastal vistas just a short drive away. For your daily needs, the nearby Northumberland Park offers a variety of shops, Metro connections, and supermarkets. Silverlink Retail Park is conveniently close, featuring an array of amenities. The proximity of popular schools right at their doorstep makes this neighbourhood appealing to families.

Welcome to the hallway, where you will discover the ground floor's primary rooms. To your right, the living room invites you to rest and enjoy quality time with your loved ones. This space provides the perfect environment for formal entertainment, with its bright atmosphere and gas fireplace feature wall. From here, you are welcomed into the open-plan family/kitchen/dining room—a bright and spacious family retreat. The family room serves as the perfect social hub of the home, allowing you to keep an eye on the kids or top up your guests' drinks. Bifold doors seamlessly connect the indoor and outdoor spaces. The dining area, nestled between the family room and the kitchen, is the ideal spot for a large dining table, perfect for gatherings. The kitchen offers a plethora of wall and base units for ample storage and meal preparation, complete with integrated appliances including a dishwasher, full length fridge, microwave and double oven. Off the kitchen, the utility room provides additional base units for extra storage includes washer/dryer, and an additional door to the outside. The ground floor features underfloor heating, ensuring a comfortable environment throughout and is completed with a downstairs WC and hand basin ensuring practicality and comfort for all.

Upstairs, you will discover four well-appointed bedrooms, two of which feature en-suite bathrooms with walk-in showers, hand basins, and WCs. The master bedroom is a sanctuary of tranquillity, designed to offer the ultimate in relaxation, décor, and comfort. The room features a soothing colour palette creating a serene atmosphere. Two large windows flood the space with natural light, enhancing the airy feel of the room. A king-size bed fits effortlessly. The décor combines modern elegance with classic touches. The built-in Hammond wardrobes add both style and functionality, seamlessly blending with the room's décor while providing ample storage space. The master en-suite is a highlight, featuring floor-to-ceiling tiling in a soothing colour palette that creates a spa-like ambiance. This property is a perfect family sanctuary, providing ample space for everyone to rest and relax. The family bathroom is complete with a bathtub, a separate walk-in shower, a vanity hand basin, and a WC, ensuring convenience and comfort for all residents. Floor-to-ceiling tiles create a modern and spa-like atmosphere, providing a luxurious retreat within your home.

Outside, this property boasts a well-manicured garden with a large patio area running the length of the house, perfect for outdoor entertaining. There is also a neatly maintained grass area. The property offers three off-road parking spaces via the driveway and a double garage for additional parking and storage.

Bluestone Court offers a rare opportunity to own a spacious and modern home in a sought-after location. Don't miss out on the chance to make this house your own and create lasting memories in this beautiful setting. Call Signature North East today and book your viewing.





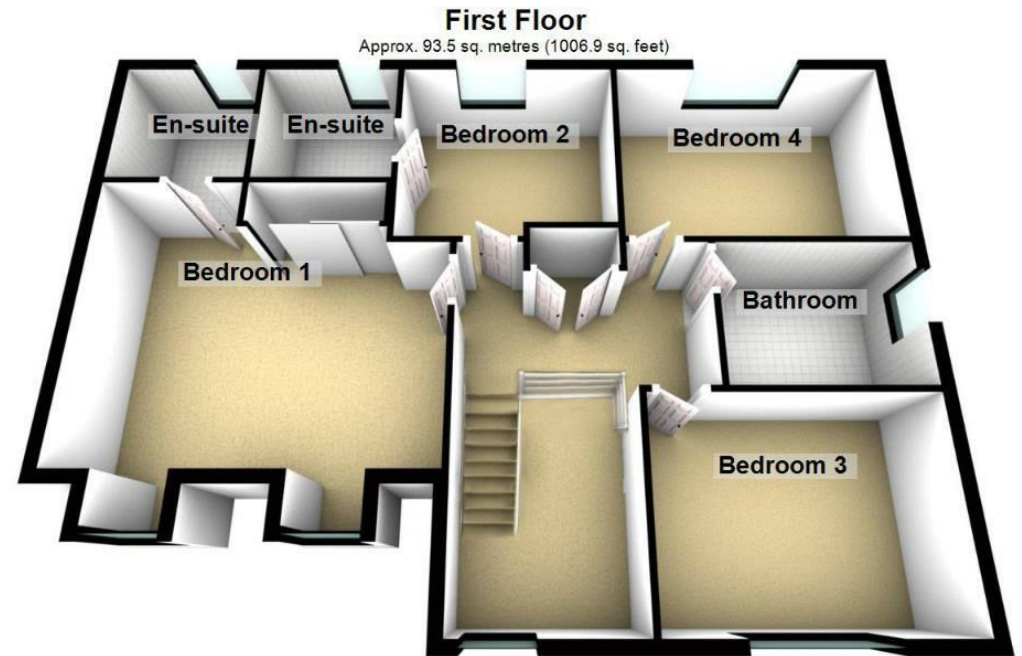
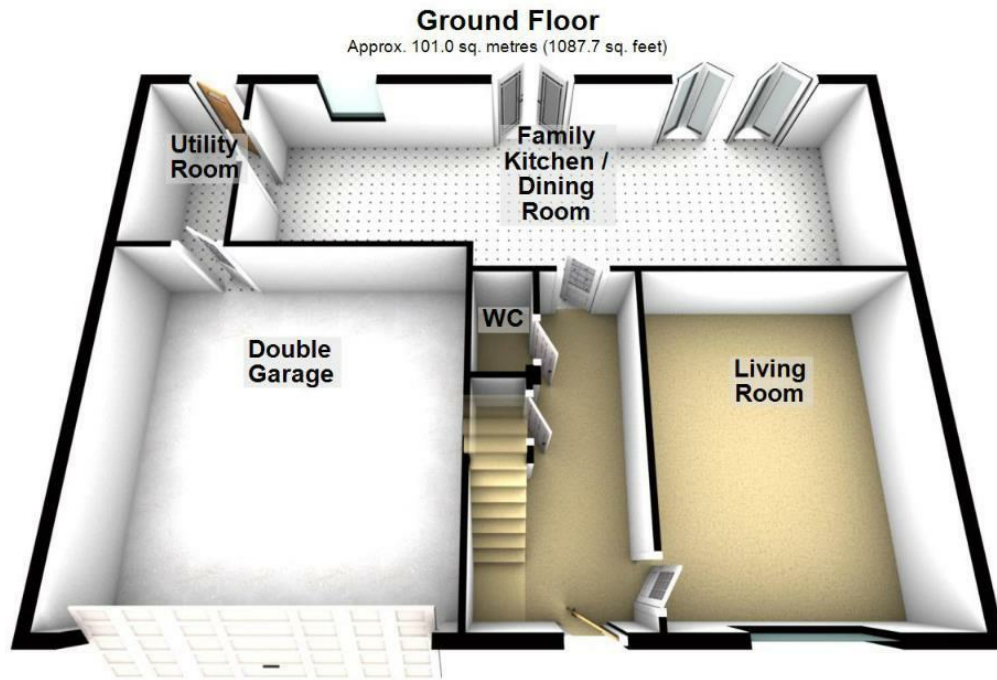


### Why Signature?

Signature North East reach 150,000 per month on social media. We cover 19 locations in the North East. At signature we keep our doors open from 8AM - 8PM, when other estate agents are closed. We are a customer 5 star rated agent on allagents.co.uk. With a dedicated group of negotiators across the region, to the 'behind the scenes' Head Office team, each member of staff is passionate about the industry and cares about every client; you're at the heart of everything we do!

PLEASE NOTE THAT THE VENDOR HAS CERTIFIED THE PROPERTY INFORMATION AND IMAGES.

# PROPERTY FLOORPLAN



Total area: approx. 194.6 sq. metres (2094.5 sq. feet)

Please be advised the floorplans are not drawn to scale and are to be used to give an idea of the layout of the property.  
Plan produced using PlanUp.

EPC RATING: B





More 5 Star Customer Reviews than any other Agent based in the North East on [allAgents.co.uk](https://allagents.co.uk)



**SALES**

**LETTINGS**

**FINANCE**

**LAW**

**WE COVER THE WHOLE OF THE NORTH EAST**

Whitley Bay  
0191 251 3344

Cramlington  
01670 897 213

Tynemouth  
0191 296 6689

Morpeth  
01670 513 966

Ponteland  
01661 820 082

Wallsend  
0191 432 4151

Alnwick  
01665 511 800

Heaton  
0191 432 4275

Forest Hall  
0191 266 9966

Other locations  
0191 640 3523

Newcastle  
0191 640 2284

Durham  
0191 303 8252

Gosforth  
0191 640 3523

Sunderland  
0191 543 6390

Whickham  
0191 432 5102

Gateshead  
0191 432 4294

Jesmond  
0191 281 1037

Killingworth  
0191 640 3602

Ryton  
0191 413 9845

Head Office &  
Lettings  
0191 253 4815

\*Highest recommended 5-star reviews than any other Estate Agent based in the North East on [allAgents.co.uk](https://allagents.co.uk) - The UK's Largest Customer Review Website for the Property Industry & Awarded Best Estate Agency 2018 & 2019 - North East England by SME News