

SIGNATURE

NORTH EAST

OFFICIALLY RATED THE NO.1 ESTATE AGENT IN THE NORTH EAST





 Barley Way, Newcastle Upon Tyne NE12 7BN

Barley Way, Newcastle Upon Tyne NE12 7BN

Offers Over £350,000

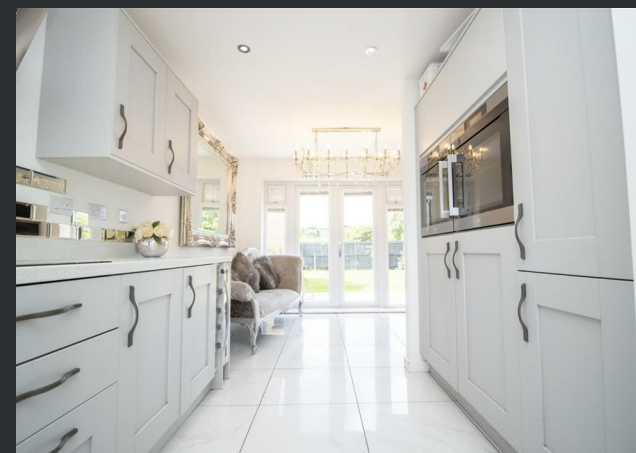
Signature North East welcomes you to this beautiful detached house located in Killingworth. With its spacious rooms, modern décor, and ample natural lighting, this property offers a comfortable and stylish living space. This property also benefits from nearby amenities, including schools, shops, making it an ideal location for families.

As you step inside, you'll be greeted by a welcoming hallway providing access to the living room, kitchen/diner, convenient downstairs w.c., a storage cupboard for your outdoor essentials, and the stairs to the first floor. Beginning with the living room, this space boasts generous space, modern décor, and ambient natural lighting. There's plenty of room to accommodate your desired furnishings, and patio doors open up to the back garden, allowing for seamless indoor-outdoor living. Moving to the kitchen/dining room, The sleek grey kitchen offers ample storage space and clutter-free cooking. It features integrated appliances, including an oven, and enjoys an abundance of natural light. The dining area comfortably accommodates a large dining table, providing the perfect setting for entertaining guests. Like the living room, this space also has patio doors leading to the back garden.

The first floor hosts four bedrooms, the spacious master bedroom easily accommodates a double bed, storage units, and other desired furnishings. It also features an en suite fitted with a shower, sink, and w.c. bedroom two contains ample space and an abundance of natural light, this bedroom comfortably fits a single bed and offers a pleasant atmosphere. Bedroom three offers plenty of space and can easily accommodate a double bed, making it an excellent guest room or a comfortable space for a child. The fourth bedroom provides a versatile space, perfect for a home office, dressing room, or nursery. It boasts lots of ambient natural lighting and modern décor. Lastly the tastefully decorated bathroom features a bath, sink and w.c.

The front garden offers a long driveway, a brief front lawn, and two parking spaces just outside the house, ensuring convenient parking arrangements. The spacious back garden provides ample room for garden furniture, entertaining guests, and creating beautiful memories. The patio area is perfect for relaxing on your garden furniture, allowing you to enjoy the outdoors in style.

This home has 4.5 years remaining on its new home warranty.



PLEASE NOTE THAT THE VENDOR HAS CERTIFIED THE PROPERTY INFORMATION AND IMAGES.

PROPERTY FLOORPLAN

Measurements:

Living Room
20'3" x 9'9"

Kitchen/diner
12'6" x 18'11"

Bedroom 1
13'1" x 10'5"

En suite
10'5" x 3'11"

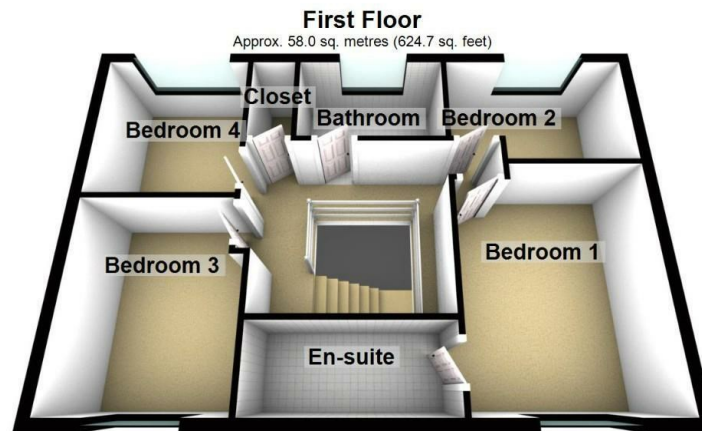
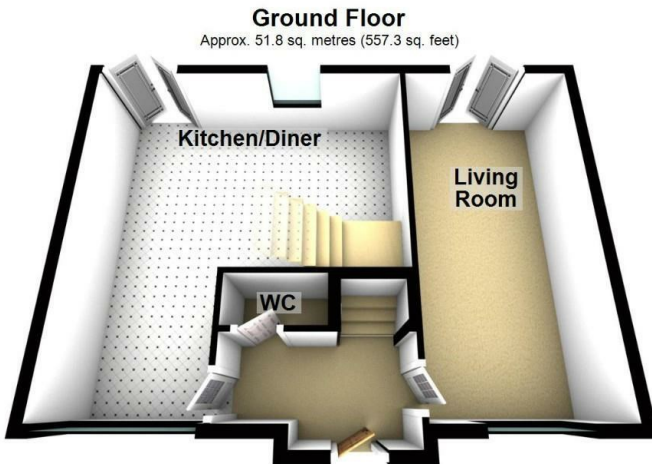
Bedroom 2
10'5" x 7'4"

Bedroom 3
11'1" x 9'1"

Bedroom 4
8'10" x 8'4"

closet
2'6" x 5'10"


Bathroom
8'5" x 5'1"



Total area: approx. 109.8 sq. metres (1182.0 sq. feet)

Please be advised the floorplans are not drawn to scale and are to be used to give an idea of the layout of the property.
Plan produced using PlanUp.

Energy Efficiency Rating

	Current	Potential
Very energy efficient - lower running costs		
(92 plus) A		
(81-91) B		
(69-80) C		
(55-68) D		
(39-54) E		
(21-38) F		
(1-20) G		
Not energy efficient - higher running costs		
England & Wales	EU Directive 2002/91/EC 	





More 5 Star Customer Reviews than any other Agent based in the North East on allAgents.co.uk



SALES

LETTINGS

FINANCE

LAW

WE COVER THE WHOLE OF THE NORTH EAST

Whitley Bay
0191 251 3344

Cramlington
01670 897 213

Tynemouth
0191 296 6689

Morpeth
01670 513 966

Ponteland
01661 820 082

Wallsend
0191 432 4151

Alnwick
01665 511 800

Heaton
0191 432 4275

Forest Hall
0191 266 9966

Other locations
0191 640 3523

Newcastle
0191 640 2284

Durham
0191 303 8252

Gosforth
0191 640 3523

Sunderland
0191 543 6390

Whickham
0191 432 5102

Gateshead
0191 432 4294

Jesmond
0191 281 1037

Killingworth
0191 640 3602

Ryton
0191 413 9845

Head Office &
Lettings
0191 253 4815

*Highest recommended 5-star reviews than any other Estate Agent based in the North East on allAgents.co.uk - The UK's Largest Customer Review Website for the Property Industry & Awarded Best Estate Agency 2018 & 2019 - North East England by SME News