



SAMUEL WOOD

Moorcroft Bushmoor, Craven Arms, SY7 8DW
Offers In The Region Of £565,000



Moorcroft

Bushmoor, Craven Arms, SY7 8DW



- Beautifully Presented Detached Home
- Spacious Lounge and Dining Room
- South West Facing Conservatory
- Stunning Gardens, Orchard & Wild Flower Areas
- Far Reaching Countryside Views
- Four Bedrooms, One En-Suite Bathroom
- Kitchen / Breakfast Room & Utility Room
- Family Bathroom
- Garage, Ample Driveway Parking
- Located Within The Shropshire Hills National Landscape

Built in 1982, located a secluded position, and within the Shropshire Hills National Landscape, Moorcroft offers spacious, versatile, and potentially multi-generational accommodation. With four bedrooms, and two bathrooms arranged over two floors, the property benefits from far reaching views towards the local landmarks of Flounders Folly and the Wenlock Edge.

The gardens at Moorcroft, a key feature of the property, are stocked with a variety of shrubs, herbaceous plants, an apple and pear tree orchard, a herb garden, wild flower areas, and a green house. The property also includes a wild life pond, bird boxes and bee hotels, truly a gardeners delight.

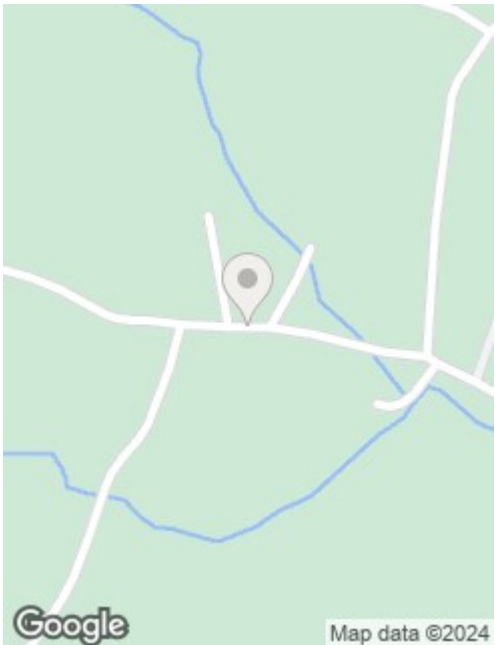
Bushmoor is a hamlet within the civic parish of Wistanstow and is located about four miles south of Church Stretton. It has the advantage of being within the heart of the beautiful rural south Shropshire countryside with easy access to the A49 just 1 mile away. There are excellent railway connections at Church Stretton and Craven Arms, and the 435 bus from Ludlow to Shrewsbury passes through the hamlet on a regular basis. The village of Wistanstow lies 1 mile away and provides a local community village shop, primary school, church and village hall.

The Shropshire Hills National Landscape, formerly the Shropshire Hills AONB, is famous for its leisure pursuits that include excellent walking, cycling and gliding opportunities over the Long Mynd and the South Shropshire hills.

Moorcroft is a delightful detached property situated in the tranquil hamlet of Bushmoor, The property boasts a well-proportioned and layout with ample natural light throughout.





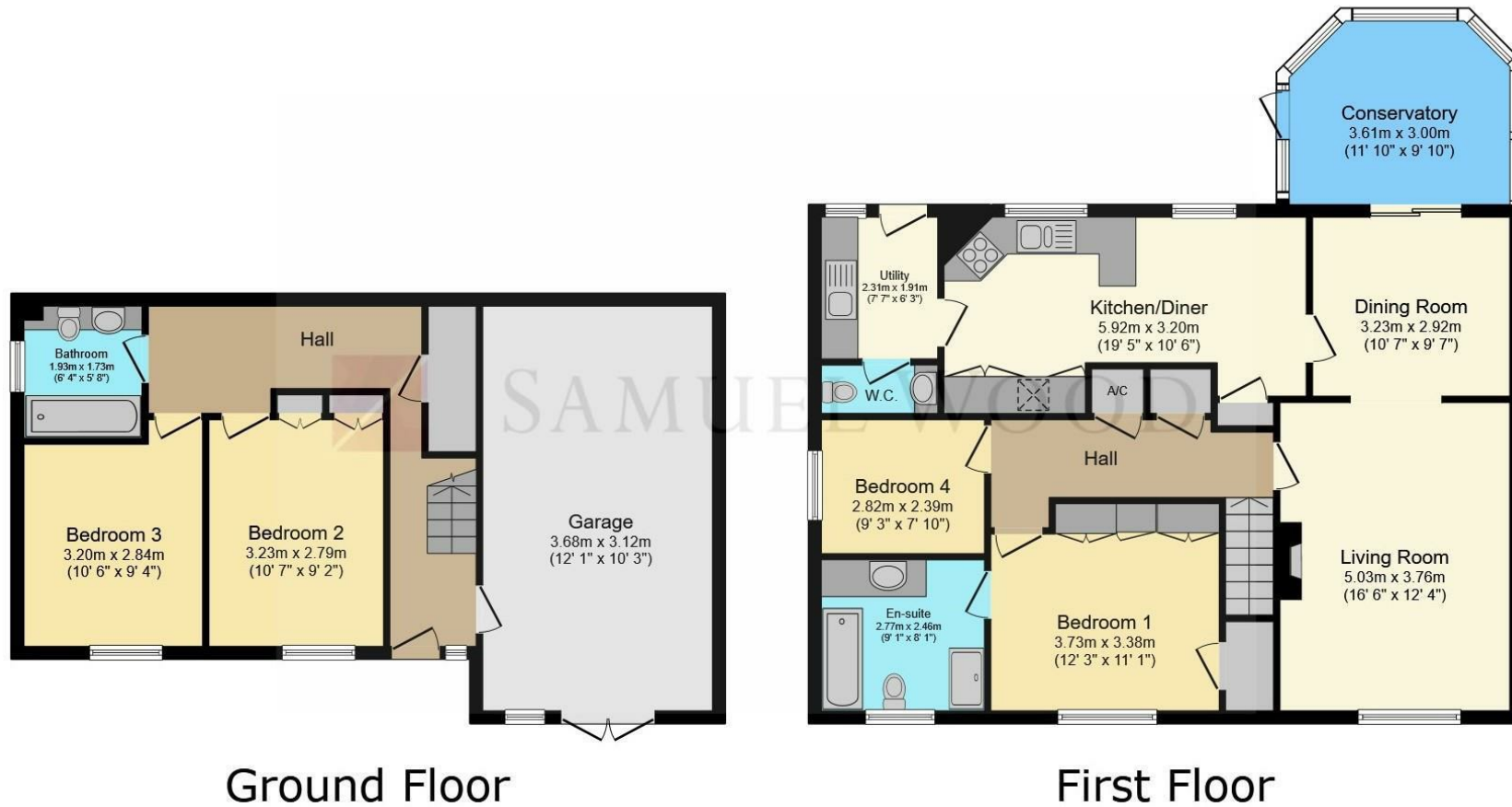


Directions

Bushmoor is 4 miles from Church Stretton, 18 miles from Shrewsbury, and 13 miles from Ludlow. From the Samuel Wood office in Craven Arms, take the 2nd exit onto Shrewsbury Rd/A49. Proceed North for approximately 3 miles, you will pass a layby on the left and continue for a further 200m until you reach another left turn sign posted Bushmoor. After just under a mile, the property will be found on your left hand side identified by a red brick walled driveway.







We take every care in preparing our sales details. They are checked and usually verified by the Vendor. We do not guarantee appliances, alarms, electrical fittings, plumbing, showers etc. You must satisfy yourself that they operate correctly. Room sizes are approximate; they are usually taken in metric and converted to imperial. Do not use them to buy carpets or furniture. We cannot verify the tenure, as we do not have access to the legal title; we cannot guarantee boundaries or rights of way so you must take the advice of your legal representative. No person in the employment of or representing Samuel Wood has any authority to make any representation or warranty whatever in relation to this property. If there is any point which is of particular importance to you, please contact the office and we will be pleased to check the information. Do so particularly if contemplating travelling some distance to view. Applicants are advised that the majority of our shots are taken with a wide angle lens.

CONTEMPORARY AGENCY • TRADITIONAL VALUES
 10 Corvedale Road, Craven Arms, Shropshire, SY7 9ND
 Tel: 01588 672728 | cravenarms@samuelwood.co.uk