



SAMUEL WOOD

8 High Street, Bishops Castle, SY9 5BQ  
Offers In The Region Of £440,000







# 8 High Street

Bishops Castle, SY9 5BQ



- Characterful Period Property
- Double fronted entrance
- Private Courtyard Garden
- Town Centre location
- Modern Well-Appointed Kitchen
- Four Bedrooms & Two Bathrooms
- EPC Rating 'F'

8 High Street in Bishops Castle is a charming and characterful property nestled in the heart of one of Shropshire's most picturesque market towns. This delightful double fronted home offers access through two bespoke oak doors to a perfect blend of traditional features and modern comforts, providing an idyllic living space for families, those seeking a tranquil retreat or as an investment from holiday let or rental. Bishops Castle is renowned for its stunning landscapes, historic architecture, and vibrant community. The area offers a plethora of outdoor activities, charming and very well resourced local pubs, and cultural events throughout the year. Excellent schooling options are within the vicinity, making it an ideal location for families. Easy access to local bus routes, and the nearby A489 provides excellent road connections to surrounding towns and cities.

The interior offers generous living spaces, comprising a welcoming lounge with feature fireplace with wood burning stove inset, atmospheric lighting and hard flooring leading into a charming dining area. A cozy sitting room has a unique blend of period features, including exposed brick inglenook fireplace with wood burning stove inset with window and door to front. A well-appointed modern kitchen / breakfast room designed with comfort and functionality in mind with French doors to the rear patio.

The first floor accommodation has a spacious landing which gives access to the stylish principle bathroom and three further generous sized bedrooms, one with en-suite, each providing a peaceful haven for rest and relaxation.

8 High Street benefits from an enclosed private courtyard garden to the rear, offering an inviting space to unwind or entertain friends and family. Additionally, the High Street location offers the convenience of nearby parking facilities.

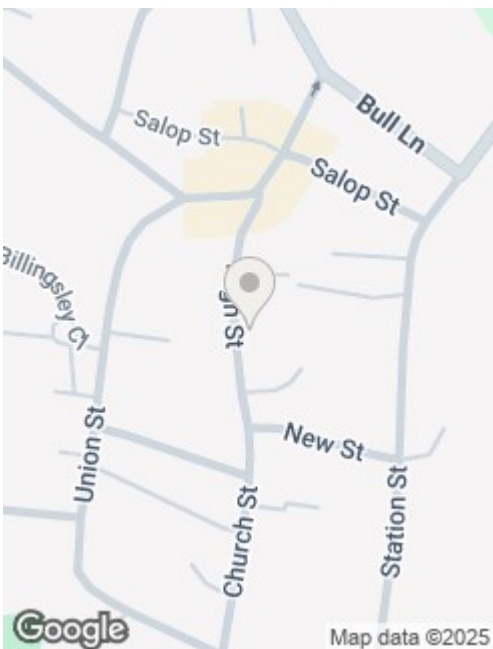
Bishops Castle is renowned for its stunning landscapes, historic architecture, and vibrant community. The area offers a plethora of outdoor activities, charming local pubs, and cultural events throughout the year.











## Directions

Travelling on the A488 to Bishops Castle, turn onto Schoolhouse Lane B4384. Stay on Schoolhouse Lane until you reach a right turn onto Salop Street and continue until you reach a junction, turn left onto Market Square and continue to the High Street. After approximately 50m, the property will be on the left hand side.

Services: We understand that the property has electric storage heating, two wood burning stoves, mains electricity, mains water and private drainage.

Broadband Speed: Basic 18 Mbps, Superfast 80 Mbps

Flood Risk: Very Low.

Tenure: We understand the tenure is Freehold.

Local Authority: Shropshire Council,  
The Shirehall,  
Abbey Foregate,  
Shrewsbury,  
Shropshire  
SY2 6ND.  
Tel 0345 678 9000

Council Tax Band: B

Mortgage Services: We offer a no obligation mortgage service through Hilltop Mortgage Solutions, please ask a member of our team for further details.

Referral Services: Samuel Wood routinely refers vendors and purchasers to providers of conveyancing and financial services. We may receive fees from them as declared in our Referral Fees Disclosure Form.

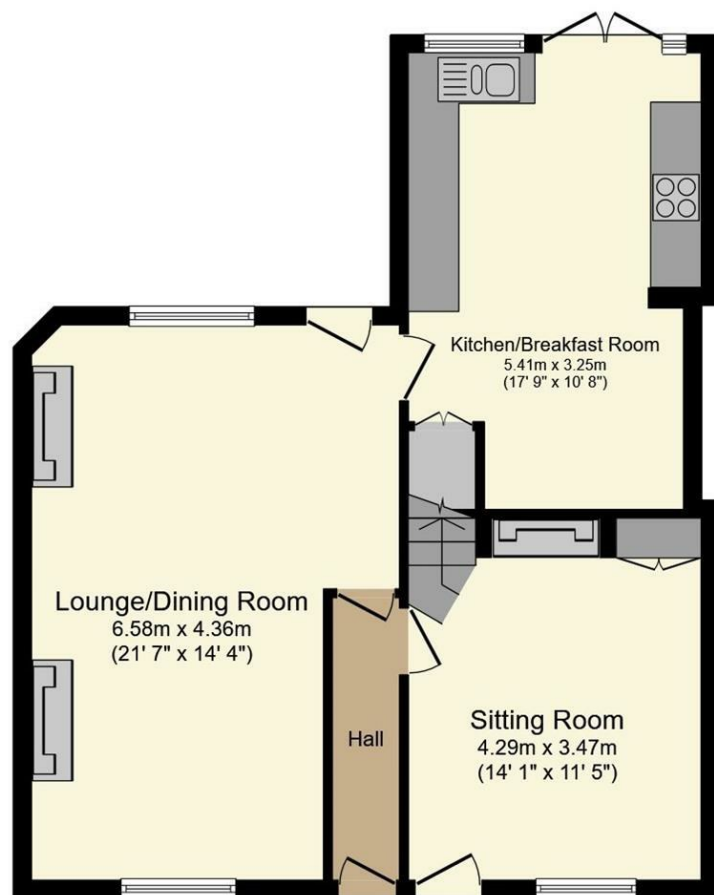




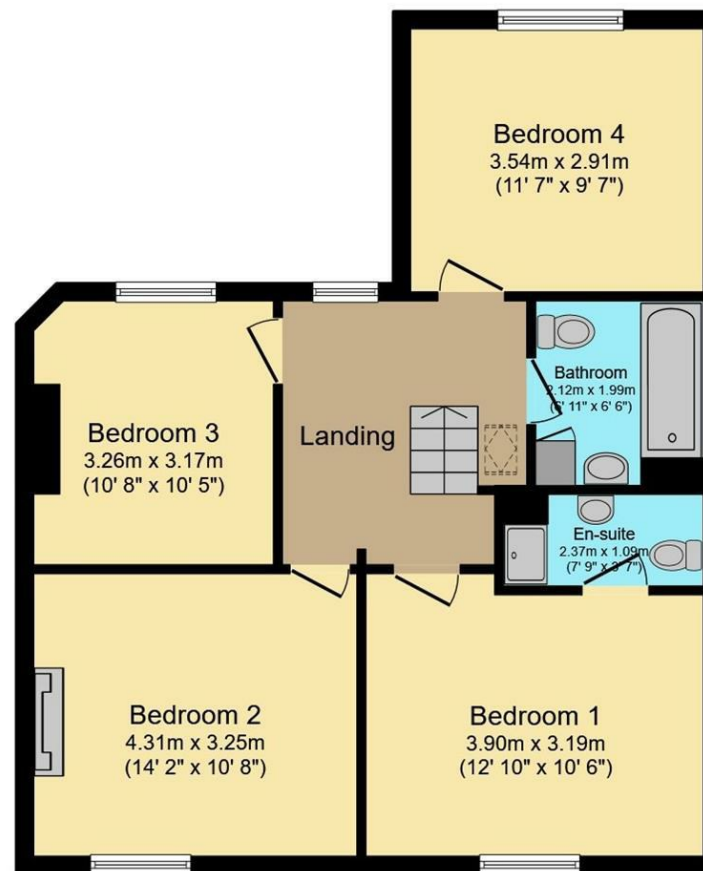








**Ground Floor**



**First Floor**

We take every care in preparing our sales details. They are checked and usually verified by the Vendor. We do not guarantee appliances, alarms, electrical fittings, plumbing, showers etc. You must satisfy yourself that they operate correctly. Room sizes are approximate; they are usually taken in metric and converted to imperial. Do not use them to buy carpets or furniture. We cannot verify the tenure, as we do not have access to the legal title; we cannot guarantee boundaries or rights of way so you must take the advice of your legal representative. No person in the employment of or representing Samuel Wood has any authority to make any representation or warranty whatever in relation to this property. If there is any point which is of particular importance to you, please contact the office and we will be pleased to check the information. Do so particularly if contemplating travelling some distance to view. Applicants are advised that the majority of our shots are taken with a wide angle lens.

CONTEMPORARY AGENCY • TRADITIONAL VALUES  
 10 Corvedale Road, Craven Arms, Shropshire, SY7 9ND  
 Tel: 01588 672728 | cravenarms@samuelwood.co.uk