



Bartlams.

---

10 Windsor Gardens, Castlecroft - WV3 8LY  
£269,950





## 10 Windsor Gardens

Castlecroft, Wolverhampton

Offered with no upward chain, this three-bedroom home occupies a generous plot with a large rear garden backing onto the South Staffordshire Railway Walk. With scope for extension (subject to planning), it offers excellent potential for those wishing to create a long-term family residence.

The ground floor is approached via a spacious porch leading into a welcoming entrance hall, with access to both the front living room and the kitchen. The living room is light and inviting, flowing into the rear dining room and through to a conservatory with sliding doors opening onto the garden - an ideal layout for family living and entertaining. The fitted kitchen provides ample cupboard and worktop space and leads out to a side carport, which in turn gives access to the garage, offering excellent storage and flexibility.

Upstairs, there are three well-proportioned bedrooms, each with fitted wardrobes. The third bedroom includes a cleverly designed hidden bed built into the wardrobe, while the main bedroom enjoys lovely views across the rear garden and open countryside. A family shower room completes the first floor.



B.





## 10 Windsor Gardens

Castlecroft, Wolverhampton

In a sought-after and convenient location, the property is close to well-regarded primary and secondary schools as well as a range of local amenities. For outdoor enthusiasts, both the Railway Walk and the Staffordshire & Worcestershire Canal are within easy reach, providing scenic routes for walking, cycling, and recreation.

Please note: Fixtures and fittings are negotiable, if desired.

- OFFERED WITH NO UPWARD CHAIN
- OPEN PLAN LIVING/DINING ROOM
- KITCHEN AND UPDATED BATHROOM
- DOUBLE GLAZING AND CENTRAL HEATING
- OFF ROAD PARKING, CARPORT AND GARAGE
- LARGE LAWNED REAR GARDEN WITH COUNTRYSIDE VIEWS
- LOCATED CLOSE TO LOCAL AMENITIES AND GOOD PRIMARY AND SECONDARY SCHOOLING
- IDEAL FIRST TIME PURCHASE



B.





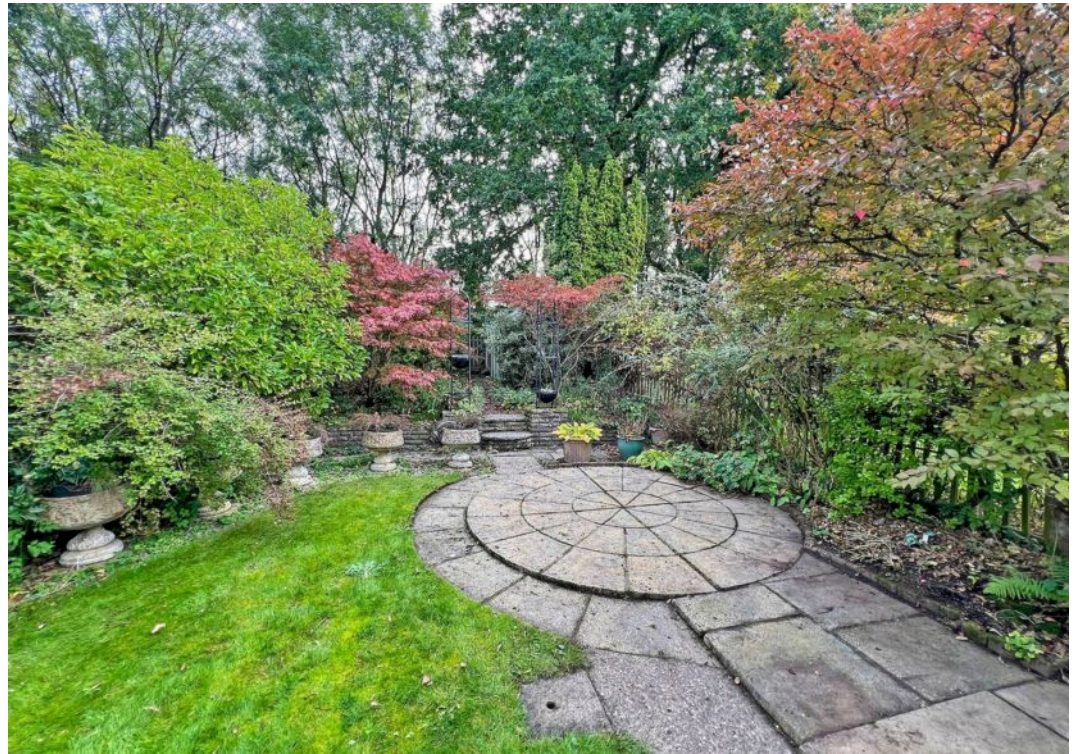












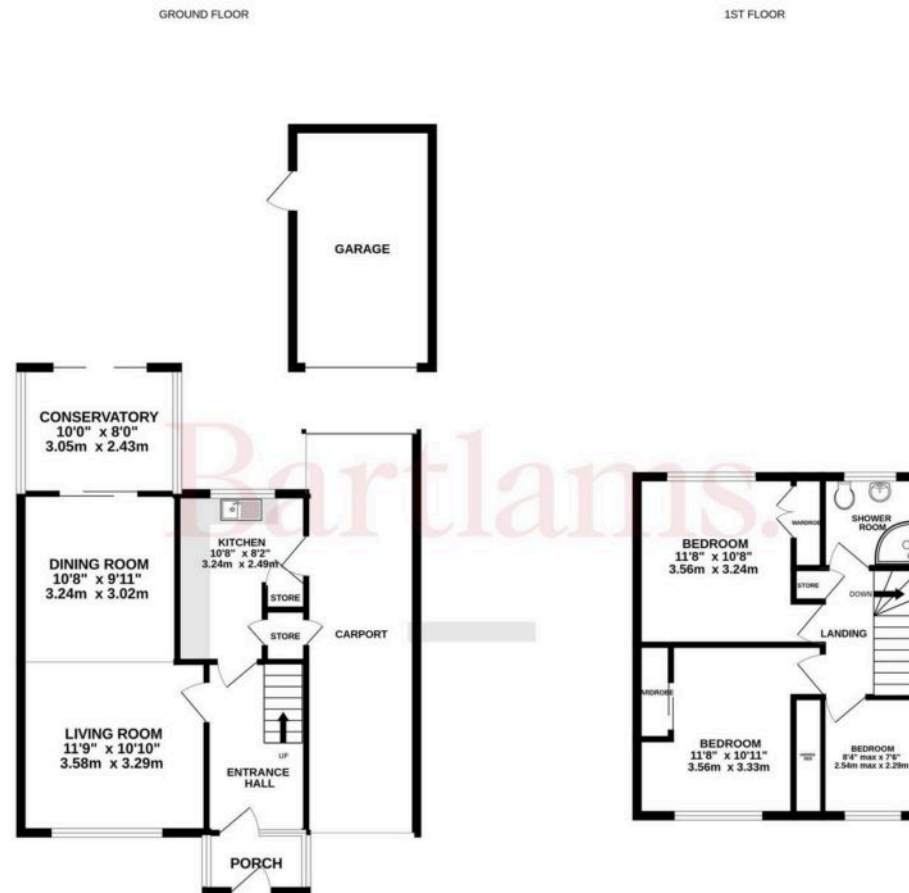












Whilst every attempt has been made to ensure the accuracy of the floorplan contained here, measurements of doors, windows, rooms and any other items are approximate and no responsibility is taken for any error, omission or mis-statement. This plan is for illustrative purposes only and should be used as such by any prospective purchaser. The services, systems and appliances shown have not been tested and no guarantee as to their operability or efficiency can be given.  
Made with Metropex ©2025

# Bartlams Tettenhall

Bartlams, 24 High Street - WV6 8QT

01902 759888

tettenhall@bartlams.co.uk

www.bartlams.co.uk/

NOTICE: These particulars, although believed to be correct, do not constitute any part of an offer or contract. All statements contained in these particulars as to this property are made without responsibility and are not to be relied upon as statements or representations of warranty whatsoever in relation to property. Any intending purchaser must satisfy themselves by inspection or otherwise as to the correctness each of the statements contained in these particulars. All measurements are approximate and for illustrative purposes only.

Photographs are produced for general information and it must not be inferred that any item shown is included in the sale. DISCLOSURE: As a professional Estate Agency our clients employ us to look after their best interests. This includes providing them with full details of offers made to purchase their property. To ensure our obligations to our clients are met we need to check the status of all potential purchasers. If you make an offer on this property we will ask a member of The Finance Family to contact you to verify your status. They are a leading firm of Independent Financial Advisers and Mortgage Brokers. Should they transact any business resulting from our introduction then we may receive a commission.

