



Bartlams.

73 Castlecroft Road, FINCHFIELD WV3 8BS

£375,000



73 Castlecroft Road

Wolverhampton, Wolverhampton

The superb layout of this home includes: A storm porch; hall with under-stair storage; lounge to the front with feature fireplace with decorative surround and a beautifully large bay window allowing plenty of natural light; a stylishly fitted kitchen with a very homely feel, fitted with a wide range of wall and base units, a handful of integrated appliances and plenty of space for a fridge freezer; a dining room seamlessly connecting from the kitchen providing a useful seating area with sliding doors to the rear garden; utility room off the kitchen; guest WC with wash hand basin; garage offering plenty of storage, accessed from the utility or front of the property; four fantastically proportioned bedrooms, three of which being double-bedrooms and the smallest room currently being used for storage; a stylishly designed family bathroom showcasing a bath with shower attachment, WC and wash hand basin; private drive to the front with an established front garden; spectacular south-facing lawned garden to the rear with patio areas and space for outbuildings and even a bar area, making this an ideal for home for those looking for more space in a highly desirable location.



B.



73 Castlecroft Road

Wolverhampton, Wolverhampton

****FAMILY HOME**** Attractive and extended traditional-style four bedroom link-detached family home favourably positioned in much sought after locality with wide selection of amenities within short walking distance and convenient access into Wolverhampton City Centre.

Don't miss out on the opportunity to view. Call our Tettenhall office to book your appointment into this wonderful home!

Freehold

Council Tax Band - D

EPC - tbc

- FOUR BEDROOM LINK-DETACHED FAMILY HOME
- PRIVATE DRIVE
- GARAGE
- TWO RECEPTION ROOMS
- EXTENDED
- IMPRESSIVE SOUTH-FACING REAR GARDEN
- HANDY FOR A RANGE OF AMENITIES IN THE NEAR VICINITY
- FREEHOLD. COUNCIL TAX BAND - D. EPC - TBC

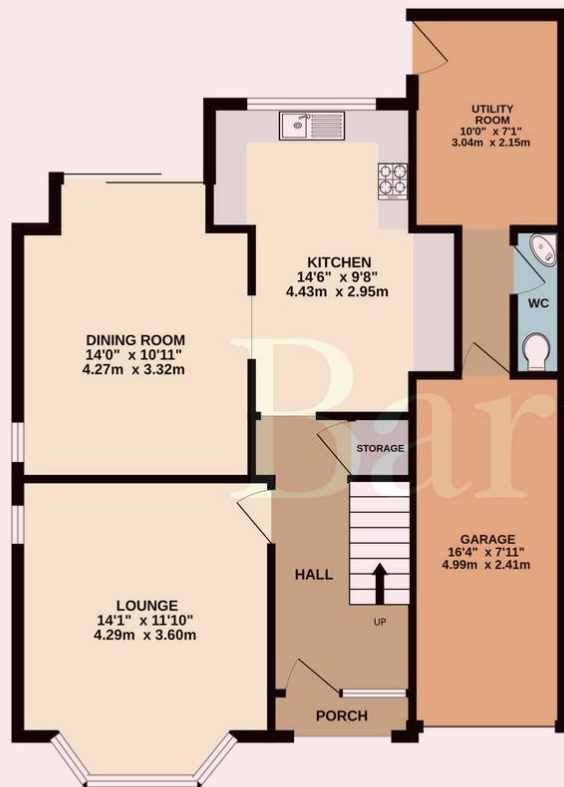


B.

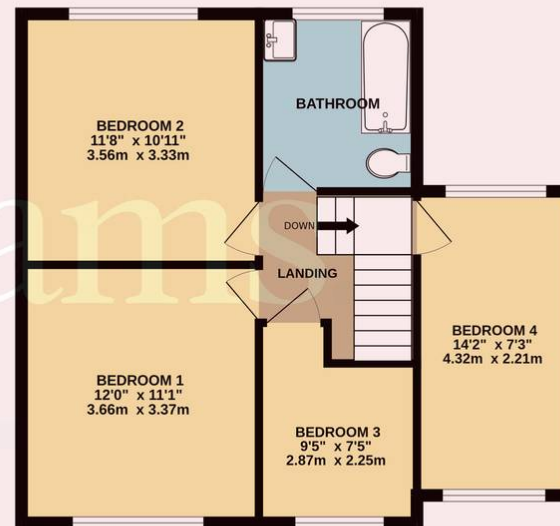




GROUND FLOOR
755 sq.ft. (70.1 sq.m.) approx.



1ST FLOOR
540 sq.ft. (50.1 sq.m.) approx.



TOTAL FLOOR AREA : 1294 sq.ft. (120.2 sq.m.) approx.

Whilst every attempt has been made to ensure the accuracy of the floorplan contained here, measurements of doors, windows, rooms and any other items are approximate and no responsibility is taken for any error, omission or mis-statement. This plan is for illustrative purposes only and should be used as such by any prospective purchaser. The services, systems and appliances shown have not been tested and no guarantee as to their operability or efficiency can be given.
Made with Metropix ©2024

Bartlams Tettenhall

Bartlams, 24 High Street - WV6 8QT

01902 759888

tettenhallsales@bartlams.co.uk

www.bartlams.co.uk/

NOTICE: These particulars, although believed to be correct, do not constitute any part of an offer or contract. All statements contained in these particulars as to this property are made without responsibility and are not to be relied upon as statements or representations of warranty whatsoever in relation to property. Any intending purchaser must satisfy themselves by inspection or otherwise as to the correctness each of the statements contained in these particulars. All measurements are approximate and for illustrative purposes only. Photographs are produced for general information and it must not be inferred that any item shown is included in the sale.

DISCLOSURE: As a professional Estate Agency our clients employ us to look after their best interests. This includes providing them with full details of offers made to purchase their property. To ensure our obligations to our clients are met we need to check the status of all potential purchasers. If you make an offer on this property we will ask a member of The Finance Family to contact you to verify your status. They are a leading firm of Independent Financial Advisers and Mortgage Brokers. Should they transact any business resulting from our introduction then we may receive a commission.

