



Bartlams.

2 Tynningame Avenue, Tettenhall WV6 9PW

£425,000

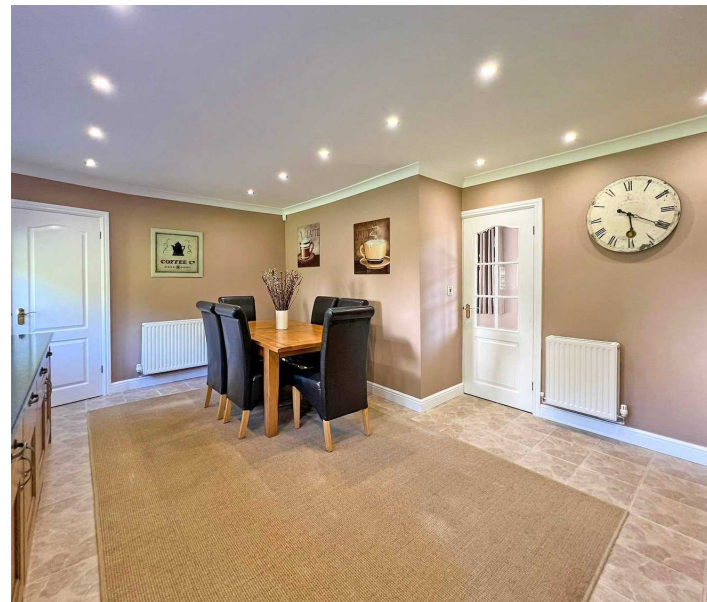


2 Tynninghame Avenue

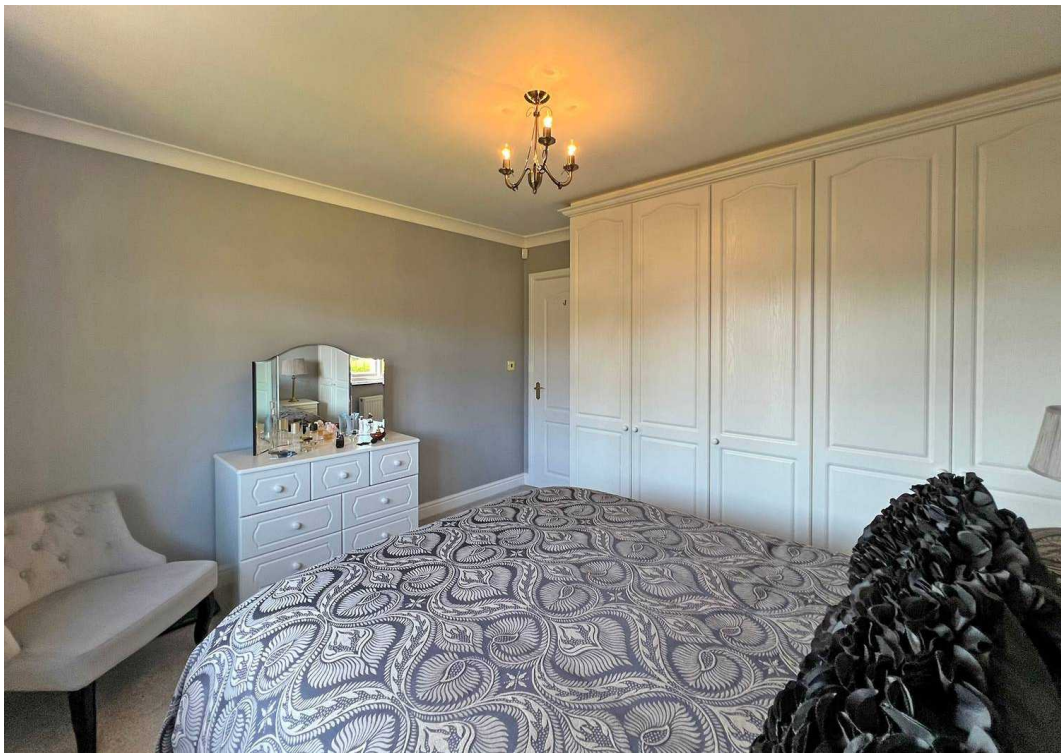
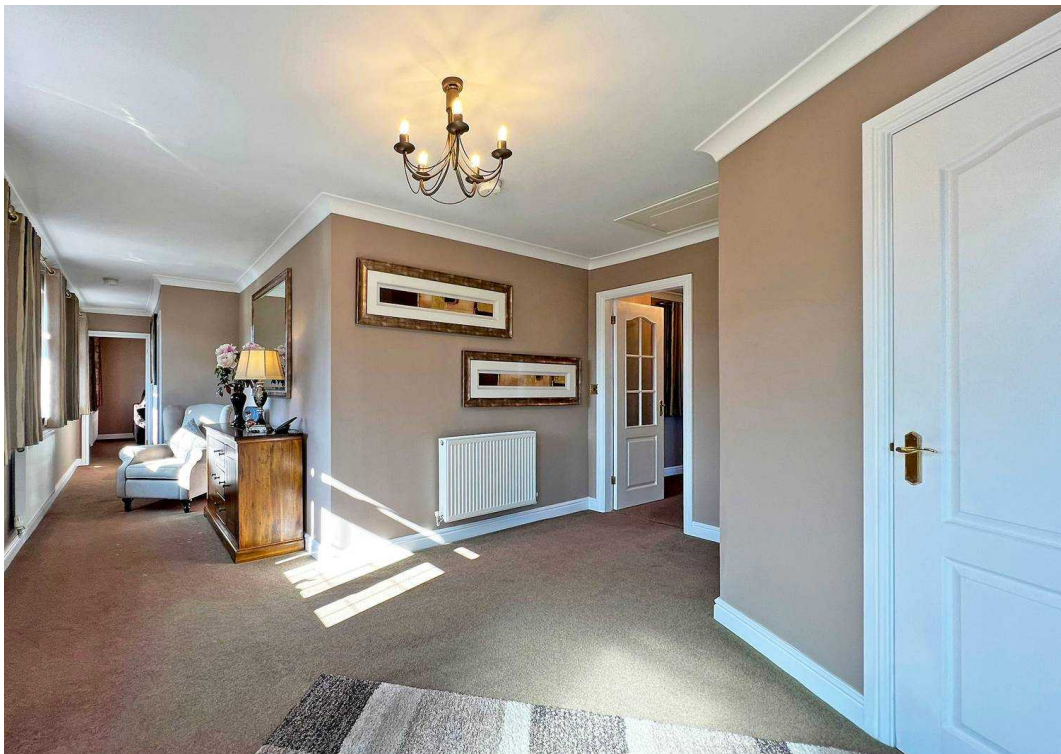
Wolverhampton, Wolverhampton

An absolutely stunning 2 Bedroom Detached Bungalow residence of exceedingly spacious proportions set in an extensive corner plot at the junction of Tynninghame Avenue and Codsall Road within much favoured locality, particularly well served by local amenities.

The interior is superbly appointed and stylishly presented which we are sure will not fail to impress the most discerning purchasers. The layout features: Entrance Porch; large Reception Hall; fitted Guest's Cloakroom; elegant through Lounge; well equipped Dining Kitchen with Rangemaster cooking range and other integrated appliances; Inner Hall leading to Two generous sized Bedrooms, each with fitted wardrobes; and luxuriously equipped Shower Room; Gas CH from a Worcester combination boiler completed by modern uPVC double glazing; rewired in 2011 and Alarm system; Garage with electric roll-over door; Block-paved driveway parking; manicured gardens to front and rear with additional space to side (potential parking/garage space?)



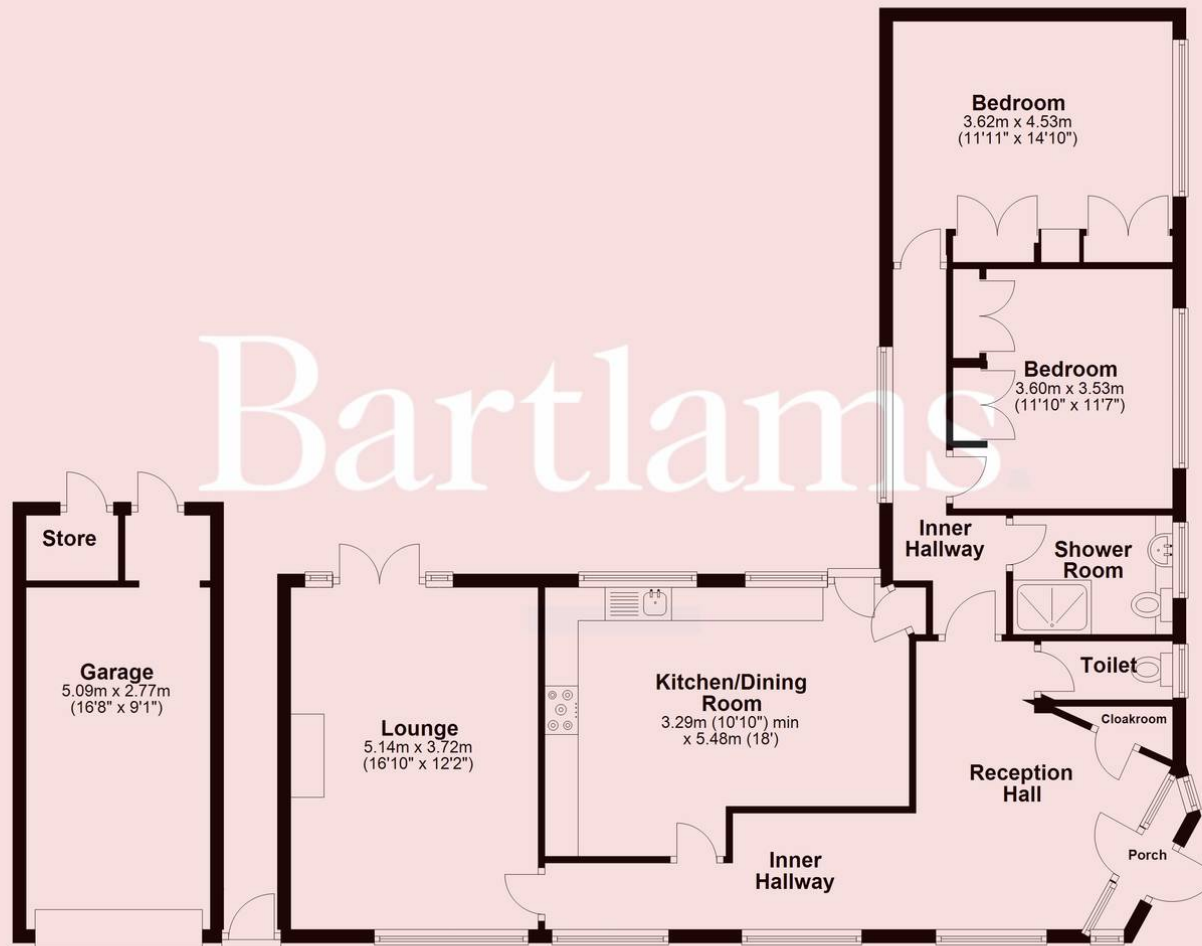
B.





Ground Floor

Approx. 123.4 sq. metres (1328.0 sq. feet)



Total area: approx. 123.4 sq. metres (1328.0 sq. feet)

Floor plan for illustration purposes only - NOT TO SCALE (floor areas approximate only)
Plan produced using PlanUp.

Bartlams Tettenhall

Bartlams, 24 High Street - WV6 8QT

01902 759888

tettenhallsales@bartlams.co.uk

www.bartlams.co.uk/

NOTICE: These particulars, although believed to be correct, do not constitute any part of an offer or contract. All statements contained in these particulars as to this property are made without responsibility and are not to be relied upon as statements or representations of warranty whatsoever in relation to property. Any intending purchaser must satisfy themselves by inspection or otherwise as to the correctness each of the statements contained in these particulars. All measurements are approximate and for illustrative purposes only. Photographs are produced for general information and it must not be inferred that any item shown is included in the sale.

DISCLOSURE: As a professional Estate Agency our clients employ us to look after their best interests. This includes providing them with full details of offers made to purchase their property. To ensure our obligations to our clients are met we need to check the status of all potential purchasers. If you make an offer on this property we will ask a member of The Finance Family to contact you to verify your status. They are a leading firm of Independent Financial Advisers and Mortgage Brokers. Should they transact any business resulting from our introduction then we may receive a commission.

Bartlams

