



Bartlams.

33 Fair Lawn, Albrighton - WV7 3QF
£299,950



33 Fair Lawn

Albrighton, Wolverhampton

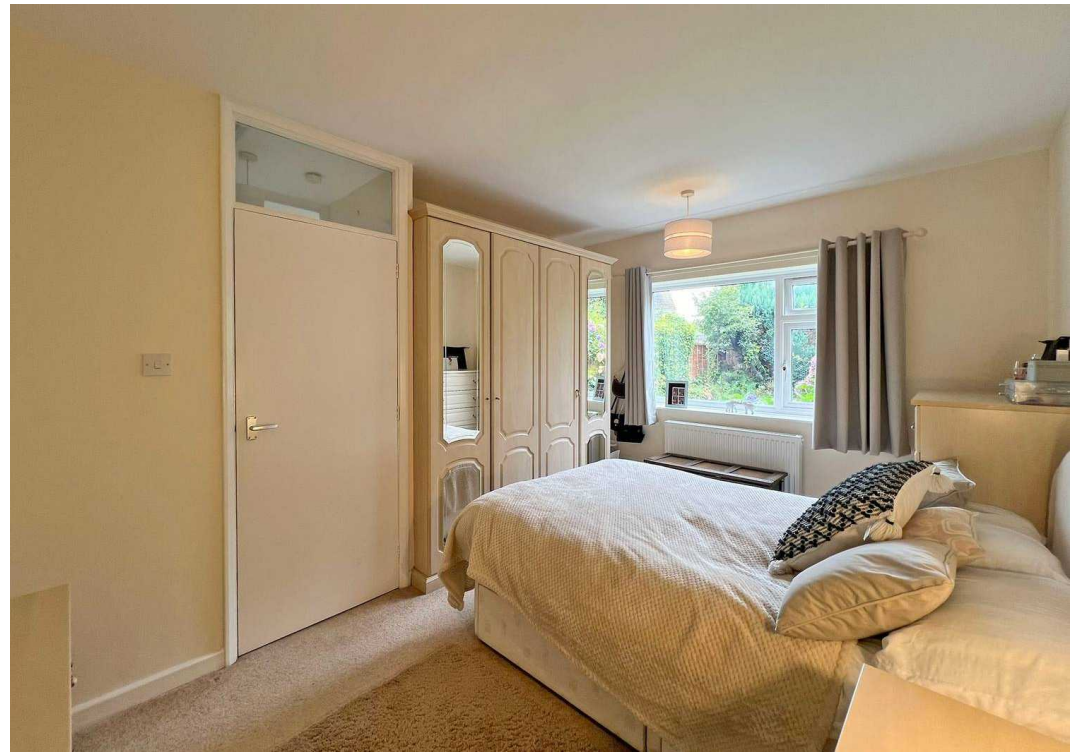
A conveniently situated link-detached bungalow in a highly sought-after cul-de-sac within this charming Shropshire village.

This property is offered with no onward chain and features a welcoming reception porch with a tiled floor, leading into a spacious hallway. The hallway opens to an inviting living room, which boasts a double-glazed front-facing window and a feature fireplace. The fitted kitchen provides ample storage space, while an inner hallway from the living room connects to two bedrooms, both overlooking the rear garden. The bathroom is fitted with a white suite and includes a storage cupboard housing a combi boiler.

Externally, the rear garden features a paved patio and pathway leading to a shaped lawn and flower borders. The front garden is partially lawned, with a driveway offering off-road parking and leading to a garage with an up-and-over door, useful storage cupboard, and sink. The garage also provides access to the rear garden.

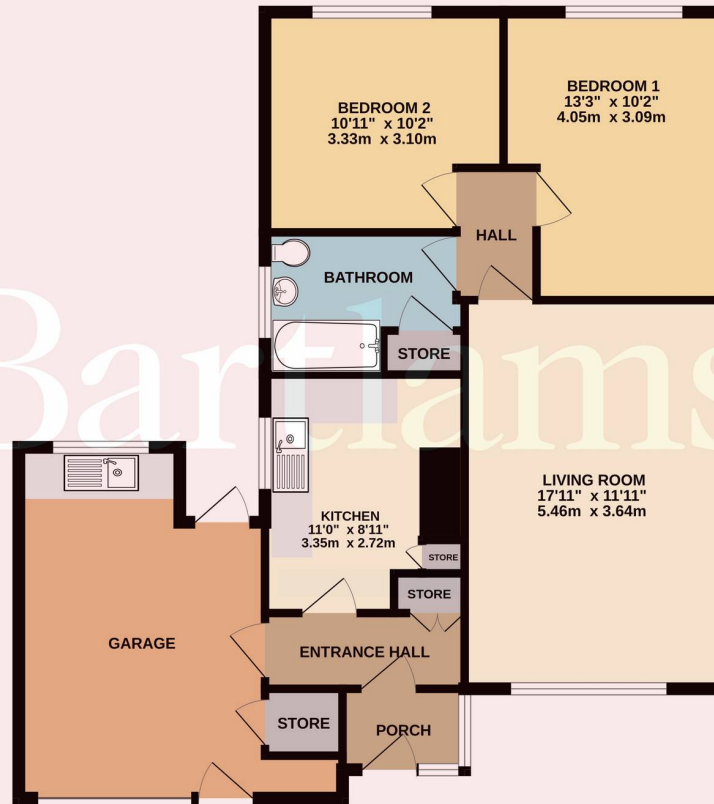
Albrighton is a highly desirable village with a strong sense of community. The village boasts a vibrant High Street with a variety of local shops, independent coffee houses, pubs, and restaurants catering to all tastes. Excellent transport links, including a local railway station and nearby M54 junction, make Albrighton a convenient and delightful place to live.







GROUND FLOOR



Whilst every attempt has been made to ensure the accuracy of the floorplan contained here, measurements of doors, windows, rooms and any other items are approximate and no responsibility is taken for any error, omission or mis-statement. This plan is for illustrative purposes only and should be used as such by any prospective purchaser. The services, systems and appliances shown have not been tested and no guarantee as to their operability or efficiency can be given.
Made with Metropix v2024.

Bartlams Tettenhall

Bartlams, 24 High Street - WV6 8QT

01902 759888

tettenhallsales@bartlams.co.uk

www.bartlams.co.uk/

NOTICE: These particulars, although believed to be correct, do not constitute any part of an offer or contract. All statements contained in these particulars as to this property are made without responsibility and are not to be relied upon as statements or representations of warranty whatsoever in relation to property. Any intending purchaser must satisfy themselves by inspection or otherwise as to the correctness each of the statements contained in these particulars. All measurements are approximate and for illustrative purposes only. Photographs are produced for general information and it must not be inferred that any item shown is included in the sale.

DISCLOSURE: As a professional Estate Agency our clients employ us to look after their best interests. This includes providing them with full details of offers made to purchase their property. To ensure our obligations to our clients are met we need to check the status of all potential purchasers. If you make an offer on this property we will ask a member of The Finance Family to contact you to verify your status. They are a leading firm of Independent Financial Advisers and Mortgage Brokers. Should they transact any business resulting from our introduction then we may receive a commission.

