



Bartlams.

---

1B The Spinney, Finchfield WV3 9HE

£415,000



## 1B The Spinney

Wolverhampton, Wolverhampton

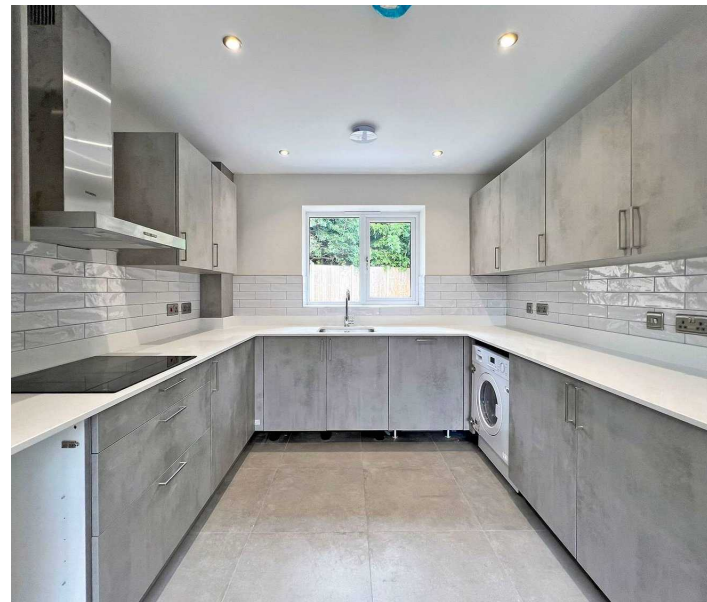
This newly constructed three-bedroom detached dormer bungalow is now ready to view! The property boasts a well-maintained tarmac off-road parking area with block-paved edging, complemented by a manicured lawn garden at the front, creating an inviting first impression.

Inside, the ground floor features a spacious double bedroom complete with built-in wardrobes, offering ample storage. The heart of the home is the expansive kitchen/diner, equipped with modern built-in appliances, perfect for both family meals and entertaining guests. Adjacent to the kitchen/diner is a rear living room space, which opens up to the rear garden through elegant bi-folding doors, providing a seamless indoor-outdoor living experience.

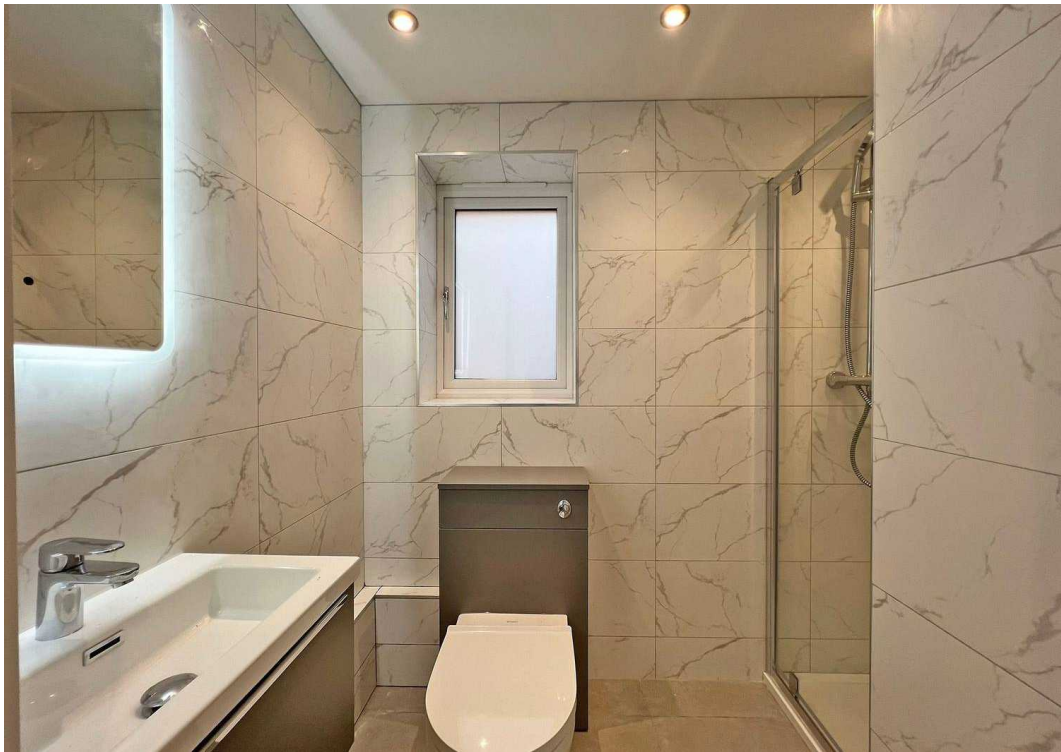
Additionally, there is a convenient downstairs shower room.

The first floor comprises two generously sized double bedrooms, each offering comfort and style. A standout feature is the exceptional upstairs shower room, designed with contemporary fittings and finishes.

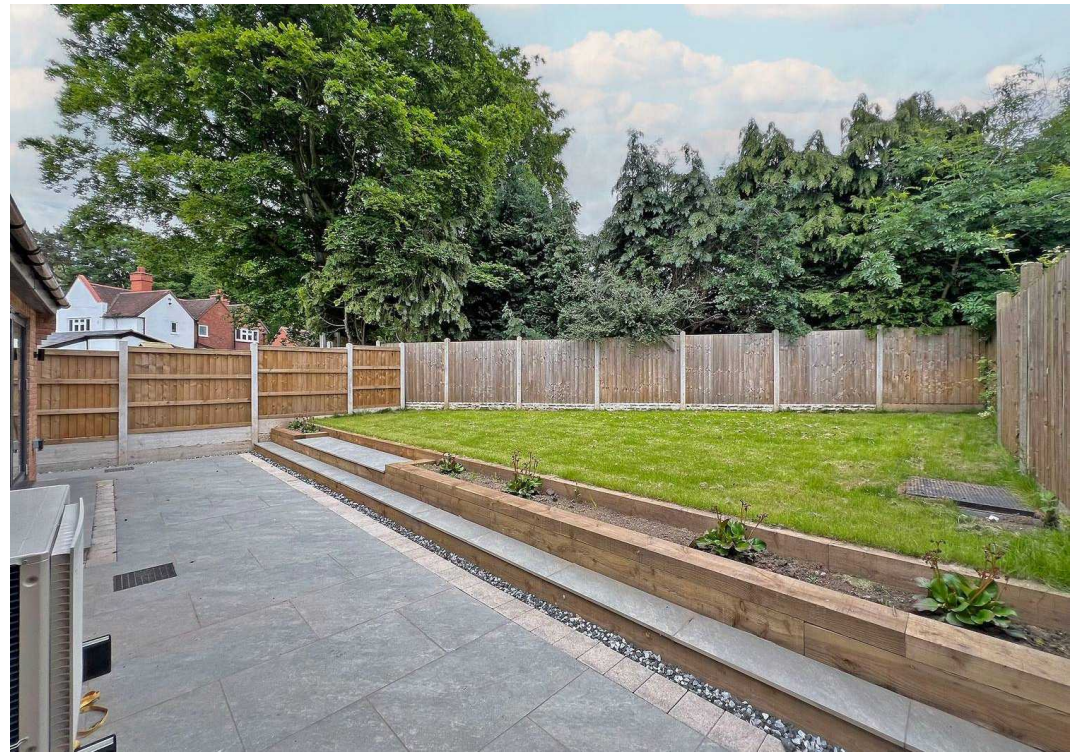
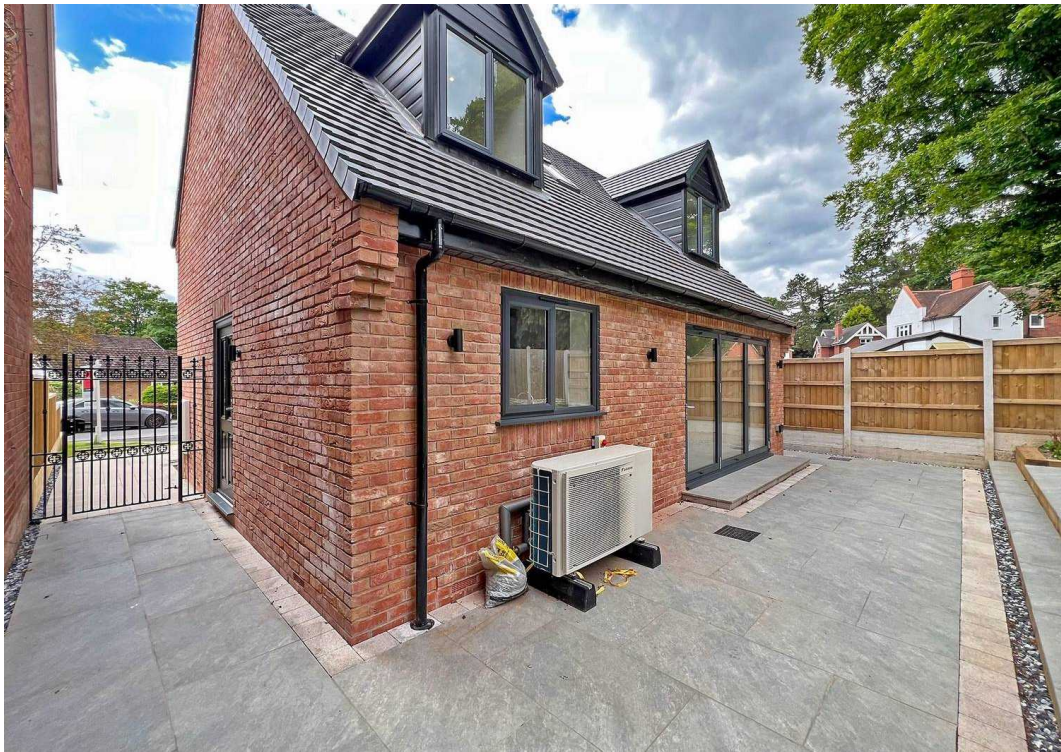
The property also includes an enclosed rear garden with a lawn garden, ideal for outdoor activities and relaxation. High-quality double glazing throughout ensures energy efficiency, while the heat source pump central heating system provides sustainable and cost-effective warmth.



B.







GROUND FLOOR



1ST FLOOR



Whilst every attempt has been made to ensure the accuracy of the floorplan contained here, measurements of doors, windows, rooms and any other items are approximate and no responsibility is taken for any error, omission or mis-statement. This plan is for illustrative purposes only and should be used as such by any prospective purchaser. The services, systems and appliances shown have not been tested and no guarantee as to their operability or efficiency can be given.  
Made with Metropix ©2024

## Bartlams Tettenhall

Bartlams, 24 High Street - WV6 8QT

01902 759888

tettenhallsales@bartlams.co.uk

www.bartlams.co.uk/

NOTICE: These particulars, although believed to be correct, do not constitute any part of an offer or contract. All statements contained in these particulars as to this property are made without responsibility and are not to be relied upon as statements or representations of warranty whatsoever in relation to property. Any intending purchaser must satisfy themselves by inspection or otherwise as to the correctness each of the statements contained in these particulars. All measurements are approximate and for illustrative purposes only. Photographs are produced for general information and it must not be inferred that any item shown is included in the sale.

DISCLOSURE: As a professional Estate Agency our clients employ us to look after their best interests. This includes providing them with full details of offers made to purchase their property. To ensure our obligations to our clients are met we need to check the status of all potential purchasers. If you make an offer on this property we will ask a member of The Finance Family to contact you to verify your status. They are a leading firm of Independent Financial Advisers and Mortgage Brokers. Should they transact any business resulting from our introduction then we may receive a commission.

