



Bartlams

55 Lower Street, TETTENHALL, WV6 9LW

£495,000

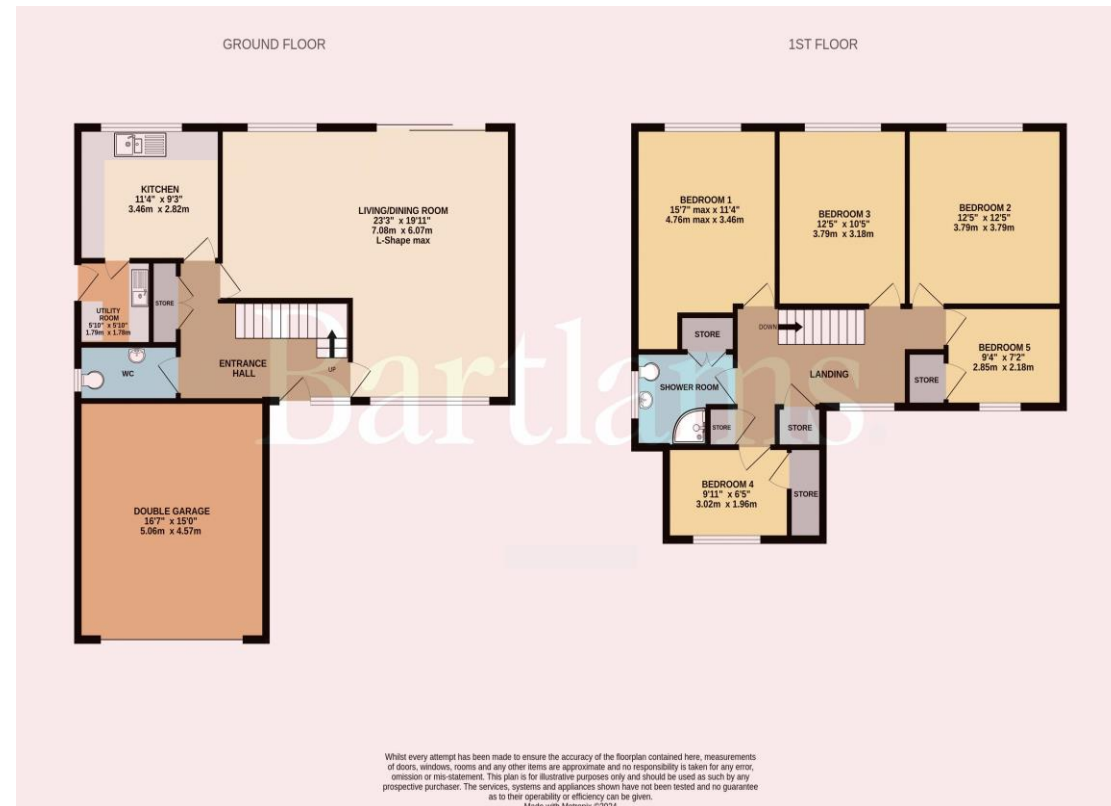
This generously proportioned five-bedroom detached family residence is situated in a popular residential area, conveniently located near local amenities and both primary and secondary schools. The spacious interior offers an excellent opportunity for further enhancement, both in size and value.

A roomy entrance porch with a downstairs W.C. leads into a large L-shaped living room (23ft x 19'11ft) with a sliding door opening to the rear garden. The well-sized breakfast kitchen is complemented by an adjacent utility room, providing side access to the front and rear of the property. The first floor comprises five bedrooms, including three large doubles, two additional bedrooms, and a family shower room. The property benefits from double glazing and central heating throughout.

Outside, the rear garden features an enclosed lawn with a patio area and mature borders. The front of the property offers an extensive driveway, providing ample parking space and turning space plus access to a double garage.

The location is a key highlight, with the property being close to Lower Green, a lovely green space perfect for outdoor activities. Additionally, the area offers beautiful walking routes via Smestow Valley Railway and the nearby canal, ideal for nature lovers and those who enjoy scenic walks.

This property is perfect for a family looking to settle in a thriving community with convenient access to schools, amenities, and attractive outdoor spaces.



Freehold
COUNCIL TAX BAND - E
EPC RATING -

NOTICE: These particulars, although believed to be correct, do not constitute any part of an offer or contract. All statements contained in these particulars as to this property are made without responsibility and are not to be relied upon as statements or representations of warranty whatsoever in relation to property. Any intending purchaser must satisfy themselves by inspection or otherwise as to the correctness each of the statements contained in these particulars. All measurements are approximate and for illustrative purposes only. Photographs are produced for general information and it must not be inferred that any item shown is included in the sale.

DISCLOSURE: As a professional Estate Agency our clients employ us to look after their best interests. This includes providing them with full details of offers made to purchase their property. To ensure our obligations to our clients are met we need to check the status of all potential purchasers. If you make an offer on this property we will ask a member of The Finance Family to contact you to verify your status. They are a leading firm of Independent Financial Advisers and Mortgage Brokers. Should they transact any business resulting from our introduction then we may receive a commission.



Bartlams



24 High Street
Wolverhampton
West Midlands
WV6 8QT

01902 759888
tettenhallsales@bartlams.co.uk
www.bartlams.co.uk



PLEASE SIGN BELOW TO AGREE THAT THE DETAILS ARE ACCURATE TO THE BEST OF YOUR KNOWLEDGE

SIGNED: DATE:





