



Bartlams

16 West Green, WARSTONES, WV4 4RU

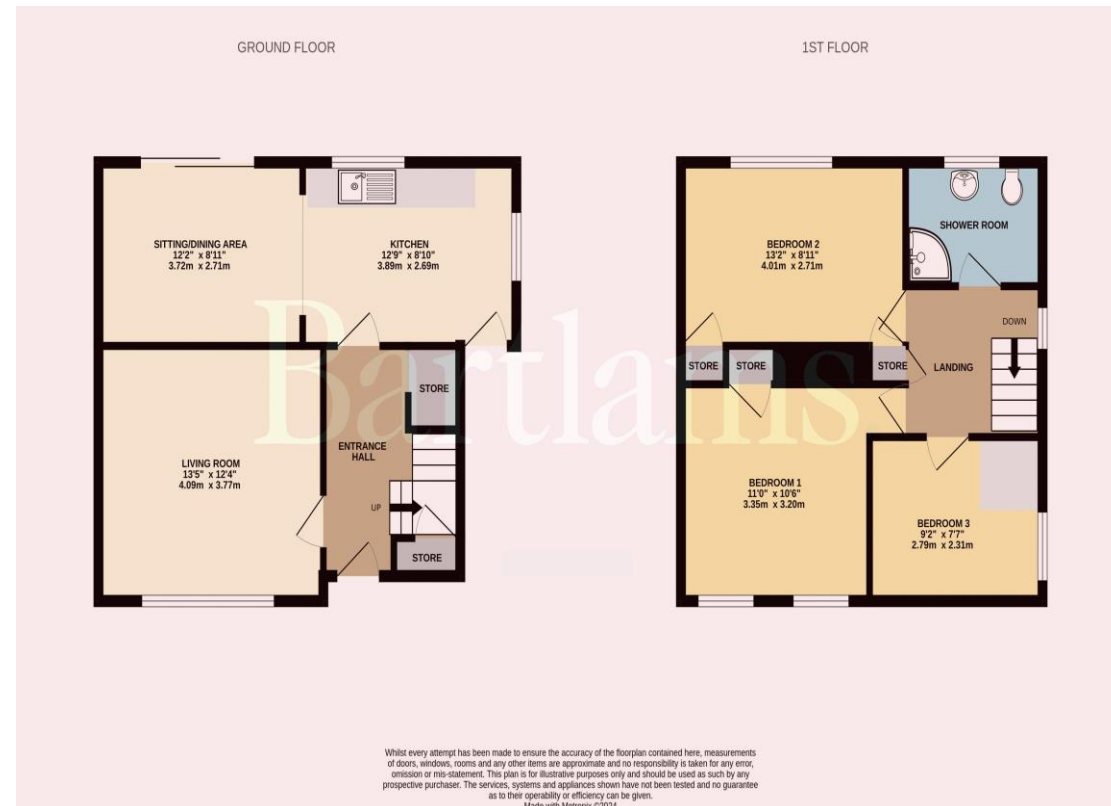
£220,000

This generously proportioned three-bedroom semi-detached home is perfectly situated with easy access to local schools, public transportation networks, and nearby shopping amenities, ensuring a comfortable lifestyle.

Nestled within a peaceful cul-de-sac, the property occupies a substantial corner plot, affording ample space for future expansion, subject to obtaining the requisite planning permissions. The expansive rear garden, a notable feature of this residence, offers vast potential for landscaping or the addition of further structures to complement the existing layout.

The property comprises; a spacious entrance hall, with a door to the living room. Extended kitchen with door to the rear garden and opening into the sitting/dining area. On the first floor are three generously sized bedrooms, offering comfortable accommodation for occupants, along with a convenient modern shower room, catering to the practical needs of everyday living. Double-glazed and central heating with ample off-road parking.

In summary, this property presents a rare opportunity to acquire a spacious and versatile family home in a sought-after location. With its potential for expansion and desirable features, including its prime position and ample outdoor space.



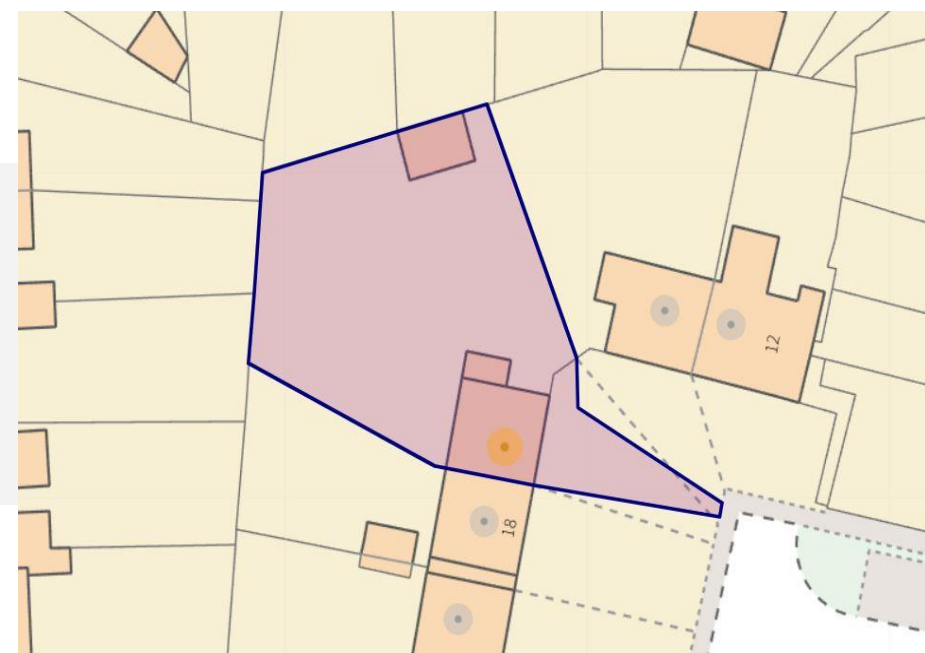
Freehold
COUNCIL TAX BAND - A
EPC RATING -

NOTICE: These particulars, although believed to be correct, do not constitute any part of an offer or contract. All statements contained in these particulars as to this property are made without responsibility and are not to be relied upon as statements or representations of warranty whatsoever in relation to property. Any intending purchaser must satisfy themselves by inspection or otherwise as to the correctness each of the statements contained in these particulars. All measurements are approximate and for illustrative purposes only. Photographs are produced for general information and it must not be inferred that any item shown is included in the sale.

DISCLOSURE: As a professional Estate Agency our clients employ us to look after their best interests. This includes providing them with full details of offers made to purchase their property. To ensure our obligations to our clients are met we need to check the status of all potential purchasers. If you make an offer on this property we will ask a member of The Finance Family to contact you to verify your status. They are a leading firm of Independent Financial Advisers and Mortgage Brokers. Should they transact any business resulting from our introduction then we may receive a commission.



Bartlams



24 High Street
Wolverhampton
West Midlands
WV6 8QT

01902 759888
tettenhallsales@bartlams.co.uk
www.bartlams.co.uk



PLEASE SIGN BELOW TO AGREE THAT THE DETAILS ARE ACCURATE TO THE BEST OF YOUR KNOWLEDGE

SIGNED: DATE:



