



Bartlams

Oak Cottage, OAKEN, WV8 2AY

£599,950

This charming, detached period cottage, situated in the quaint village of Oaken just half a mile outside Codsall, presents an impressive blend of character and space.

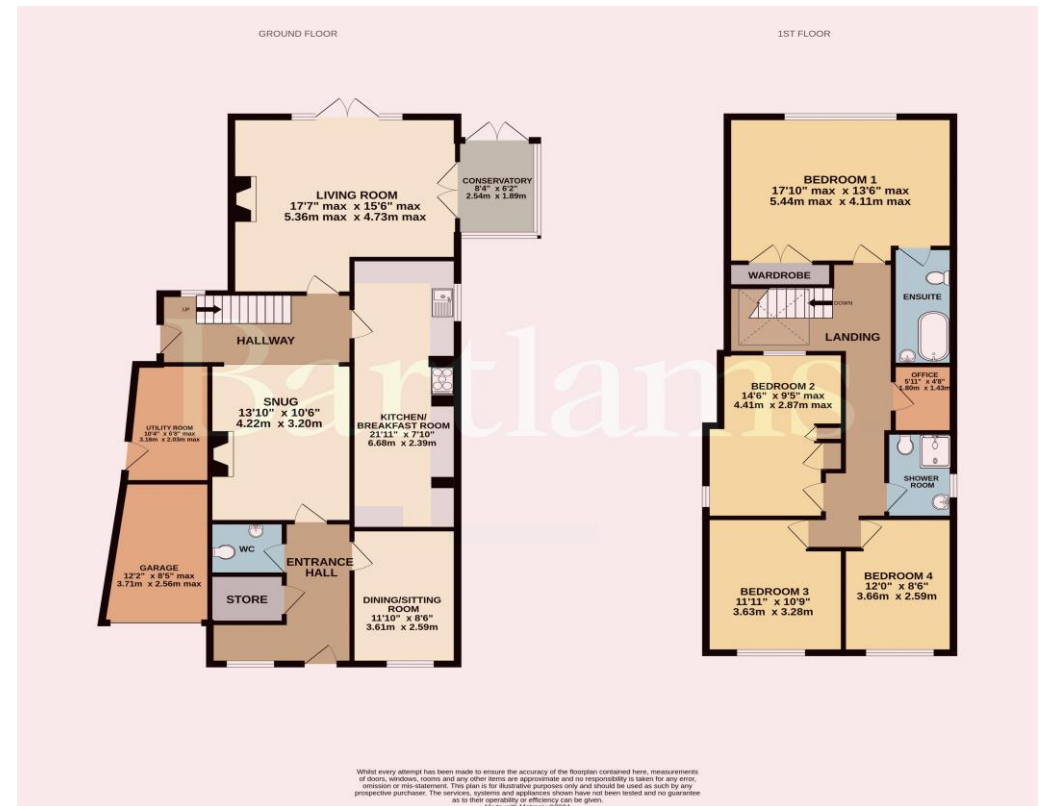
Boasting 4/5 bedrooms, this meticulously renovated former village post office has been lovingly upgraded by its owners over the past three decades. Its prime location offers easy access to Codsall's schools, amenities, and transportation links, including the A5, M6, M54, A41, and A449.

Upon entering, you're greeted by a spacious lounge featuring an inglenook fireplace, a conservatory, and a sizable open plan snug, all adorned with a mix of new, original, and reclaimed oak accents. The contemporary breakfast kitchen is a highlight, while the wide hallway leads to a downstairs WC and a dining room that could serve as a potential fifth bedroom.

Upstairs, the layout has been expanded seamlessly, creating a new galleried landing with a stunning glass roof light. The master bedroom offers generous proportions, garden views, and a stylish ensuite, while the family bathroom and adjacent study complete the upper level. Three additional double bedrooms, provide ample accommodation.

Outside, the mature garden is beautifully landscaped with a sunny patio and an external utility room, complemented by parking space and a single garage.

Overall, this property offers a perfect blend of modern luxury and historic charm, ideal for both family living and commuting convenience.



Freehold
COUNCIL TAX BAND - E
EPC RATING - C

NOTICE: These particulars, although believed to be correct, do not constitute any part of an offer or contract. All statements contained in these particulars as to this property are made without responsibility and are not to be relied upon as statements or representations of warranty whatsoever in relation to property. Any intending purchaser must satisfy themselves by inspection or otherwise as to the correctness each of the statements contained in these particulars. All measurements are approximate and for illustrative purposes only. Photographs are produced for general information and it must not be inferred that any item shown is included in the sale.

DISCLOSURE: As a professional Estate Agency our clients employ us to look after their best interests. This includes providing them with full details of offers made to purchase their property. To ensure our obligations to our clients are met we need to check the status of all potential purchasers. If you make an offer on this property we will ask a member of The Finance Family to contact you to verify your status. They are a leading firm of Independent Financial Advisers and Mortgage Brokers. Should they transact any business resulting from our introduction then we may receive a commission.



Bartlams



24 High Street
 Wolverhampton
 West Midlands
 WV6 8QT

01902 759888
 tettenhallsales@bartlams.co.uk
 www.bartlams.co.uk



PLEASE SIGN BELOW TO AGREE THAT THE DETAILS ARE ACCURATE TO THE BEST OF YOUR KNOWLEDGE

SIGNED: DATE:



