



**Bartlams**

**35 Willow Road, FINCHFIELD, WV3 8AF**

# Offers in the Region Of £370,000

## **\*\*NO UPWARD CHAIN\*\***

**Situated in one of Finchfield's most desirable locations, Willow Road offers easy access to amenities within the area. Nestled off Highlands Road, it provides convenient transportation links to the city centre. Renowned for its excellent schooling options, the neighbourhood also boasts the nearby open space of Bantock Park.**

**This property features generously proportioned accommodation across its ground and first floors. It comprises two spacious reception rooms, a sizable dining kitchen, and utility space.**

**Upstairs, there are three double bedrooms, along with a shower room and a separate W.C. A private garden at the rear complements the property, which also includes a driveway, garage, double glazing, and central heating.**

- NO UPWARD CHAIN.
- POPULAR RESIDENTIAL LOCATION.
  - THREE BEDROOMS.
  - TWO RECEPTION ROOMS.
- FITTED KITCHEN/BREAKFAST ROOM.
- DOUBLE GLAZING AND CENTRAL HEATING.
  - OFF ROAD PARKING .
  - ENCLOSED REAR GARDEN.

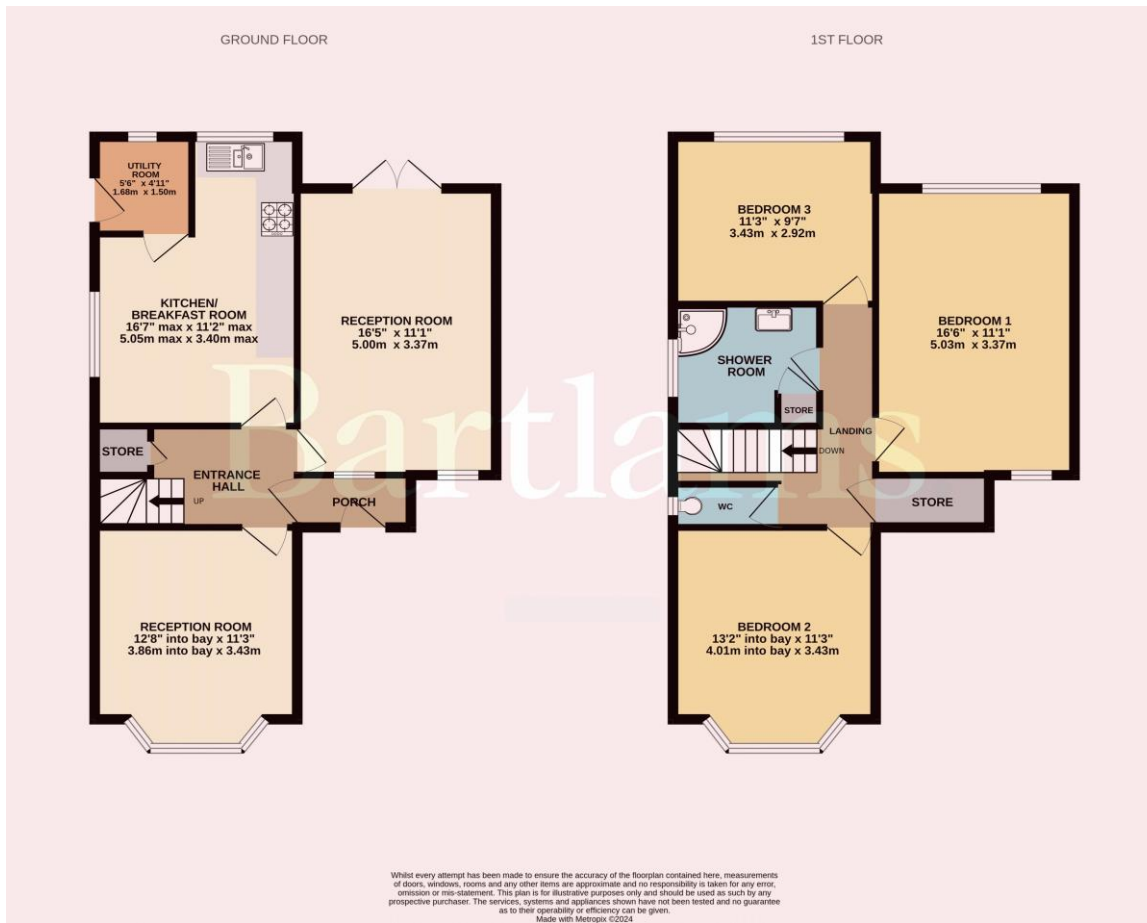


Freehold  
COUNCIL TAX BAND - D  
EPC RATING - D

**NOTICE:** These particulars, although believed to be correct, do not constitute any part of an offer or contract. All statements contained in these particulars as to this property are made without responsibility and are not to be relied upon as statements or representations of warranty whatsoever in relation to property. Any intending purchaser must satisfy themselves by inspection or otherwise as to the correctness each of the statements contained in these particulars. All measurements are approximate and for illustrative purposes only. Photographs are produced for general information and it must not be inferred that any item shown is included in the sale.

**DISCLOSURE:** As a professional Estate Agency our clients employ us to look after their best interests. This includes providing them with full details of offers made to purchase their property. To ensure our obligations to our clients are met we need to check the status of all potential purchasers. If you make an offer on this property we will ask a member of The Finance Family to contact you to verify your status. They are a leading firm of Independent Financial Advisers and Mortgage Brokers. Should they transact any business resulting from our introduction then we may receive a commission.

**Bartlams**



PLEASE SIGN BELOW TO AGREE THAT THE DETAILS ARE ACCURATE TO THE BEST OF YOUR KNOWLEDGE

SIGNED: .....

DATE: .....

24 High Street TETTENHALL Wolverhampton West Midlands WV6 8QT

01902 759888

tettenhallsales@bartlams.co.uk

www.bartlams.co.uk



