



Bartlams

5 Maple Road, BRADMORE, WV3 7JD

Auction Guide Price £80,000

An investment opportunity located within a highly sought after residential area positioned within close proximity to local amenities, schooling and transport links. This property is for sale by the Modern Method of Auction. Should you view, offer or bid on the property, your information will be shared with the Auctioneer, iamsold Limited. This method of auction requires both parties to complete the transaction within 56 days of the draft contract for sale being received by the buyers solicitor. This additional time allows buyers to proceed with mortgage finance (subject to lending criteria, affordability and survey). The buyer is required to sign a reservation agreement and make payment of a non-refundable Reservation Fee. This being 4.5% of the purchase price including VAT, subject to a minimum of £6,600.00 including VAT. The Reservation Fee is paid in addition to purchase price and will be considered as part of the chargeable consideration for the property in the calculation for stamp duty liability. Buyers will be required to go through an identification verification process with iamsold and provide proof of how the purchase would be funded. This property has a Buyer Information Pack which is a collection of documents in relation to the property. The documents may not tell you everything you need to know about the property, so you are required to complete your own due diligence before bidding. A sample copy of the Reservation Agreement and terms and conditions are also contained within this pack. The buyer will also make payment of £300 including VAT towards the preparation cost of the pack, where it has been provided by iamsold. The property is subject to an undisclosed Reserve Price with both the Reserve Price and Starting Bid being subject to change.

- NO UPWARD CHAIN.
- FOR SALE BY MODERN METHOD OF AUCTION.
 - BUYERS FEES APPLY.
 - SUBJECT TO RESERVE PRICE.
 - PRICED TO SELL.
- FIXED TIMESCALES FOR EXCHANGE AND COMPLETION.
 - LEASE LENGTH - 49 YEARS.
- GROUND RENT - £35 ANNUALLY. NO SERVICE CHARGE.

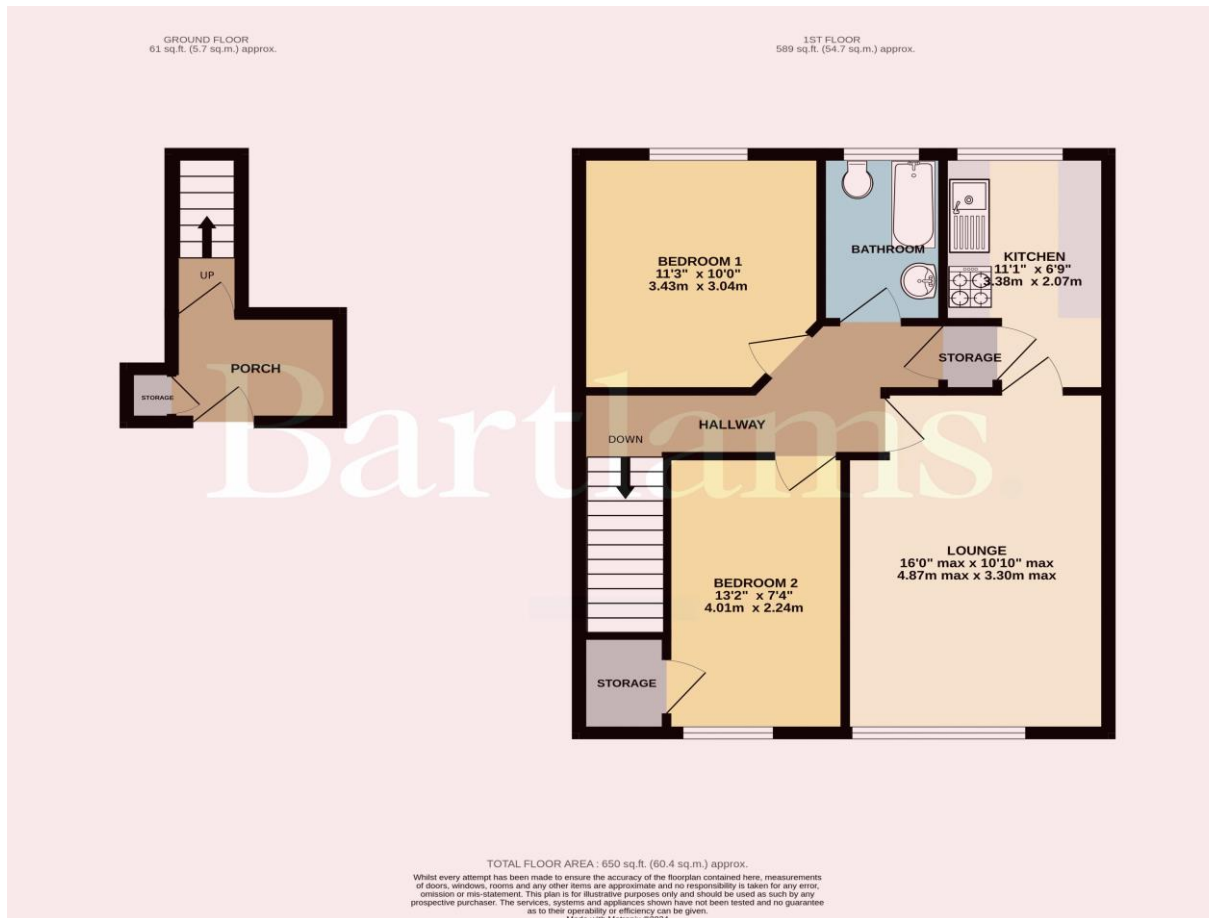


Leasehold - call for further information
COUNCIL TAX BAND - A
EPC RATING - C

NOTICE: These particulars, although believed to be correct, do not constitute any part of an offer or contract. All statements contained in these particulars as to this property are made without responsibility and are not to be relied upon as statements or representations of warranty whatsoever in relation to property. Any intending purchaser must satisfy themselves by inspection or otherwise as to the correctness each of the statements contained in these particulars. All measurements are approximate and for illustrative purposes only. Photographs are produced for general information and it must not be inferred that any item shown is included in the sale.

DISCLOSURE: As a professional Estate Agency our clients employ us to look after their best interests. This includes providing them with full details of offers made to purchase their property. To ensure our obligations to our clients are met we need to check the status of all potential purchasers. If you make an offer on this property we will ask a member of The Finance Family to contact you to verify your status. They are a leading firm of Independent Financial Advisers and Mortgage Brokers. Should they transact any business resulting from our introduction then we may receive a commission.

Bartlams



PLEASE SIGN BELOW TO AGREE THAT THE DETAILS
ARE ACCURATE TO THE BEST OF YOUR KNOWLEDGE

SIGNED:

DATE:

24 High Street TETTENHALL Wolverhampton West Midlands WV6 8QT

01902 759888

tettenhallsales@bartlams.co.uk

www.bartlams.co.uk



