



**Bartlams**

**60 Downie Road, Codsall, WV8 1JE**

# Offers in the Region Of £329,950

**\*\*OFFERED WITH NO UPWARD CHAIN\*\* Extended traditional-style semi-detached family home enjoying a pleasant cul-de-sac position on village outskirts. Spacious accommodation nicely presented with particularly well-appointed specifications. Off-road parking to the fore, garage with electric door, porch, entrance hall, living room with an opening into the dining area, doors to the sunroom and exceptional breakfast kitchen and downstairs W.C. On the first floor are four good-sized bedrooms and a family bathroom. Double Glazing and Central Heating. Enclosed lawn rear garden with patio area and two large sheds with up and over doors.**

- NO UPWARD CHAIN.
- EXTENDED FOUR BEDROOM FAMILY HOME.
  - THROUGH LIVING / DINING ROOM.
  - FITTED KITCHEN WITH BREAKFAST AREA.
- FAMILY BATHROOM AND DOWNSTAIRS W.C..
- DOUBLE GLAZING AND CENTRAL HEATING.
  - POPULAR CUL-DE-SAC LOCATION.
  - OFF ROAD PARKING AND GARAGE.

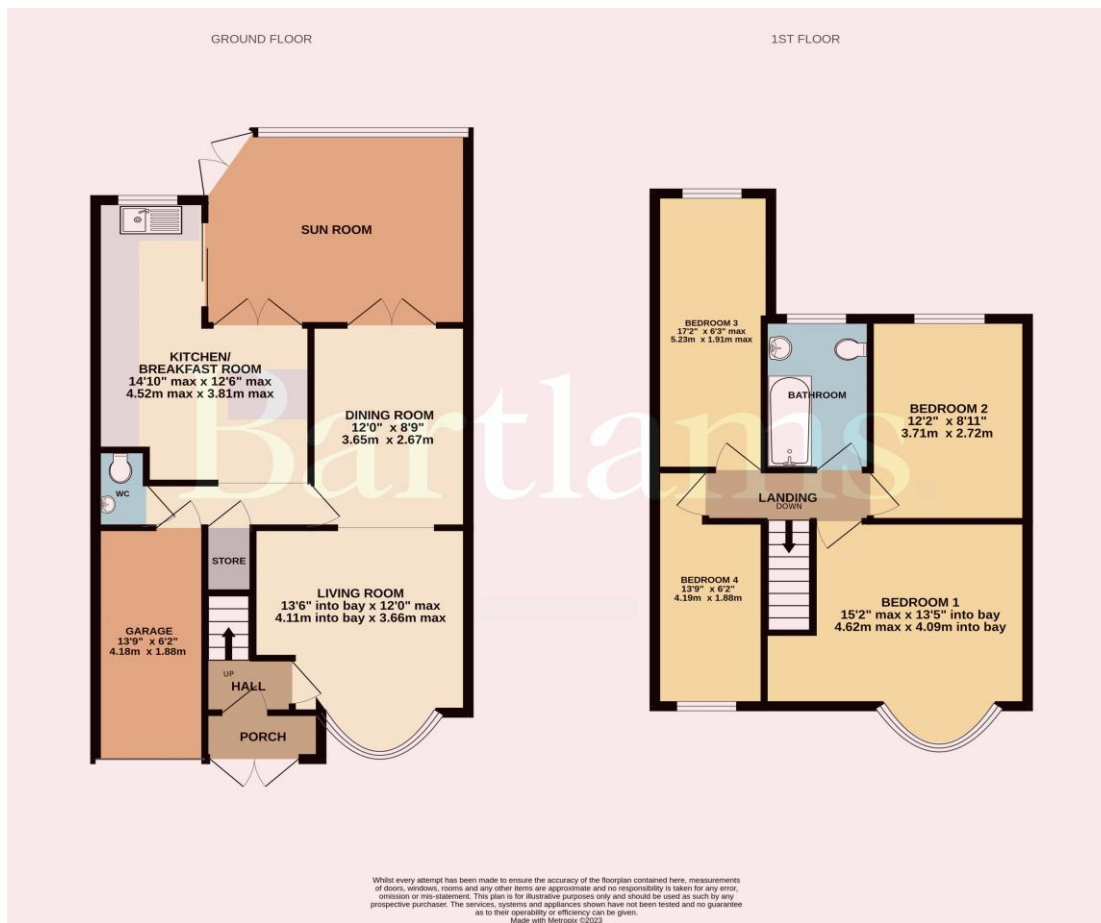


Freehold  
COUNCIL TAX BAND - C  
EPC RATING - D

**NOTICE:** These particulars, although believed to be correct, do not constitute any part of an offer or contract. All statements contained in these particulars as to this property are made without responsibility and are not to be relied upon as statements or representations of warranty whatsoever in relation to property. Any intending purchaser must satisfy themselves by inspection or otherwise as to the correctness each of the statements contained in these particulars. All measurements are approximate and for illustrative purposes only. Photographs are produced for general information and it must not be inferred that any item shown is included in the sale.

**DISCLOSURE:** As a professional Estate Agency our clients employ us to look after their best interests. This includes providing them with full details of offers made to purchase their property. To ensure our obligations to our clients are met we need to check the status of all potential purchasers. If you make an offer on this property we will ask a member of The Finance Family to contact you to verify your status. They are a leading firm of Independent Financial Advisers and Mortgage Brokers. Should they transact any business resulting from our introduction then we may receive a commission.

**Bartlams**



PLEASE SIGN BELOW TO AGREE THAT THE DETAILS ARE ACCURATE TO THE BEST OF YOUR KNOWLEDGE

SIGNED: .....

DATE: .....

24 High Street TETTENHALL Wolverhampton West Midlands WV6 8QT

01902 759888

tettenhallsales@bartlams.co.uk

www.bartlams.co.uk



