



Bartlams

25 Madeira Avenue, Codsall, WV8 2DS

£309,950

Extended traditional-style semi occupying a particularly pleasant position in a select cul-de-sac on the village outskirts but handily placed to access excellent local amenities. Attractively presented accommodation with an especially comfortable standard of appointment. Entrance Hall. Through Living Room with defined Sitting and Dining Areas. Spacious Breakfast Kitchen with a fine range of fittings and integrated appliances. Three Bedrooms. Bathroom. Gas-boiler central heating. Double-glazed windows. Garage and forecourt parking facilities. Neatly landscaped gardens.

- EXTENDED FAMILY HOME.
- CUL-DE-SAC LOCATION.
 - THREE BEDROOMS.
- THROUGH LOUNGE/DINER.
- KITCHEN/BREAKFAST ROOM.
- DOUBLE GLAZING AND CENTRAL HEATING.
- BEAUTIFUL LANDSCAPED GARDEN.
- BLOCK PAVED OFF ROAD PARKING.

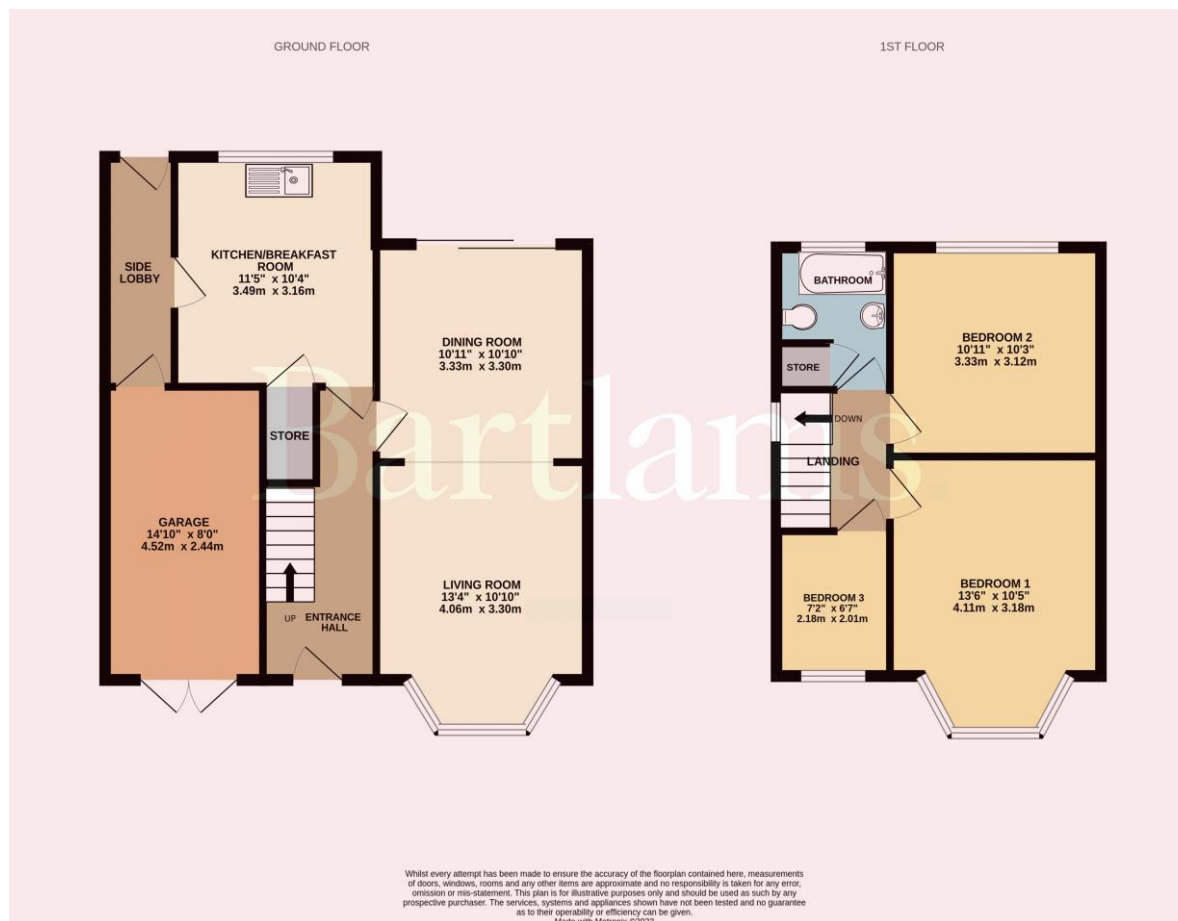


Freehold
COUNCIL TAX BAND - C
EPC RATING - C

NOTICE: These particulars, although believed to be correct, do not constitute any part of an offer or contract. All statements contained in these particulars as to this property are made without responsibility and are not to be relied upon as statements or representations of warranty whatsoever in relation to property. Any intending purchaser must satisfy themselves by inspection or otherwise as to the correctness each of the statements contained in these particulars. All measurements are approximate and for illustrative purposes only. Photographs are produced for general information and it must not be inferred that any item shown is included in the sale.

DISCLOSURE: As a professional Estate Agency our clients employ us to look after their best interests. This includes providing them with full details of offers made to purchase their property. To ensure our obligations to our clients are met we need to check the status of all potential purchasers. If you make an offer on this property we will ask a member of The Finance Family to contact you to verify your status. They are a leading firm of Independent Financial Advisers and Mortgage Brokers. Should they transact any business resulting from our introduction then we may receive a commission.

Bartlams



PLEASE SIGN BELOW TO AGREE THAT THE DETAILS ARE ACCURATE TO THE BEST OF YOUR KNOWLEDGE

SIGNED:

DATE:

24 High Street TETTENHALL Wolverhampton West Midlands WV6 8QT

01902 759888

tettenhallsales@bartlams.co.uk

www.bartlams.co.uk



