



Concanon Road, SW2

£625,000

 2  2  1  C

- Two Double Bedrooms
- Two Bathrooms
- Chain Free
- Share Of Freehold
- Over 750 Sqft
- Close To Transport





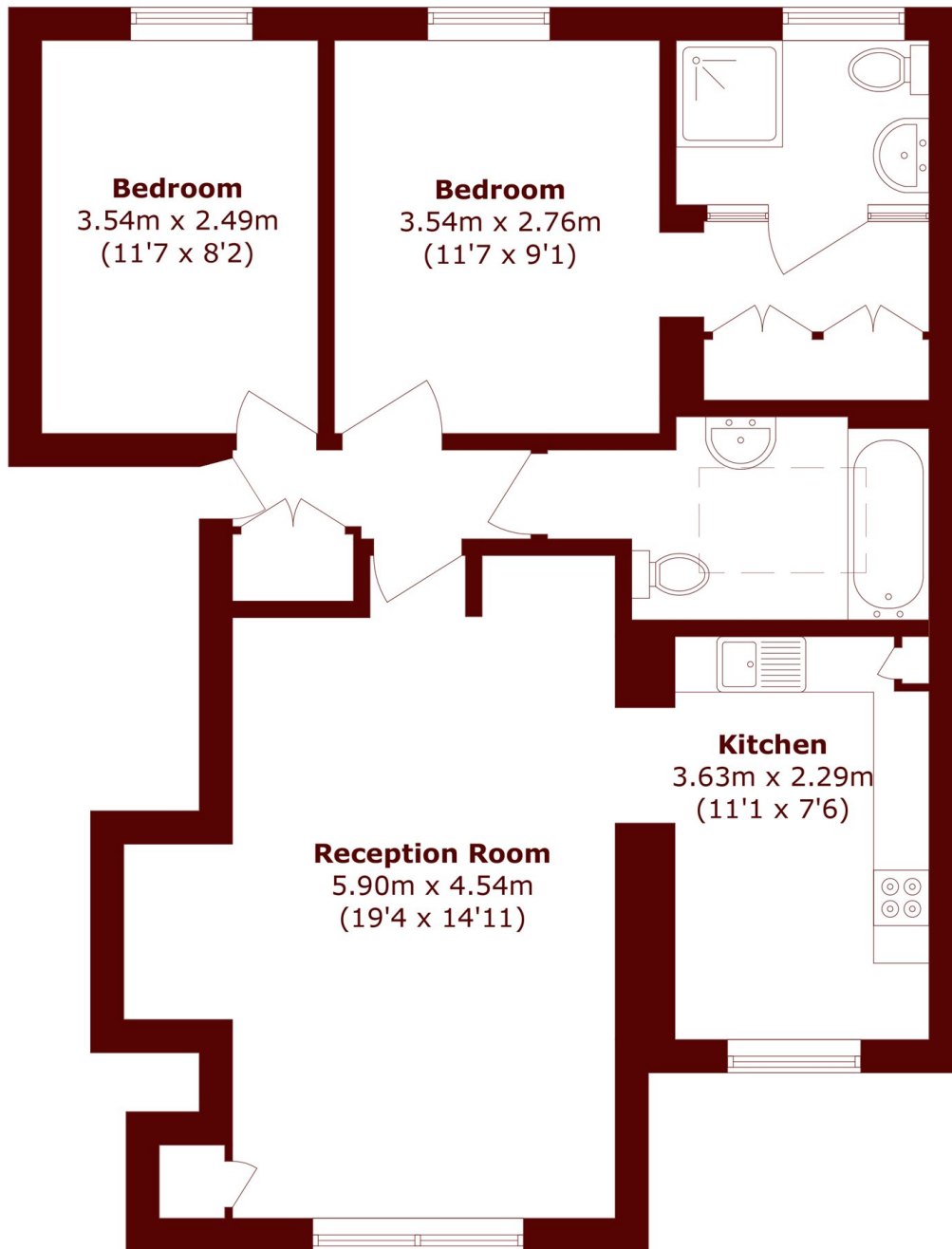
ABOUT THE PROPERTY

A superb example of a beautifully maintained two bedroom, two bathroom flat arranged over the first floor of a handsome period building and spanning just over 750 sq ft. The property features two generous double bedrooms, including a principal bedroom with bespoke built-in wardrobes and a contemporary en-suite bathroom. The spacious, light filled reception-dining room flows seamlessly into a well-equipped kitchen complete with ample wall and base units, integrated appliances, and a breakfast bar. The property further benefits from a share of the freehold and is offered to the market chain-free.



Concanon Road is a highly sought after residential street nestled between Brixton and Abbeville Village with a vast array of independent shops, cafes, bars and restaurants nearby alongside the excellent transport links into central London via Brixton Underground (Victoria Line), National Rail services and multiple bus routes.





Total area (approx.): 70.1 sq. m (754.5 sq. ft)

Marsh & Parsons Brixton
400-402 Coldharbour Lane,
London, SW9 8LF
020 7733 4595

We aim to make our particulars both accurate and reliable. However, they are not guaranteed; nor do they form part of an offer or contract. If you require clarification on any points then please contact us, especially if you're traveling some distance to view. Please note that appliances and heating systems have not been tested and therefore no warranties can be given as to their good working order.