



Leander Road, SW2

£475,000



- Two Double Bedrooms
- Desirable Location
- Period Property
- Open Plan kitchen-Living
- Chain Free
- Close To Brockwell Park



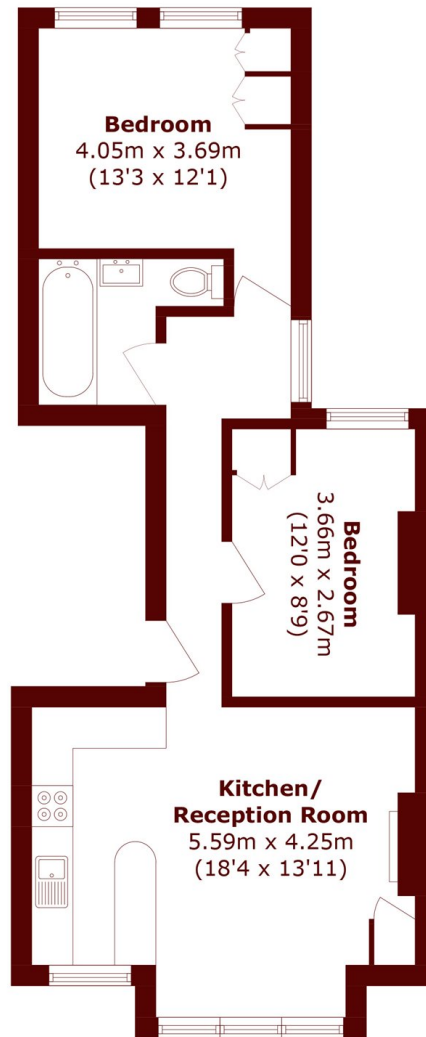


ABOUT THE PROPERTY

A fantastic two double bedroom flat set within a charming period property featuring a generous, light-filled open-plan reception room with a modern kitchen, integrated appliances and a breakfast bar. Two well-proportioned double bedrooms with built-in storage and three piece family bathroom are located to the rear of the property. This property will be offered to the market chain free.

Leander Road is a popular tree lined residential street nestled between Brixton and Herne Hill, close to the open green spaces of Brockwell Park and the vast array of independent shops, cafes, bars and restaurants of Brixton Hill alongside the excellent transport links into central London via Brixton Underground (Victoria Line), National Rail services and multiple bus routes.





Total area (approx.): 58.7 sq. m (631.8 sq. ft)

Marsh & Parsons Brixton
400-402 Coldharbour Lane,
London, SW9 8LF
020 7733 4595

We aim to make our particulars both accurate and reliable. However, they are not guaranteed; nor do they form part of an offer or contract. If you require clarification on any points then please contact us, especially if you're traveling some distance to view. Please note that appliances and heating systems have not been tested and therefore no warranties can be given as to their good working order.