



## Vaughan Road, SE5

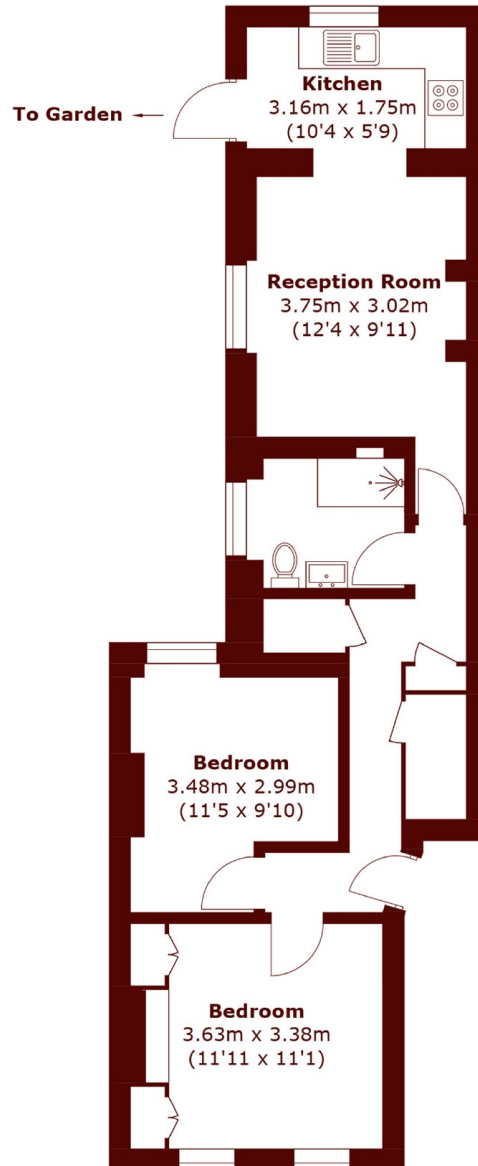
£485,000



- Two Double Bedrooms
- Private Garden

- Period Property
- End Of Terrace

- Residential Road
- Open-Plan Layout



## Ground Floor

Total area (approx.): 57.4 sq. m (617.8 sq. ft)

**Marsh & Parsons Brixton**  
400-402 Coldharbour Lane,  
London, SW9 8LF  
020 7733 4595

We aim to make our particulars both accurate and reliable. However, they are not guaranteed; nor do they form part of an offer or contract. If you require clarification on any points then please contact us, especially if you're traveling some distance to view. Please note that appliances and heating systems have not been tested and therefore no warranties can be given as to their good working order.