



Flaxman Road, SE5

£1,100,000

 4  2  1  D

- Freehold House
- Four Bedrooms
- Private Roof Terrace
- Period Property
- Open Plan Living
- Two Bathrooms





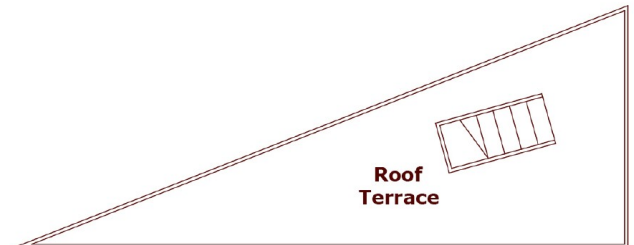
ABOUT THE PROPERTY

A unique double fronted four bedroom freehold house occupying a historic former shop building, thoughtfully and creatively transformed blending period charm with contemporary style spanning just shy of 1,400 sq ft offering a vast open plan living space, four double bedrooms, two bathrooms and a private roof terrace.

The expansive ground floor boasts a dramatic open-plan kitchen/reception room complete with a well equipped kitchen, zoned lounge and dining spaces, ample built in storage, solid wooden flooring and a large family bathroom to the rear. A statement spiral staircase leads upstairs offering three well-proportioned bedrooms with plenty of storage, an additional office/bedroom space perfect for adaptable working from home and a family bathroom. Stairs in the study lead to a private roof terrace, ideal for relaxing or entertaining while enjoying views over the neighbourhood rooftops.

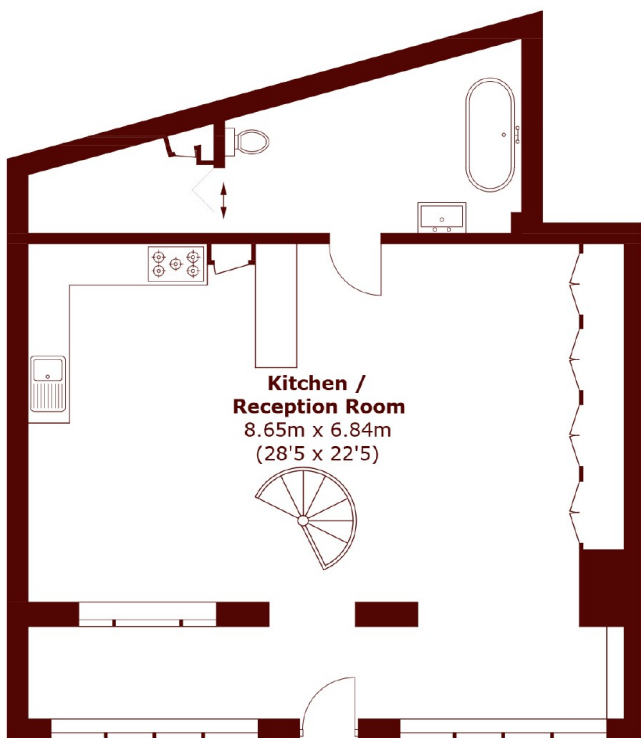
Tucked away on Flaxman Road in Loughborough Junction nestled between Brixton, Camberwell and Herne Hill with a vast array of independent cafes, shops and restaurants alongside the green open spaces of Brockwell Park and Ruskin Park. The excellent transport links via Loughborough Junction Station (just minutes away) provide swift access to central London with Brixton Underground (Victoria Line) nearby as well as



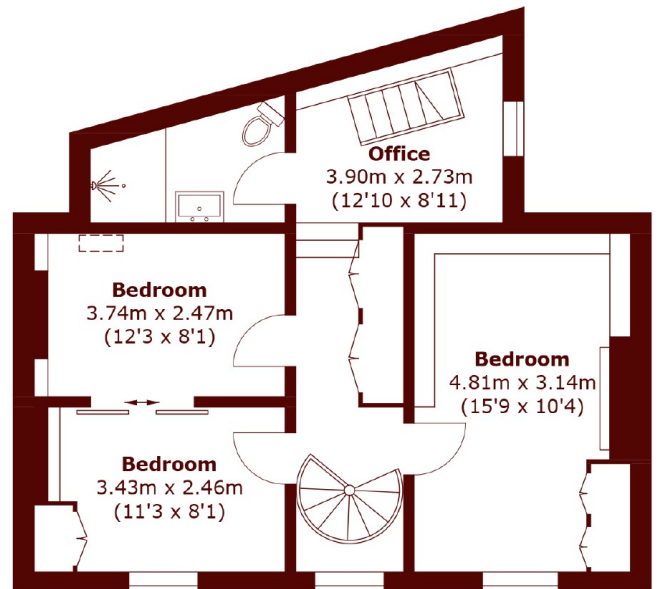


**Roof
Terrace**

Second Floor



Ground Floor



First Floor

Total area (approx.): 128.8 sq. m (1,386.3 sq. ft)
Roof Terrace: 14.6 sq. m (157.1 sq. ft)

Marsh & Parsons Brixton
400-402 Coldharbour Lane,
London, SW9 8LF
020 7733 4595

We aim to make our particulars both accurate and reliable. However, they are not guaranteed; nor do they form part of an offer or contract. If you require clarification on any points then please contact us, especially if you're traveling some distance to view. Please note that appliances and heating systems have not been tested and therefore no warranties can be given as to their good working order.