



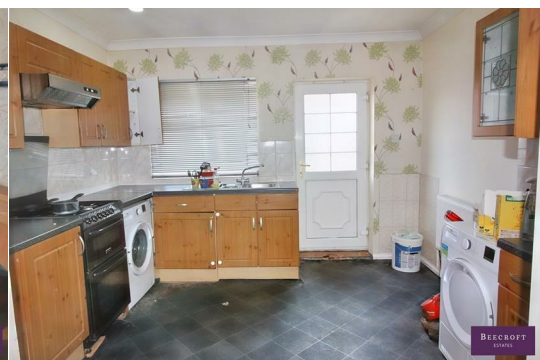
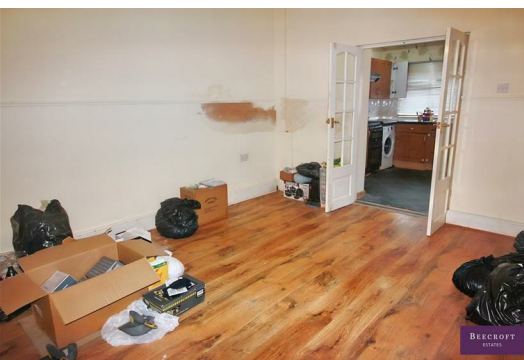
13 Albert Road

Goldthorpe, Rotherham, S63 9NJ

£65,000



Offered with a tenant in situ, this appealing two-bedroom mid-terrace property features a rear garden and is conveniently located near local amenities. Perfectly suited for investors seeking to expand their portfolio, this opportunity promises immediate rental income. Don't miss out on this lucrative investment prospect. Inquire now for more information!



GROUND FLOOR

LOUNGE

DINING ROOM

KITCHEN

FIRST FLOOR

BEDROOM ONE

BEDROOM TWO

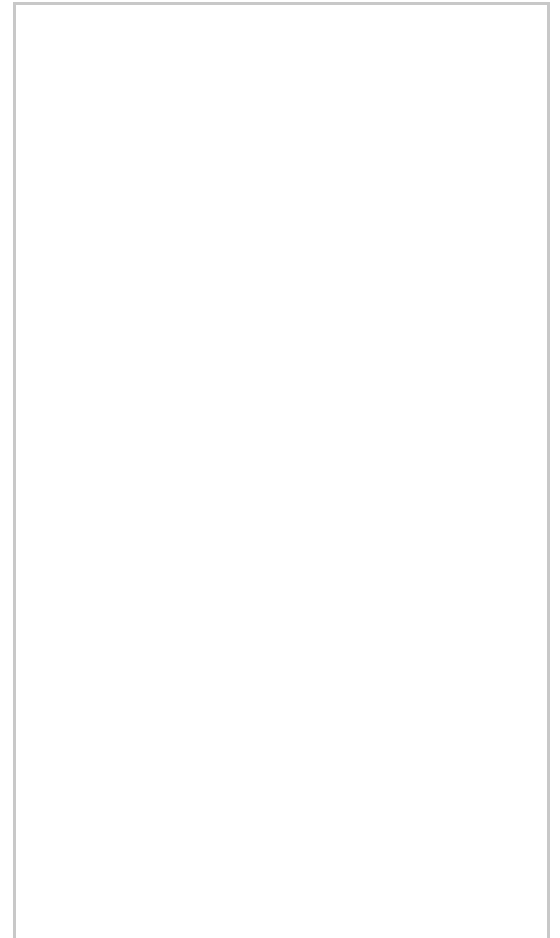
BATHROOM

OUTSIDE

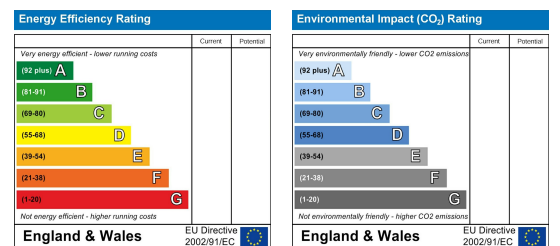
Area Map



Floor Plans



Energy Efficiency Graph



These particulars, whilst believed to be accurate are set out as a general outline only for guidance and do not constitute any part of an offer or contract. Intending purchasers should not rely on them as statements of representation of fact, but must satisfy themselves by inspection or otherwise as to their accuracy. No person in this firm's employment has the authority to make or give any representation or warranty in respect of the property.

Mexborough 40 Main Street, South Yorkshire, S64 9DU

Tel: 01709794677 Email: mexborough@beecroftstates.co.uk www.beecroftstates.co.uk