







- Superb Location
- Stunning Home
- Two Bedrooms
- Allocated Secured Parking
- Leasehold
- River Views
- First Floor
- Two Bathrooms
- Managed Building
- Excellent Amenities Nearby







**\*\* Video Tour on our YouTube Channel |  
<https://youtu.be/giOuOuEKQDw> \*\***

This opulent first-floor flat is located in the sought-after Collingwood Mansions in North Shields. Boasting stunning river views, the property is beautifully presented and will appeal to the buyer looking for a home of quality and distinction.

The apartment is positioned to the first floor and briefly comprises:- an elegant communal hall which is immaculately serviced, a private hall with storage, an impressive open plan living area with recently fitted wooden sash windows overlooking the River Tyne, raised dining area and a modern well-appointed kitchen with fitted units and integrated appliances. There are two double bedrooms; both of which have stunning contemporary en-suite facilities, and there is also a secured underground parking position. Further benefits include updated electric heating.

The Quayside is a hive of activity and very much in demand for residential living with an array of bar bistros and restaurants to enjoy. You are within easy striking distance of the A1058 Coast Road and of course our award-winning blue flag beaches. The Metro service is also available and is some 15 minutes' walk away providing access to Newcastle City Centre and of course, many main Tyneside Centres. The Ferry is also on your doorstep and can have you over to South Shields in a matter of minutes.

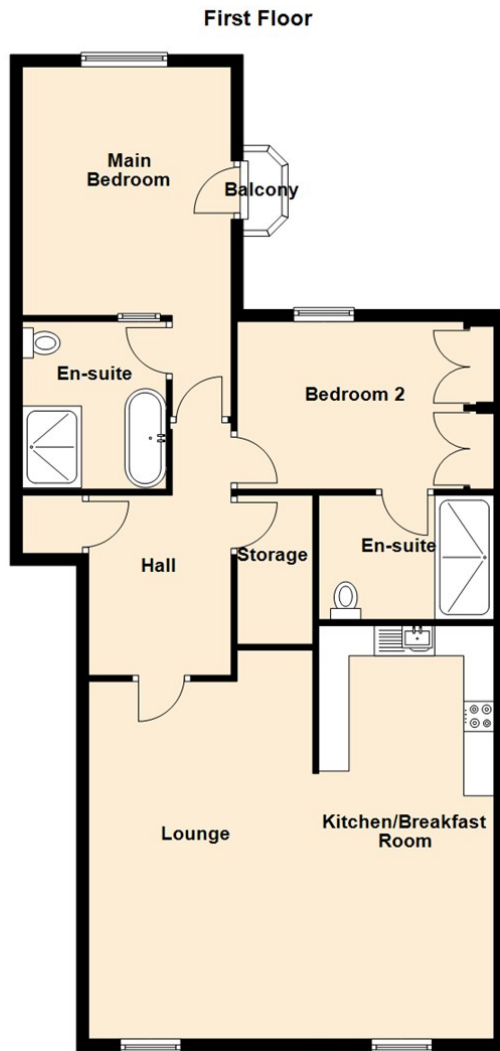
Interested parties are urged to arrange a prompt and essential internal viewing to appreciate the standard of accommodation on offer. Please call our Coastal team on 0191 257 2000 for more information.

#### Tenure

The agent understands the property to be leasehold. However, this should be confirmed with a licenced legal representative.

Council Tax Band: D



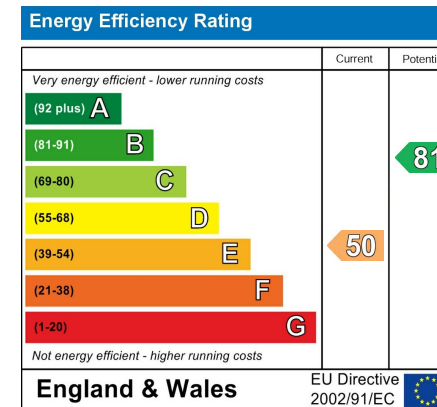


Lounge 19'5" x 12'2" (5.92 x 3.71)

Kitchen/Breakfast Room 22'5" x 9'6" (6.84 x 2.90)

Main Bedroom 13'6" x 11'4" (4.12 x 3.46)

Bedroom Two 9'1" x 13'11" (2.78 x 4.25)



## The difference between house and home

You may download, store and use the material for your own personal use and research. You may not republish, retransmit, redistribute or otherwise make the material available to any party or make the same available on any website, online service or bulletin board of your own or of any other party or make the same available in hard copy or in any other media without the website owner's express prior written consent. The website owner's copyright must remain on all reproductions of material taken from this website.



[www.janforsterestates.com](http://www.janforsterestates.com)

**Gosforth  
High Heaton  
Tynemouth**

**Property Management Centre**

**0191 236 2070  
0191 270 1122  
0191 257 2000  
0191 236 2680**

