





1



1



1

- Popular Location
- One Double Bedroom
- Front Garden
- Excellent Transport Links
- Leasehold
- Ground Floor Flat
- Ideal Starter Home
- Close To Amenties
- Council Tax Band *A*
- Call For More Information





Forming part of this charming and mature period terrace, the opportunity to purchase this well presented ground floor flat is now available. The property is an ideal purchase for the first time buyer or buy to let investor.

Briefly comprising: - communal entrance hall, spacious lounge with large bay window and polished flooring, inner hallway with access to a storage cupboard and one double bedroom, sizeable kitchen diner and a bathroom WC. Externally there is a garden to the front and a shared yard to the rear.

Further benefits include gas central heating, double glazing and some period features.

This location really is second to none and provides all the infrastructure and amenities that you could possibly require. Public travel links are close by with bus routes to main Tyneside centres. You are also close to the Metro station, which offers access to Newcastle City Centre in some twenty minutes. North Shields Fish Quay is also a fantastic nearby attraction and offers an array of bars, shops and some great restaurants.

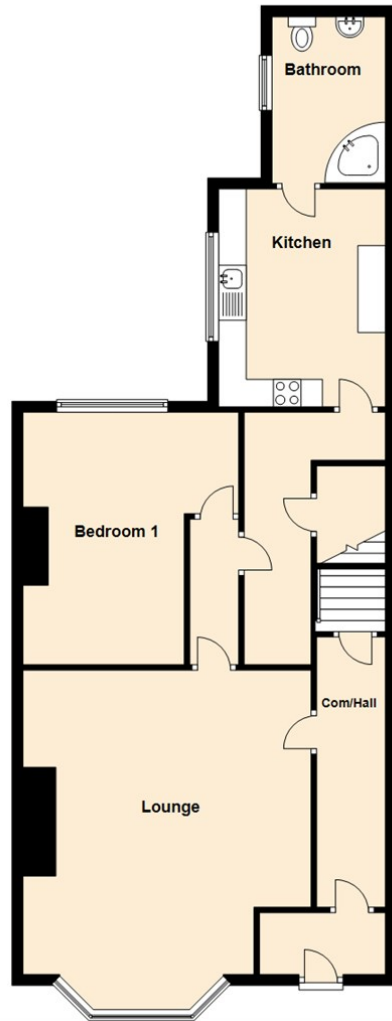


An early viewing of this property is essential. For more information and to book a viewing please call our Tynemouth team on 0191 257 2000.

Tenure

The agent understands the property to be leasehold. However, this should be confirmed with a licensed legal representative.

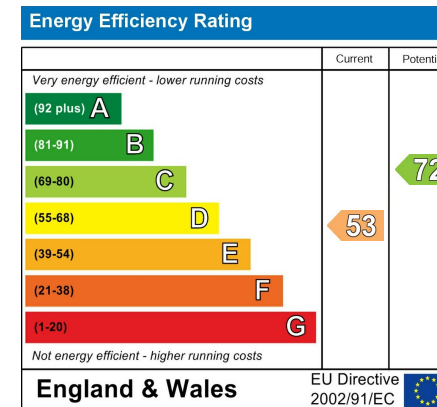
Ground Floor



Lounge 15'9" x 18'1" (4.82 x 5.53)

Bedroom One 9'7" x 15'0" (2.93 x 4.59)

Kitchen 12'11" x 9'11" (3.96 x 3.03)



The difference between house and home

You may download, store and use the material for your own personal use and research. You may not republish, retransmit, redistribute or otherwise make the material available to any party or make the same available on any website, online service or bulletin board of your own or of any other party or make the same available in hard copy or in any other media without the website owner's express prior written consent. The website owner's copyright must remain on all reproductions of material taken from this website.



www.janforsterestates.com

Gosforth
High Heaton
Tynemouth
Property Management Centre

0191 236 2070
0191 270 1122
0191 257 2000
0191 236 2680

