





3



2



1

- Sought-After Area
- Beautifully Presented
- Two Reception Rooms
- Garage + Driveway
- Transport Links
- Semi-Detached House
- Three Bedrooms
- Generous Loft Space
- Local Facilities
- Council Tax Band *E*





Jan Forster Estates are delighted to welcome to the sale market this sunning semi-detached house on the highly desirable Kennersdene, nestled in the charming seaside town- Tynemouth.

This highly sought-after location is just a short stroll from the blue flag-awarded Tynemouth Long Sands Beach. There is a diverse selection of local amenities nearby-including charming cafes, lively bars, and excellent restaurants. The close by A1058 Coast Road offers a direct and efficient route into Newcastle city centre, while excellent public transport links, including frequent bus services and the metro service, provide seamless connectivity throughout the region. Ideal for families, the property is also within easy reach of several highly regarded schools, making it a perfect choice for those seeking both convenience and community.

The property briefly comprises: entrance porch, hallway, lounge with a beautiful fireplace, spacious dining room which leads to the well-appointed kitchen with a walk-in pantry and access to the garage and the handy downstairs WC. There is also an orangery, that could be accessed directly through the dining room, which leads to the stunning rear garden. Off the landing to the first floor, you are presented with three bedrooms- one of them with a built-in wardrobe, as well as the family bathroom WC. Bedroom three provides access to the generous loft space, which could be used as an entertainment room or another bedroom.

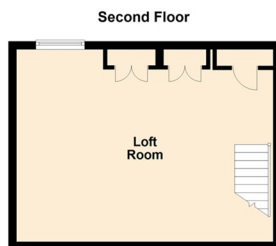
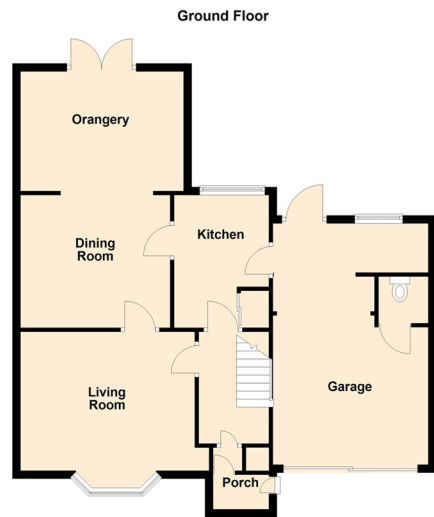
Externally, there is a charming garden to the front and a spacious garden to the rear with mature and fruit trees, patio and lawn areas- ideal for entertaining guests and enjoying alfresco dining during the long summer days.

This immaculate home enjoys beautiful sea views and must be viewed. For more information and to book a viewing, please, call 0191 257 2000.

Tenure

The agent understands the property to be freehold. However, this should be confirmed with a licenced legal representative.

Council Tax band *E



Lounge 13'2" x 11'3" (4.02 x 3.45)

Kitchen 10'10" x 8'10" (3.32 x 2.70)

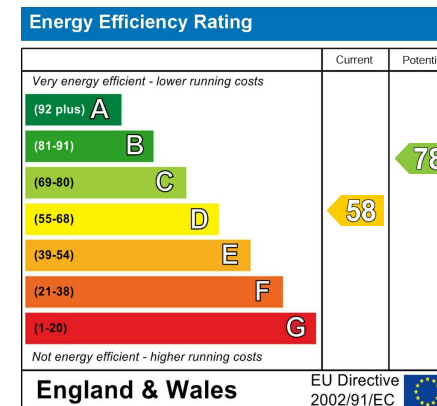
Dining Room 11'6" x 10'11" (3.51 x 3.35)

Loft Space 21'1" x 15'3" (6.43 x 4.65)

Bedroom One 11'3" x 10'11" (3.45 x 3.35)

Bedroom Two 11'4" x 11'3" (3.47 x 3.45)

Bedroom Three 9'2" x 7'9" (2.81 x 2.37)



The difference between house and home

You may download, store and use the material for your own personal use and research. You may not republish, retransmit, redistribute or otherwise make the material available to any party or make the same available on any website, online service or bulletin board of your own or of any other party or make the same available in hard copy or in any other media without the website owner's express prior written consent. The website owner's copyright must remain on all reproductions of material taken from this website.



www.janforsterestates.com

Gosforth

High Heaton

Tynemouth

Property Management Centre

0191 236 2070

0191 270 1122

0191 257 2000

0191 236 2680

