





2



1



1

- Sought After Location
- River Views
- Two Double Bedrooms
- No Upper Chain
- Viewing Recommended
- Second Floor Living
- Balcony
- Serviced Elevator
- Council Tax Band *C*
- Call For More Information





** Video Tour on Our YouTube Channel | <https://youtu.be/sXHvU464kSo>
**

Situated on the desirable Duke Street in North Shields, this impressive second-floor apartment with stunning River views offers a perfect combination of modern living and everyday convenience. An excellent choice for first-time buyers, couples, and smaller families.

Accessed via a communal entrance with both stairs and a lift, the apartment comprises: a private entrance hallway with built-in storage, a bright and spacious open-plan living area boasting a balcony with fantastic views and a modern fitted kitchen that includes integrated appliances and a breakfast bar. There are two generously sized double bedrooms, the main with a Juliet balcony and a contemporary bathroom/WC, featuring a shower over the bath. Additional benefits include gas central heating and double glazing throughout.

Located close to the Ferry Landing, this apartment offers the charm of Quayside living, along with the vibrant atmosphere that comes with it. The proximity to Tynemouth adds to the appeal, providing access to beautiful beaches, local shops, and a variety of dining options.

Viewing is essential to fully appreciate this property. For more information, please call our Tynemouth branch on 0191 257 2000.

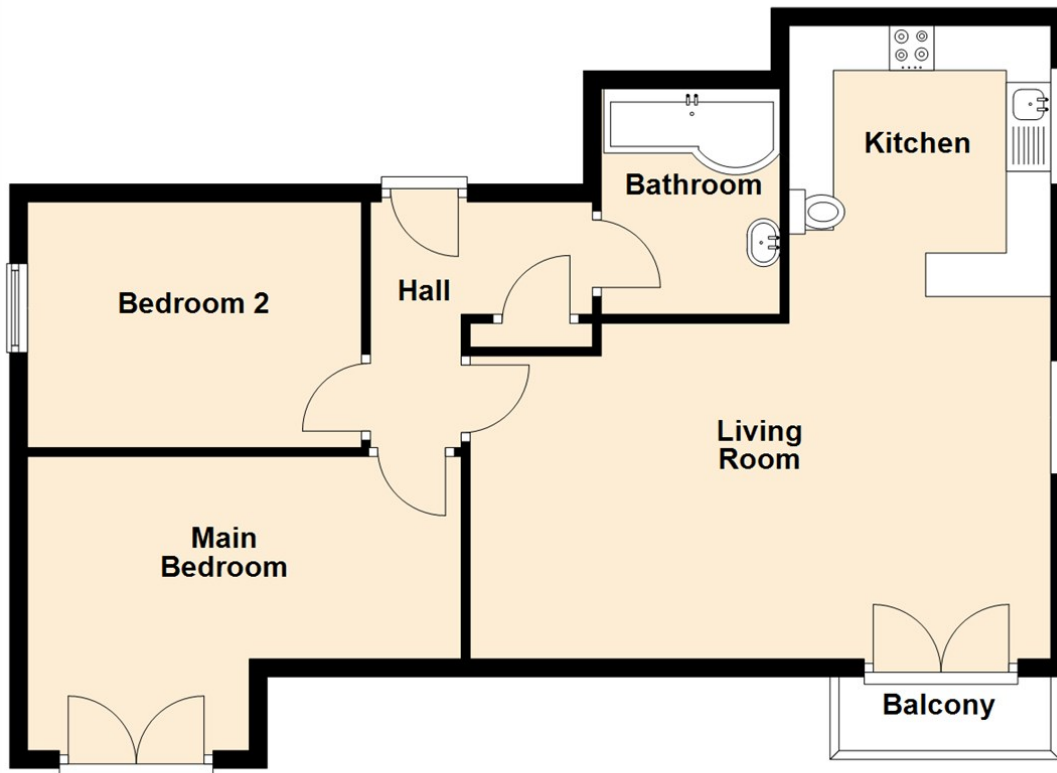
Tenure

The agent understands the property to be leasehold. However, this should be confirmed with a licensed legal representative.

Council Tax band *C*.



Second Floor




Living Room 12'4" x 21'4" (3.77 x 6.52)

Kitchen 11'1" x 9'7" (3.38 x 2.94)

Main Bedroom 10'4" x 15'11" (3.16 x 4.87)

Bedroom Two 9'0" x 12'3" (2.76 x 3.75)

Energy Efficiency Rating

	Current	Potential
Very energy efficient - lower running costs		
(92 plus) A		
(81-91) B	83	83
(69-80) C		
(55-68) D		
(39-54) E		
(21-38) F		
(1-20) G		
Not energy efficient - higher running costs		
England & Wales	EU Directive 2002/91/EC 	

The difference between house and home

You may download, store and use the material for your own personal use and research. You may not republish, retransmit, redistribute or otherwise make the material available to any party or make the same available on any website, online service or bulletin board of your own or of any other party or make the same available in hard copy or in any other media without the website owner's express prior written consent. The website owner's copyright must remain on all reproductions of material taken from this website.



www.janforsterestates.com

Gosforth
High Heaton
Tynemouth

Property Management Centre

0191 236 2070

0191 270 1122

0191 257 2000

0191 236 2680

