





- Desirable Location
- Extended To Side
- Close To The Beach
- Freehold
- Viewing Recommended
- Semi Detached Home
- Four Bedrooms
- Off Street Parking
- Council Tax Band *C*
- Call For More Information





**** Video Tour on our YouTube Channel | <https://youtu.be/zbwjvADZbSA> ****

This beautifully presented four-bedroom semi-detached family home is located in a highly desirable area of Cullercoats, offering the perfect family home. The property has been thoughtfully extended to the side, providing additional living space.

Cullercoats itself is a picturesque coastal village, known for its proximity to stunning beaches and a relaxed, friendly atmosphere. The area offers a unique combination of coastal charm and urban convenience, making it a highly sought-after location. With its range of independent shops, cafes, and eateries, as well as good local schools, it is an ideal place to raise a family. There are also excellent road and public transport links, offering easy access to Whitley Bay and Newcastle city centre.

The property is made up of a welcoming entrance hallway with ground floor WC, a spacious lounge with bay window and feature fireplace, a bright and airy dining room with French doors leading to the sun room, and a spacious kitchen with stylish fitted units and access to both the rear and a handy utility room. To the first floor there are four bedrooms and a modern refitted family shower room WC.

Externally there is a charming East-facing rear garden with a patio, lawn and decked area along with a paved driveway to the front providing off-street parking.

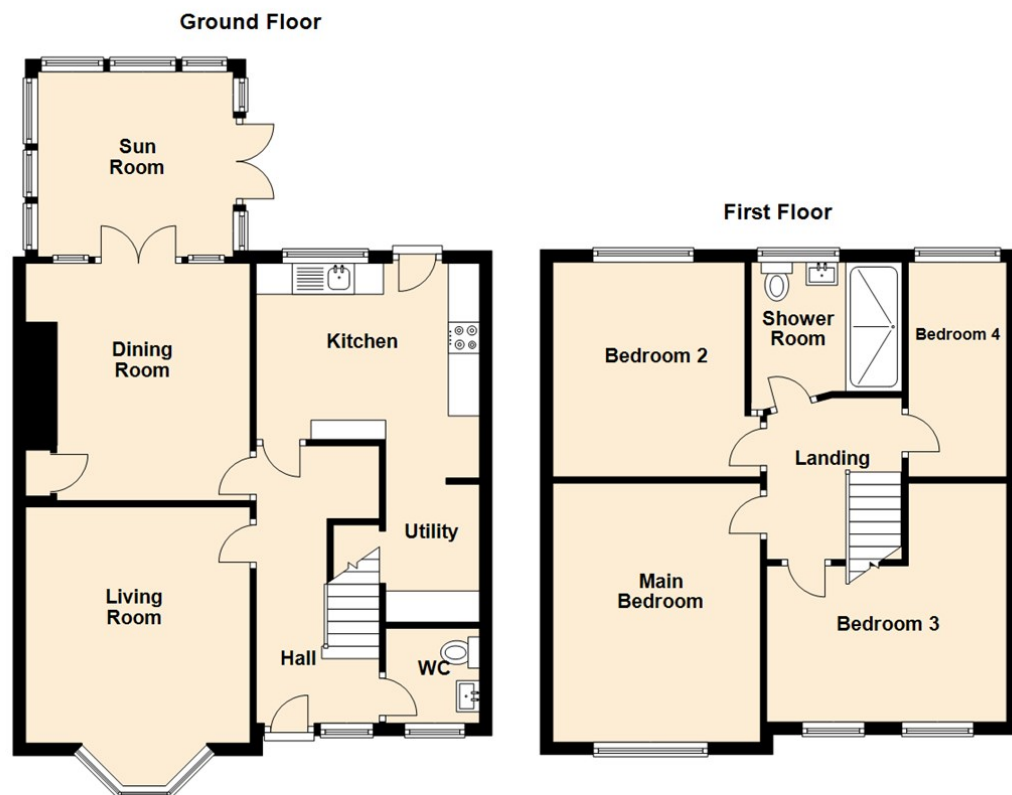
Please contact our Coastal team 0191 257 2000 for more information on this fantastic family home and to arrange a viewing.

Tenure

The agent understands the property to be freehold. However, this should be confirmed with a licenced legal representative.

Council Tax band *C*.





Living Room 12'5" x 11'10" (3.80 x 3.61)

Dining Room 12'6" x 11'10" (3.82 x 3.61)

Sun Room 9'9" x 10'3" (2.98 x 3.14)

Kitchen 11'3" x 12'3" (3.45 x 3.74)


Utility 7'3" x 4'11" (2.22 x 1.51)

Main Bedroom 13'2" x 10'9" (4.03 x 3.29)

Bedroom Two 11'3" x 10'1" (3.45 x 3.09)

Bedroom Three 8'3" x 12'7" (2.52 x 3.86)

Bedroom Four 11'9" x 5'2" (3.60 x 1.58)

Energy Efficiency Rating		
	Current	Potential
Very energy efficient - lower running costs		
(92 plus) A		
(81-91) B		
(69-80) C		
(55-68) D		
(39-54) E		
(21-38) F		
(1-20) G		
Not energy efficient - higher running costs		
	74	84
England & Wales	EU Directive 2002/91/EC 	

The difference between house and home

You may download, store and use the material for your own personal use and research. You may not republish, retransmit, redistribute or otherwise make the material available to any party or make the same available on any website, online service or bulletin board of your own or of any other party or make the same available in hard copy or in any other media without the website owner's express prior written consent. The website owner's copyright must remain on all reproductions of material taken from this website.



www.janforsterestates.com

Gosforth
High Heaton
Tynemouth
Property Management Centre

0191 236 2070
0191 270 1122
0191 257 2000
0191 236 2680

