





- Sought After Location
- Four Bedrooms
- Close To Amenities
- Council Tax band *D*.
- Viewing Recommended
- New Build Home
- Corner Plot
- Off Street Parking
- Freehold
- Call For More Information





A truly rare opportunity to purchase a stunning new build home on an established and highly sought-after residential estate. This property has been built to an extremely high standard and offers the discerning buyer a home of real distinction.

Internally the property briefly comprises: - entrance hall, spacious lounge with French doors and dual aspect windows, fully fitted Howdens kitchen and utility room with quartz worktops and a ground floor w.c. An oak and glass staircase leads to the first floor, which boasts four generous bedrooms along with a tiled bathroom and en suite with fitted vanity units. There is also a walk-in dressing room.

Externally, from the living room you can access a bespoke oak porch and gazebo with slate roof (linked to house with covered walkway) complete with exterior lighting and power sockets to create an outdoor dining area. There is parking for three cars and exterior landscaping, including Indian sandstone paving and turfed lawns along with a purpose-built external store with power and lighting. There is also an EV ready connection for a charger.

Further benefits include double glazing, gas central heating, oak veneered internal doors throughout and gigabit ready broadband connection.

Preston Wood is set within a peaceful, residential location. It is a highly regarded area which is well placed for access to good schools, public travel links and local shops. The A1058 coast road is close by so you have access to the Town Centre which is around twenty minutes' drive away. Local beaches and the Fish Quay are also within easy reach.

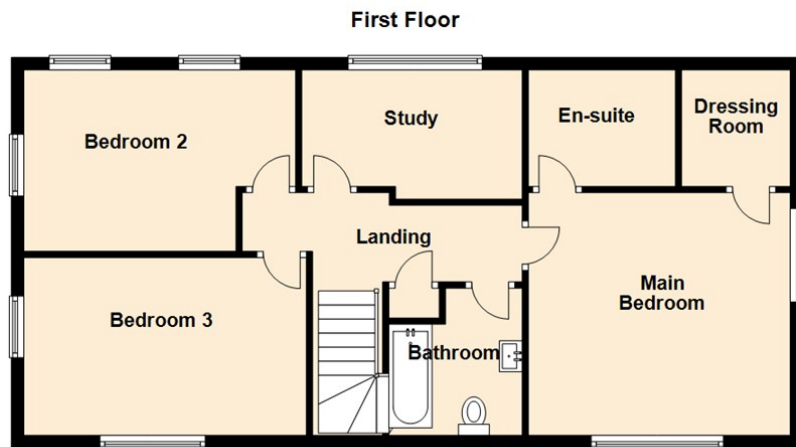
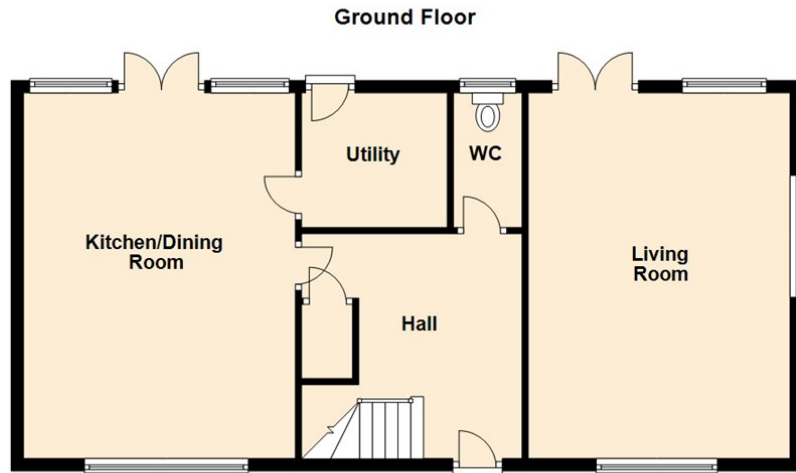
For more information and to book a viewing, please call our Tynemouth branch on 0191 257 2000.

Tenure

The agent understands the property to be freehold. However, this should be confirmed with a licenced legal representative.

Council Tax band *D*.

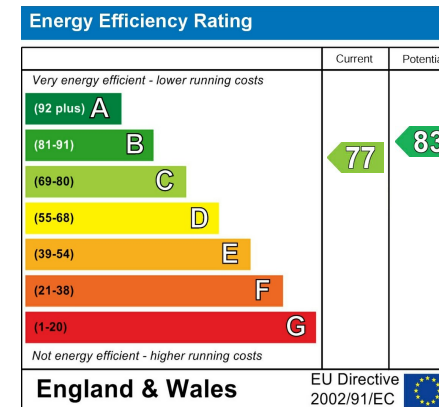




The difference between house and home

You may download, store and use the material for your own personal use and research. You may not republish, retransmit, redistribute or otherwise make the material available to any party or make the same available on any website, online service or bulletin board of your own or of any other party or make the same available in hard copy or in any other media without the website owner's express prior written consent. The website owner's copyright must remain on all reproductions of material taken from this website.

- Living Room 19'5" x 13'10" (5.92 x 4.24)
 - Utility 7'1" x 7'8" (2.18 x 2.36)
 - Kitchen/Dining Room 19'5" x 14'5" (5.92 x 4.40)
 - Main Bedroom 12'10" x 13'11" (3.93 x 4.25)
 - Dressing Room 6'2" x 5'9" (1.89 x 1.76)
 - Study 6'10" x 11'8" (2.10 x 3.56)
 - Bedroom Two 9'7" x 14'5" (2.94 x 4.40)
 - Bedroom Three 9'5" x 15'0" (2.88 x 4.58)
- DISCLAIMER



Gosforth	0191 236 2070
Newcastle	0191 284 4050
High Heaton	0191 270 1122
Tynemouth	0191 257 2000
Low Fell	0191 487 0800
Property Management Centre	0191 236 2680

