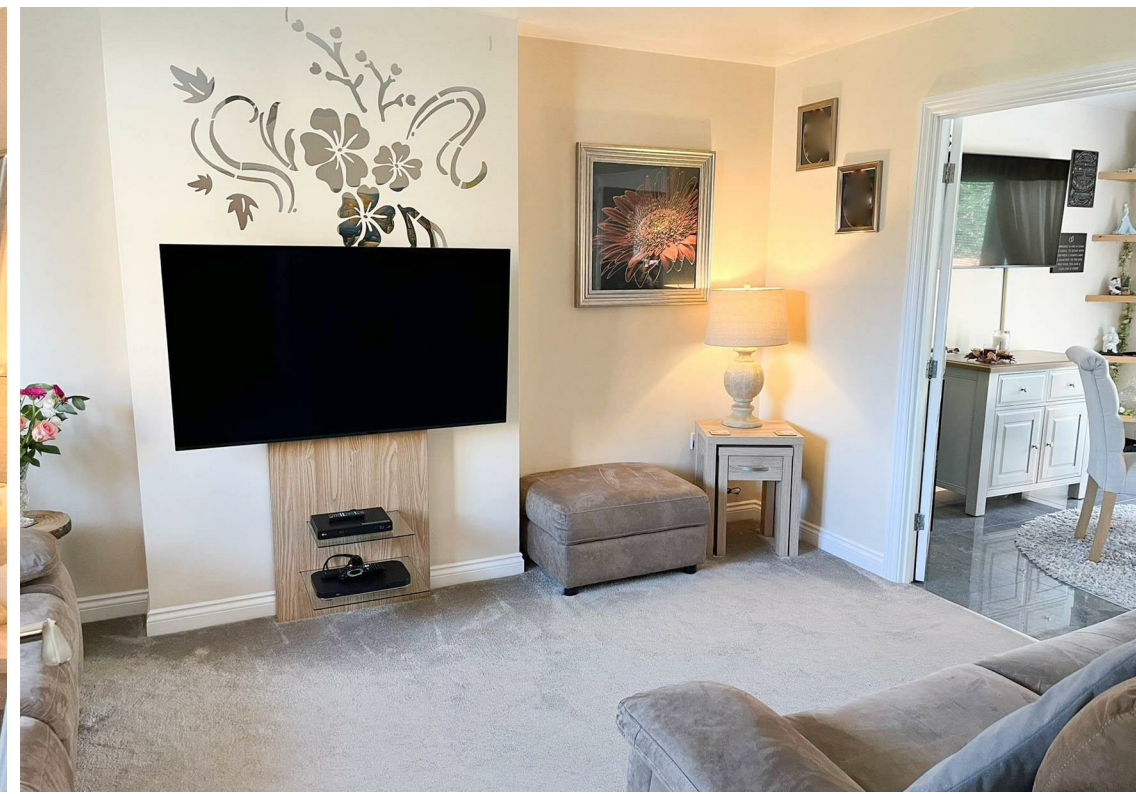






- Sought After Location
- Four Double Bedrooms
- Three Storey Home
- Off Street Parking
- Viewing Recommended
- Detached Family Home
- Immaculately Presented
- Three Bathrooms
- Council Tax Band \*C\*
- Call For More Information





\*\* Video Tour on our YouTube Channel | <https://youtu.be/m5obK16M6y8> \*\*

Jan Forster Estates are delighted to present this stunning, four-bedroom detached property, positioned on the popular Ridley Gardens. The three-storey home has been superbly decorated throughout and will appeal to the growing family.

Internally the property briefly comprises to the ground floor: - entrance hallway with storage and ground floor w.c, bright and airy lounge leading to the dining room which has double doors to the rear garden and a modern kitchen with fitted wall and floor units providing ample storage and an integrated oven and hob. To the first floor there are three double bedrooms, the main with an en suite facility and there is also a modern family bathroom/w.c. To the second floor there is the generous main bedroom with an en suite. The property further benefits from gas central heating and double glazing.

Externally there is a garden to the front and a driveway leading to the detached garage. There is also an additional parking space to the front of the property. To the rear there is a beautiful, easy to maintain paved garden.

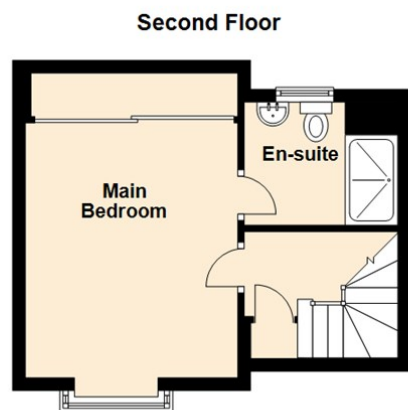
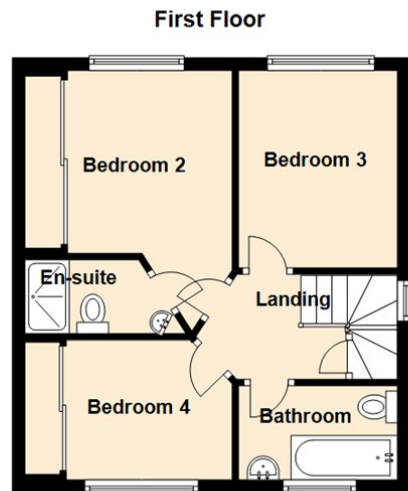
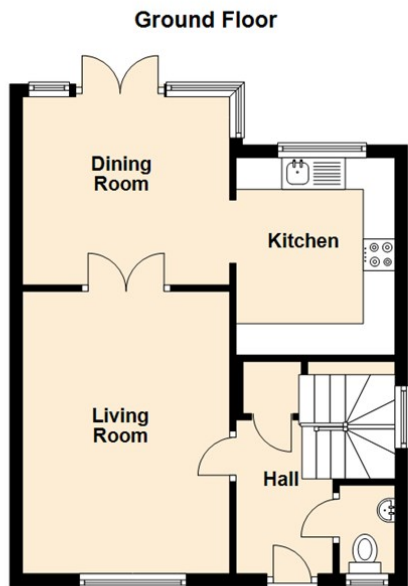
The location offers ease of access to a wealth of local amenities, the Metro, and local green spaces. Northumberland Park shopping centre is just over one mile away and the A19 and Coast Road are also within easy reach and provide a quick route to Newcastle City Centre. For the growing family, the property is well positioned for well-regarded schools.

For more information and to book your viewing please call our Coastal team on 0191 257 2000

Tenure

The agent understands the property to be freehold. However, this should be confirmed with a licenced legal representative.

Council Tax band \*C\*



Living Room 14'7" x 10'9" (4.46 x 3.30)

Dining Room 9'8" x 10'8" (2.97 x 3.27)

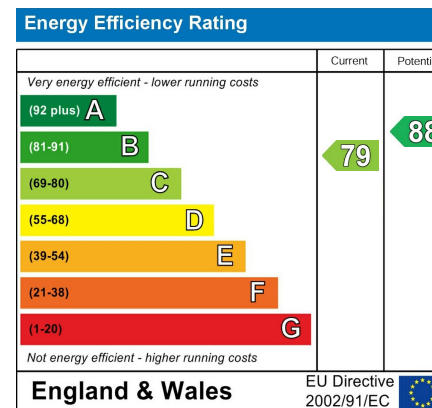
Kitchen 10'2" x 8'2" (3.12 x 2.51)

Main Bedroom 15'9" x 11'2" (4.81 x 3.42)

Bedroom Two 11'11" x 10'8" (3.64 x 3.27)

Bedroom Three 10'2" x 8'2" (3.12 x 2.51)

Bedroom Four 6'10" x 10'8" (2.10 x 3.27)



## The difference between house and home

You may download, store and use the material for your own personal use and research. You may not republish, retransmit, redistribute or otherwise make the material available to any party or make the same available on any website, online service or bulletin board of your own or of any other party or make the same available in hard copy or in any other media without the website owner's express prior written consent. The website owner's copyright must remain on all reproductions of material taken from this website.



[www.janforsterestates.com](http://www.janforsterestates.com)

Gosforth

0191 236 2070

Newcastle

0191 284 4050

High Heaton

0191 270 1122

Tynemouth

0191 257 2000

Low Fell

0191 487 0800

Property Management Centre

0191 236 2680

