




Mariano
Real Estate

**Braque Building 86 Ewer Street
London, SE1 0FT
£2,700 Per Month**

This beautifully presented two double bedroom apartment is situated within the desirable Braque Building, right in the vibrant heart of Southwark.

The apartment offers a warm and inviting atmosphere with a well-thought-out layout and excellent storage throughout. The property comprises a spacious reception room, a fully integrated kitchen, two generously sized double bedrooms, and a modern family bathroom.

Residents will be spoiled for choice with a fantastic selection of trendy bars, cafes, and restaurants just moments away.

London Bridge has become one of the capital's most sought-after and fashionable neighbourhoods, perfectly located near iconic attractions such as Borough Market, Bankside, The Cut, Hay's Galleria, The Tate Modern, and London's Southbank.

Ideal for both professionals and lifestyle seekers, the Braque Building boasts excellent transport connections, with Southwark and London Bridge Underground stations, as well as London Bridge Railway station, all within easy reach. Whether you're commuting to the office, exploring the West End, or catching a flight for a weekend away, this location offers unmatched convenience.



Living room 17'1" x 8'0" (5.21 x 2.46)



Kitchen 13'3" x 10'9" (4.06 x 3.3)



Bedroom 1 11'10" x 11'2" (3.63 x 3.41)

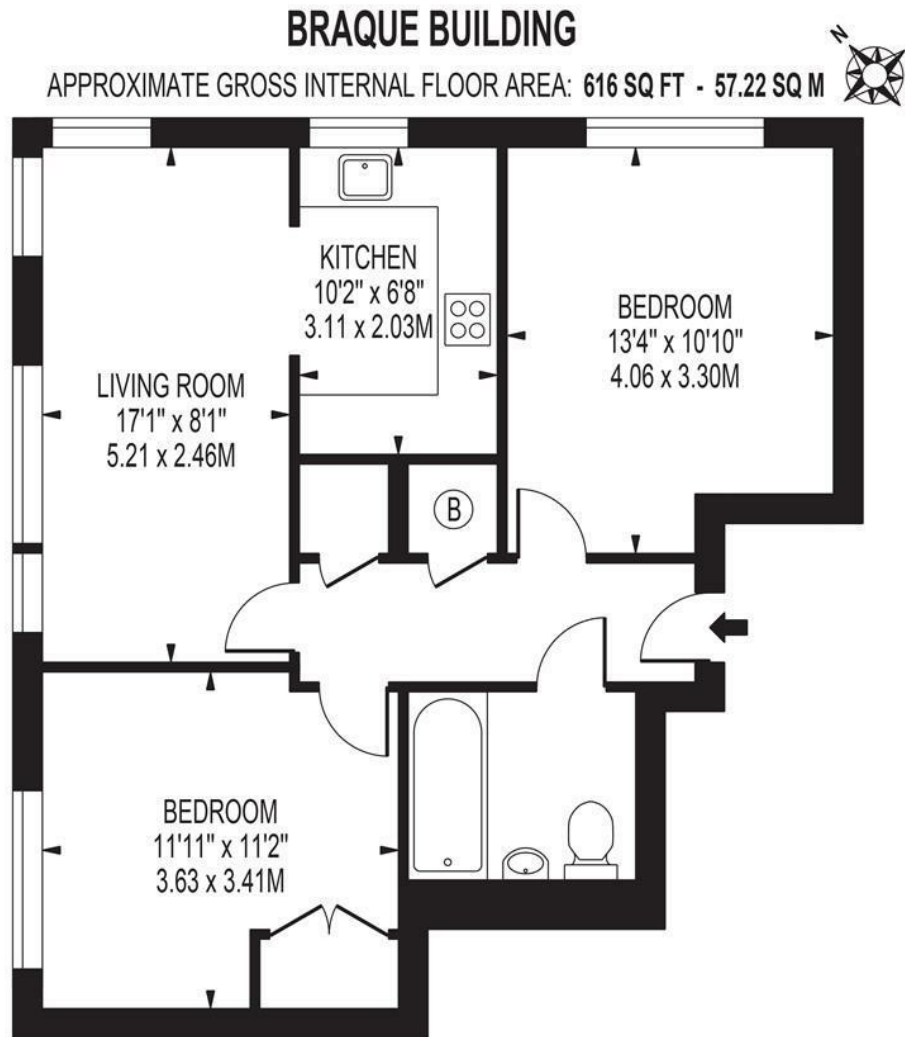


Bedroom 2 13'3" x 10'9" (4.06 x 3.3)



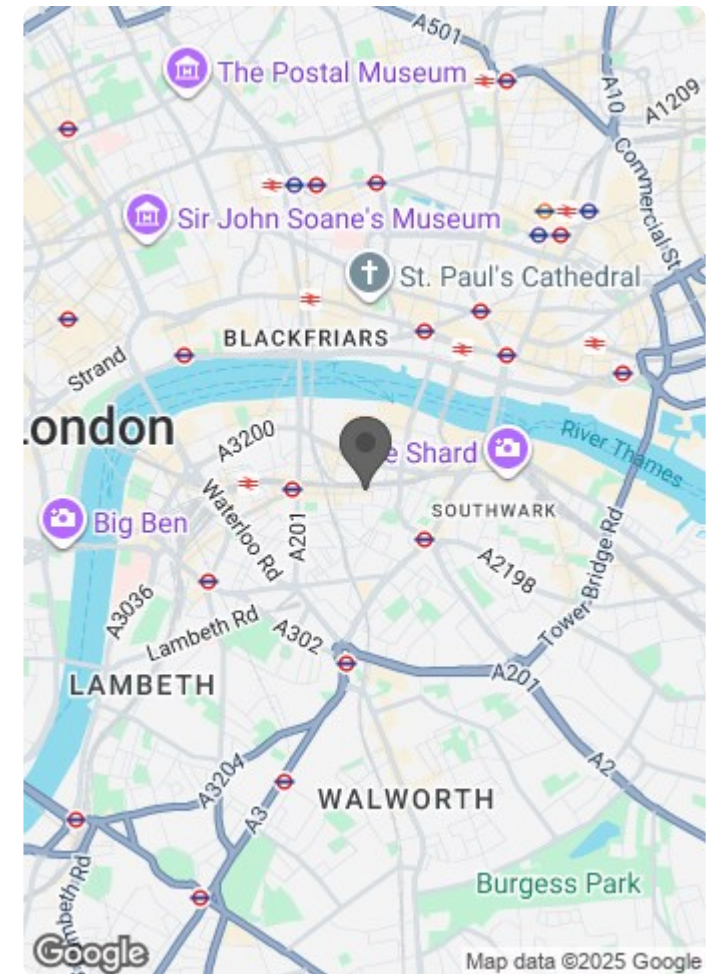






FOR ILLUSTRATION PURPOSES ONLY

THIS FLOOR PLAN SHOULD BE USED AS A GENERAL OUTLINE FOR GUIDANCE ONLY AND DOES NOT CONSTITUTE IN WHOLE OR IN PART AN OFFER OR CONTRACT.
ANY INTENDING PURCHASER OR LESSEE SHOULD SATISFY THEMSELVES BY INSPECTION, SEARCHES, ENQUIRIES AND FULL SURVEY AS TO THE CORRECTNESS OF EACH STATEMENT.
ANY AREAS, MEASUREMENTS OR DISTANCES QUOTED ARE APPROXIMATE AND SHOULD NOT BE USED TO VALUE A PROPERTY OR BE THE BASIS OF ANY SALE OR LET.



Energy Efficiency Rating		
	Current	Potential
Very energy efficient - lower running costs		
(92 plus) A		
(81-91) B		
(69-80) C		
(55-68) D		
(39-54) E		
(21-38) F		
(1-20) G		
Not energy efficient - higher running costs		
England & Wales	EU Directive 2002/91/EC	

Environmental Impact (CO ₂) Rating		
	Current	Potential
Very environmentally friendly - lower CO ₂ emissions		
(92 plus) A		
(81-91) B		
(69-80) C		
(55-68) D		
(39-54) E		
(21-38) F		
(1-20) G		
Not environmentally friendly - higher CO ₂ emissions		
England & Wales	EU Directive 2002/91/EC	