



**62 Bawley Court
Royal Docks, London E16 2FU
£1,645 Per Month**

A spacious third floor one bedroom apartment in a modern riverside development. The apartment benefits from large private balcony, good storage space and fully fitted kitchen.

The development is just 5 minutes walk from Gallions Reach DLR Station, 10 minutes walk from London's new Asian Business Port, and only minutes away from University of East London. At Canning Town, residents can change to the Jubilee line linking Canary Wharf, London Bridge, Westminster and London's buzzing West End.

Council tax - Newham council, Band C

P.S. The sofa, arm chair, dining table & dining chairs are not included.

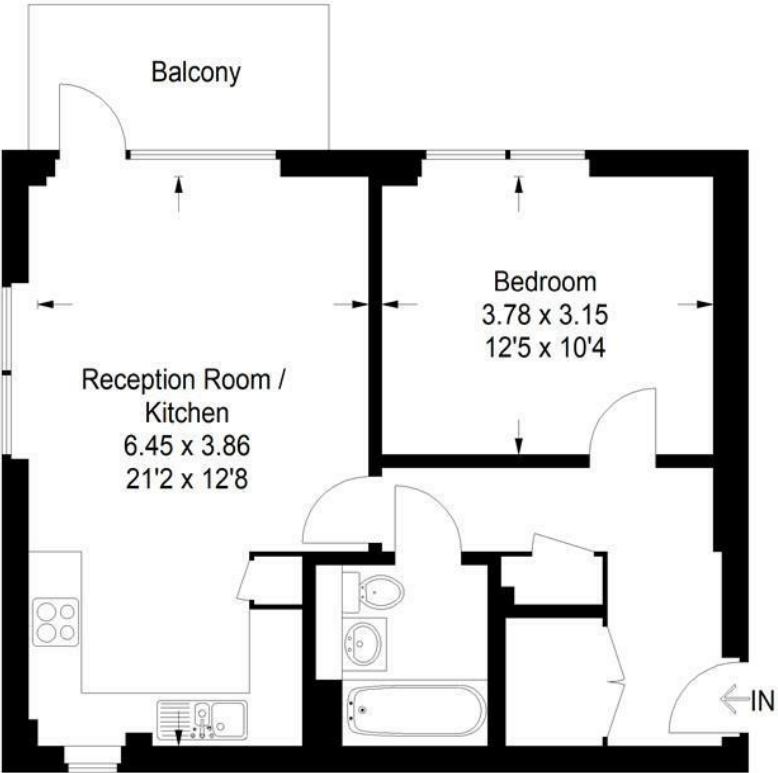






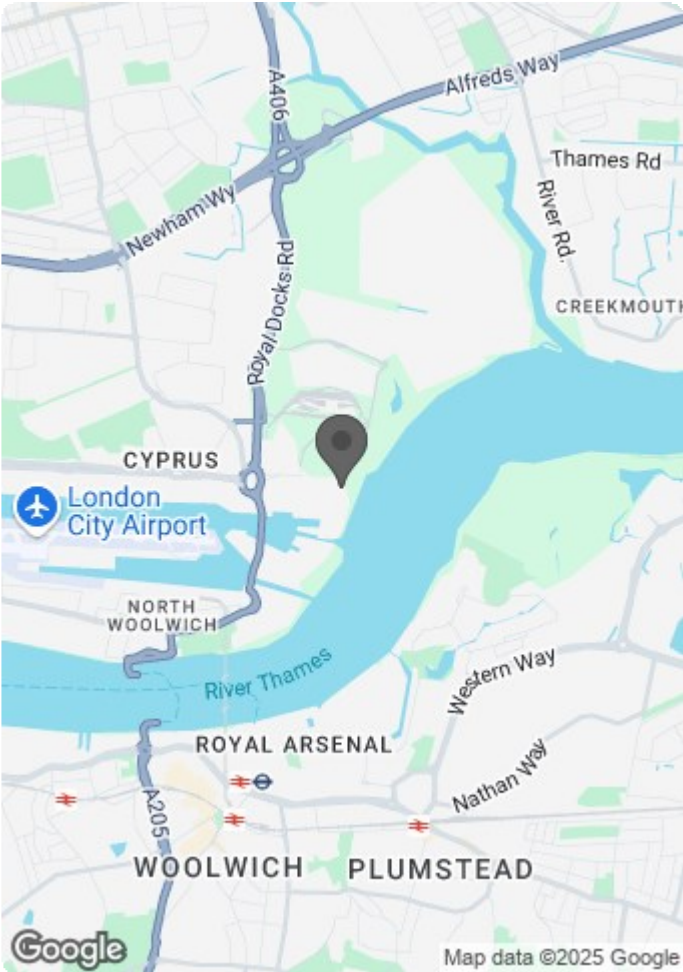
Bawley Court, E16

Approximate Gross Internal Area
51.7 sq m / 556 sq ft



Third Floor

Illustration for identification purposes only,
measurements are approximate, not to scale.



Energy Efficiency Rating		
	Current	Potential
Very energy efficient - lower running costs		
(92 plus) A		
(81-91) B	85	85
(69-80) C		
(55-68) D		
(39-54) E		
(21-38) F		
(1-20) G		
Not energy efficient - higher running costs		
England & Wales	EU Directive 2002/91/EC	

Environmental Impact (CO ₂) Rating		
	Current	Potential
Very environmentally friendly - lower CO ₂ emissions		
(92 plus) A		
(81-91) B		
(69-80) C		
(55-68) D		
(39-54) E		
(21-38) F		
(1-20) G		
Not environmentally friendly - higher CO ₂ emissions		
England & Wales	EU Directive 2002/91/EC	