



**5 Rosler Building  
London, SE1 0FT  
£575 Per Week**

A modern, directly south facing one bedroom apartment situated within this boutique development in the heart of fashionable London Bridge.

This one bedroom apartment is located on the second floor of a stylish scheme with day time concierge service.

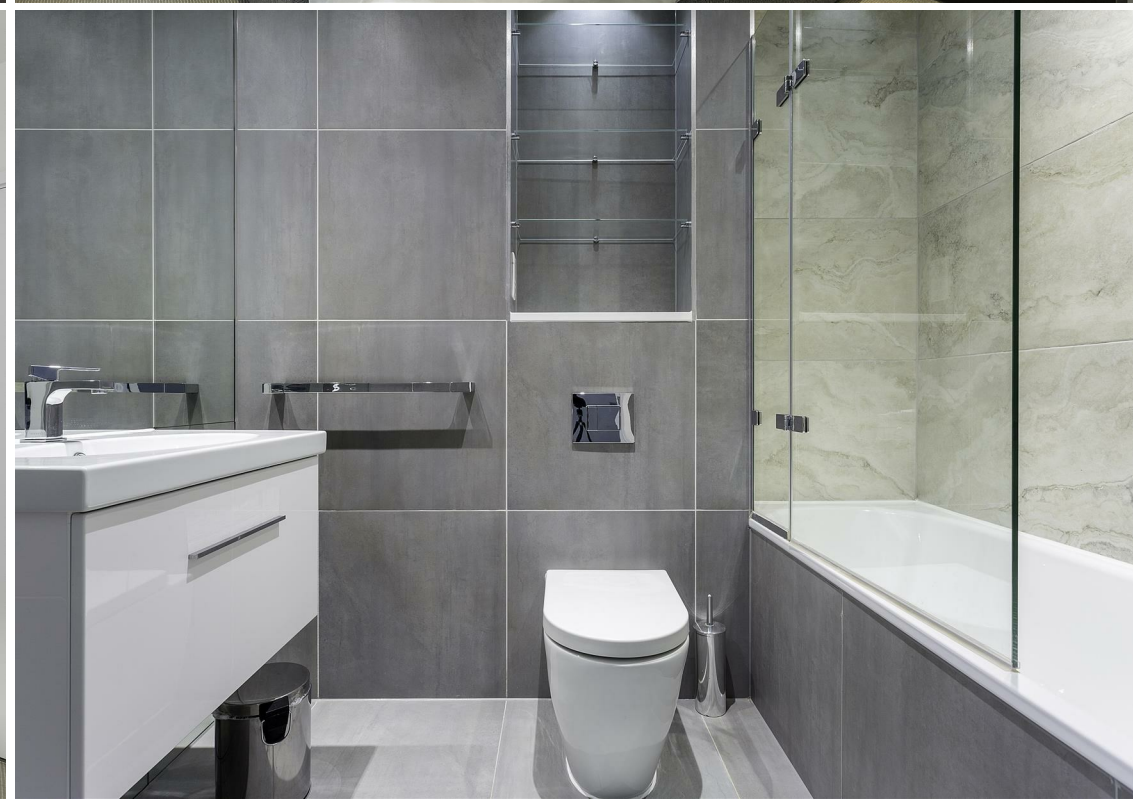
This stunning and bright apartment has direct views over Union Street & benefits from a spacious private South-facing balcony, under floor heating through out, tiled floor to the reception room and hallway, and modern and minimalist Kitchen and Bathroom.

With Borough and London Bridge underground stations close by for superb transport links, and having a vast array of bars & restaurants nearby, including Borough Market, and Bankside only a short walk away, residents will have London at their doorstep.

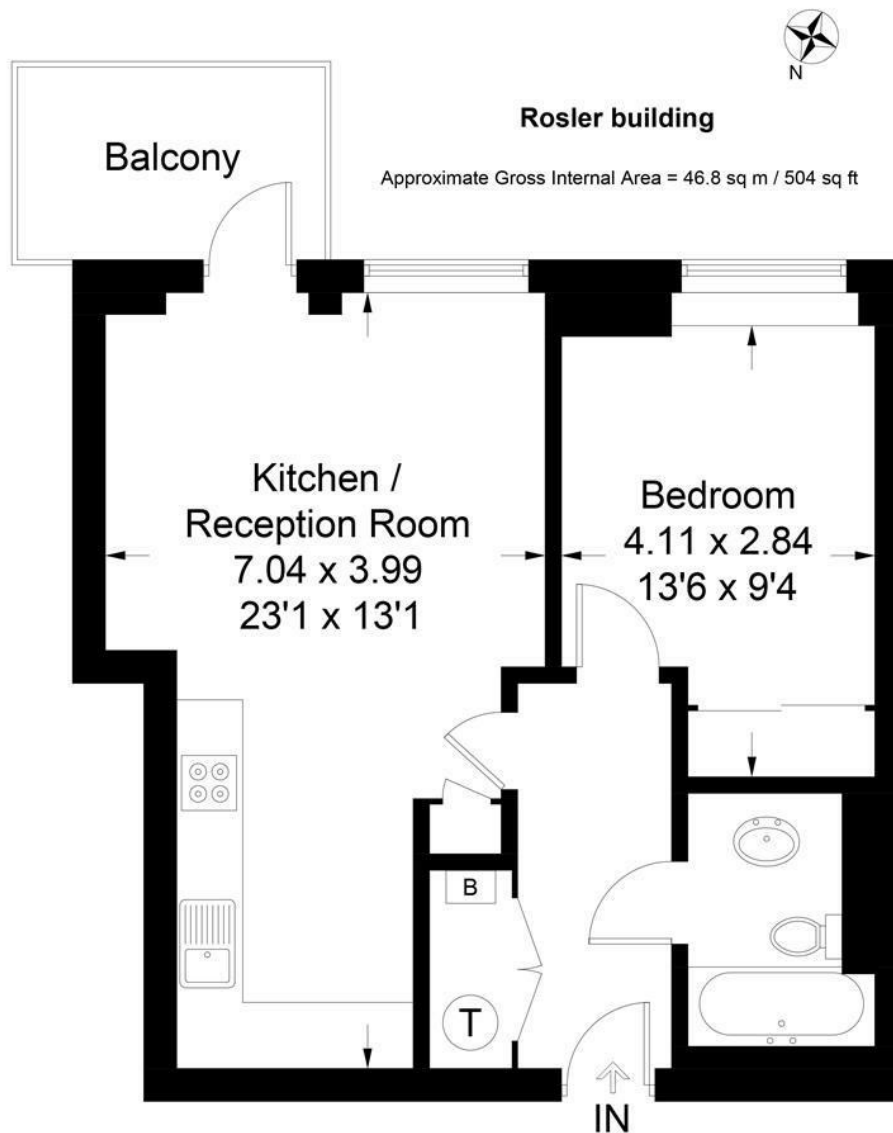
There is a storage bed in the bedroom and a sofa-bed at the property.





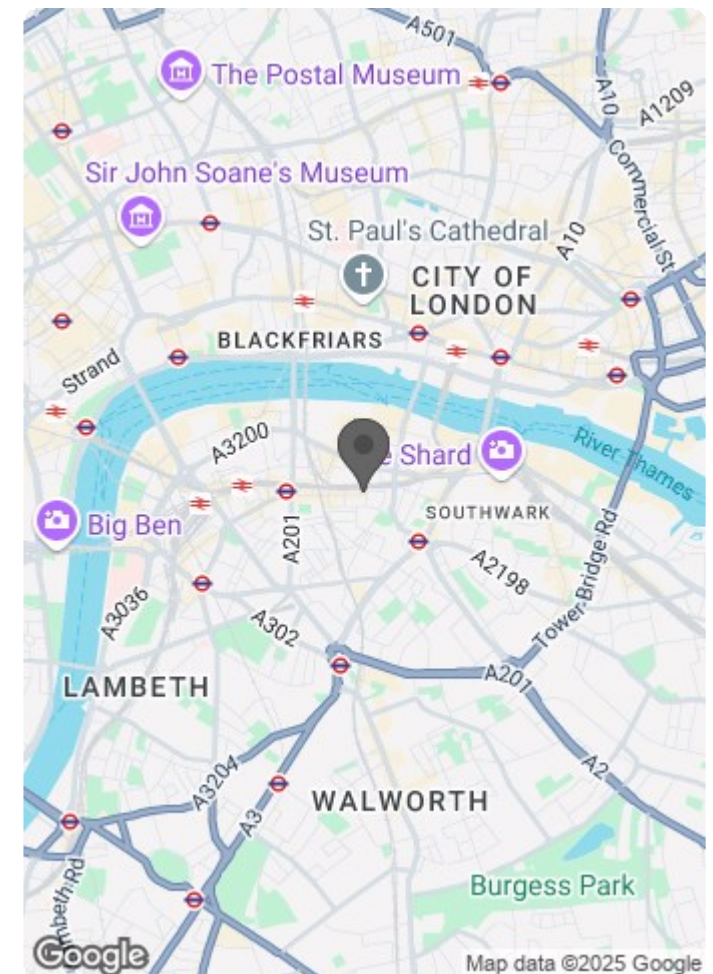






## Second Floor

Illustration for identification purposes only, measurements are approximate, not to scale. floorplansUsketch.com © (ID404507)



Energy Efficiency Rating		
	Current	Potential
Very energy efficient - lower running costs		
(92 plus) A		
(81-91) B	84	84
(69-80) C		
(55-68) D		
(39-54) E		
(21-38) F		
(1-20) G		
Not energy efficient - higher running costs		
England & Wales	EU Directive 2002/91/EC	

Environmental Impact (CO <sub>2</sub> ) Rating		
	Current	Potential
Very environmentally friendly - lower CO <sub>2</sub> emissions		
(92 plus) A		
(81-91) B		
(69-80) C		
(55-68) D		
(39-54) E		
(21-38) F		
(1-20) G		
Not environmentally friendly - higher CO <sub>2</sub> emissions		
England & Wales	EU Directive 2002/91/EC	