



**8 Palm House
London, SE11 5AH
£500 Per Week**

A spacious first floor one bedroom apartment situated in a modern development, Palm House. The reception room is light and bright, and benefits from a wonderful private balcony overlooking the peaceful green stretches of Vauxhall Street and hardwood flooring throughout.

This beautifully laid out one bedroom apartment has a spacious double bedroom and modern and minimalist open plan kitchen. The bathroom is sleek and contemporary, making this a superb London pad.

Located only a short distance to Westminster, Palm House is ideally situated and is only moments away from Albert Embankment and the River Thames. With the property only 8 minutes' walk from Vauxhall Underground and Train Station, transport links are superb.

Council tax - Lamberth, Band D.

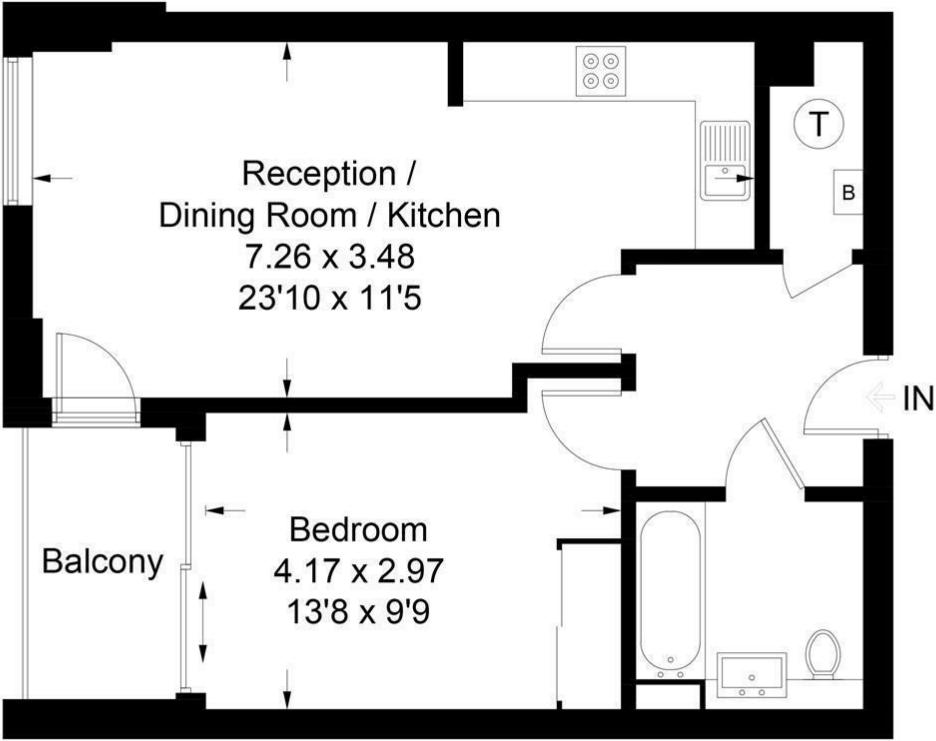






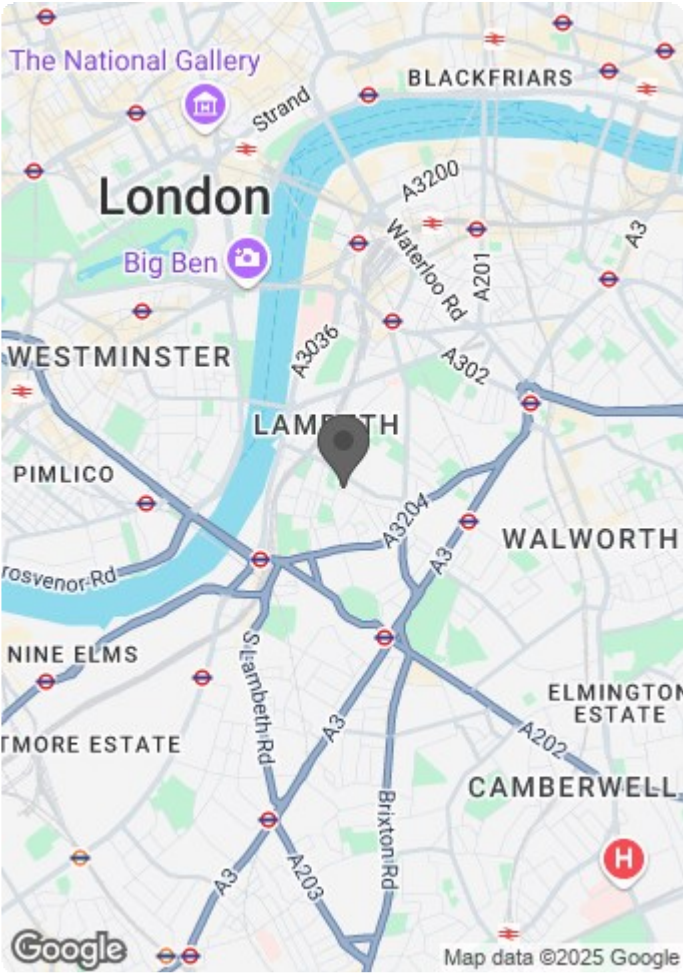
Palm House

Approximate Gross Internal Area = 49 sq m / 532 sq ft



First Floor

Illustration for identification purposes only, measurements are approximate, not to scale. FloorplansUsketch.com © 2017 (ID325920)



Energy Efficiency Rating		
	Current	Potential
Very energy efficient - lower running costs		
(92 plus) A		
(81-91) B	83	83
(69-80) C		
(55-68) D		
(39-54) E		
(21-38) F		
(1-20) G		
Not energy efficient - higher running costs		
England & Wales	EU Directive 2002/91/EC	

Environmental Impact (CO ₂) Rating		
	Current	Potential
Very environmentally friendly - lower CO ₂ emissions		
(92 plus) A	92	92
(81-91) B		
(69-80) C		
(55-68) D		
(39-54) E		
(21-38) F		
(1-20) G		
Not environmentally friendly - higher CO ₂ emissions		
England & Wales	EU Directive 2002/91/EC	