



**Flat 1 Cheltenham House  
Bristol, BS1 1YA  
£450 Per Week**

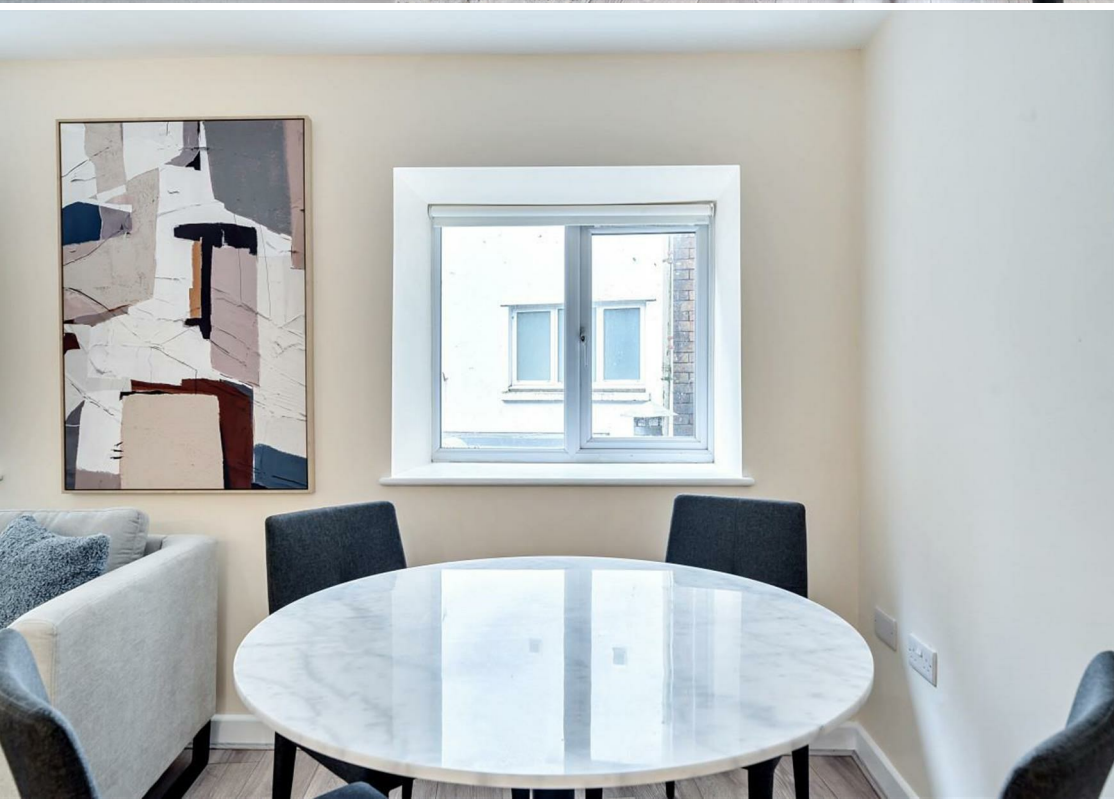
Situated in an enviable location, and in the heart of the city centre, a newly refurbished, and fully furnished Two bedroom, One bathroom apartment located on the first floor of this beautiful period building in Clare Street. The apartment boasts wood flooring throughout, two well-proportioned bedrooms with fitted wardrobes, two newly refurbished bathrooms, a well-proportioned reception room with open plan kitchen, ideal for entertaining.

Cheltenham House is located in Bristol's historic city centre and benefits from close proximity to a plethora of the areas bohemian cafes and restaurants. This fabulous location is to local amenities such as The Watershed, Castle Park, and the local trendy boutiques and shopping malls. Transport facilities are excellent, and both bus services and main line train station are close by.









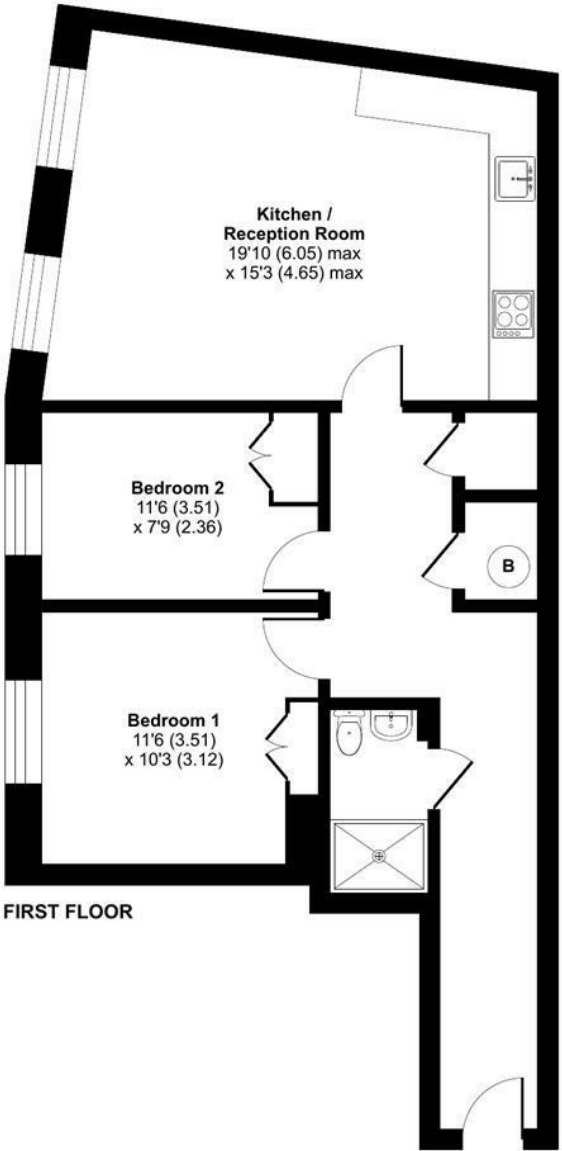




Clare Street, Bristol, BS1

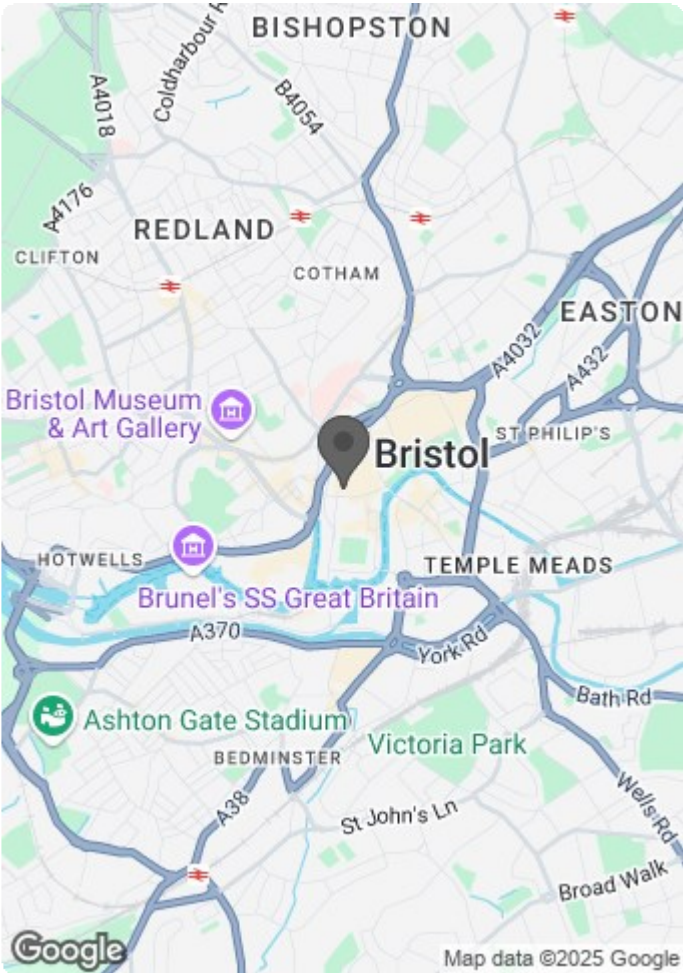
Approximate Area = 705 sq ft / 65.5 sq m

For identification only - Not to scale



Certified  
Property  
Measurer

Floor plan produced in accordance with RICS Property Measurement Standards incorporating International Property Measurement Standards (IPMS2 Residential). © richecom 2024.  
Produced for Mariana Real Estate Ltd. REF: 1087229



Energy Efficiency Rating		
	Current	Potential
Very energy efficient - lower running costs		
(92 plus) A		
(81-91) B		
(69-80) C		
(55-68) D		
(39-54) E		
(21-38) F		
(1-20) G		
Not energy efficient - higher running costs		
England & Wales	EU Directive 2002/91/EC	

Environmental Impact (CO <sub>2</sub> ) Rating		
	Current	Potential
Very environmentally friendly - lower CO <sub>2</sub> emissions		
(92 plus) A		
(81-91) B		
(69-80) C		
(55-68) D		
(39-54) E		
(21-38) F		
(1-20) G		
Not environmentally friendly - higher CO <sub>2</sub> emissions		
England & Wales	EU Directive 2002/91/EC	