



**2004 Principal Tower**  
**Worship Street, London EC2A 2FE**  
**£1,150 Per Week**



Situated on the 20th floor of this award winning Foster and Partners designed building, a two double bedroom luxury apartment with two bathrooms and stunning views. Located in the heart of London's trendy and bohemian Shoreditch, this fabulous apartment has been beautifully furnished for contemporary London living.

The views are truly breath-taking for a life up towards the cloud's.

Residents will benefit from a hotel style 24-hour concierge service and lounge, and a stunning health and fitness suite with a swimming pool, gym and cinema room.

Principal Tower is situated centrally and only a short walk to Liverpool Street Station, providing easy access to numerous Underground links and national rail service options.

No parking.







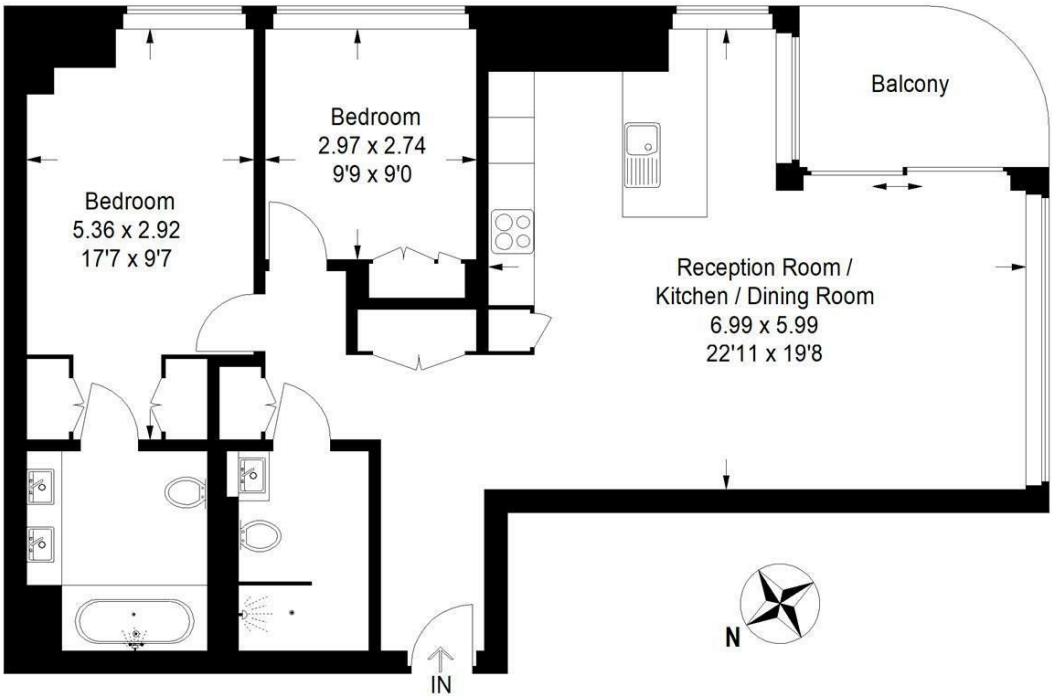






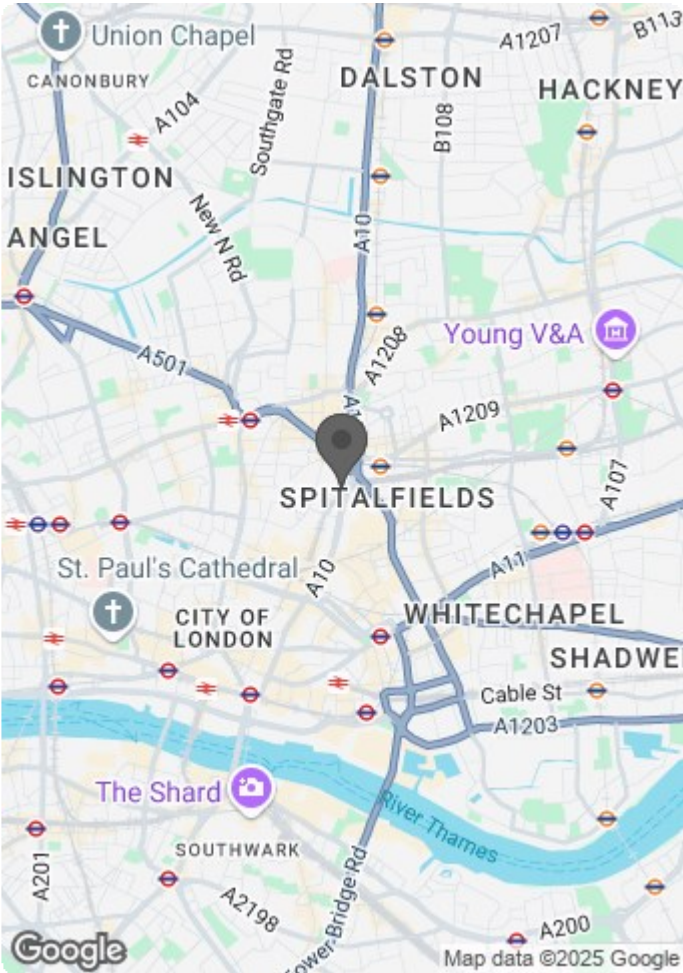
# Principal Tower, EC2A

Approximate Gross Internal Area = 84.3 sq m / 908 sq ft



Twentieth Floor

Illustration for identification purposes only, measurements are approximate, not to scale.



| Energy Efficiency Rating                    |                         |           |
|---|-------------------------|-----------|
|   | Current                 | Potential |
| Very energy efficient - lower running costs |                         |           |
| (92 plus) A                                 |                         |           |
| (81-91) B                                   | 85                      | 85        |
| (69-80) C                                   |                         |           |
| (55-68) D                                   |                         |           |
| (39-54) E                                   |                         |           |
| (21-38) F                                   |                         |           |
| (1-20) G                                    |                         |           |
| Not energy efficient - higher running costs |                         |           |
| England & Wales                             | EU Directive 2002/91/EC |           |

| Environmental Impact (CO <sub>2</sub> ) Rating                  |                         |           |
|---|-------------------------|-----------|
|   | Current                 | Potential |
| Very environmentally friendly - lower CO <sub>2</sub> emissions |                         |           |
| (92 plus) A   |                         |           |
| (81-91) B   |                         |           |
| (69-80) C   |                         |           |
| (55-68) D   |                         |           |
| (39-54) E   |                         |           |
| (21-38) F   |                         |           |
| (1-20) G  |                         |           |
| Not environmentally friendly - higher CO <sub>2</sub> emissions |                         |           |
| England & Wales   | EU Directive 2002/91/EC |           |