

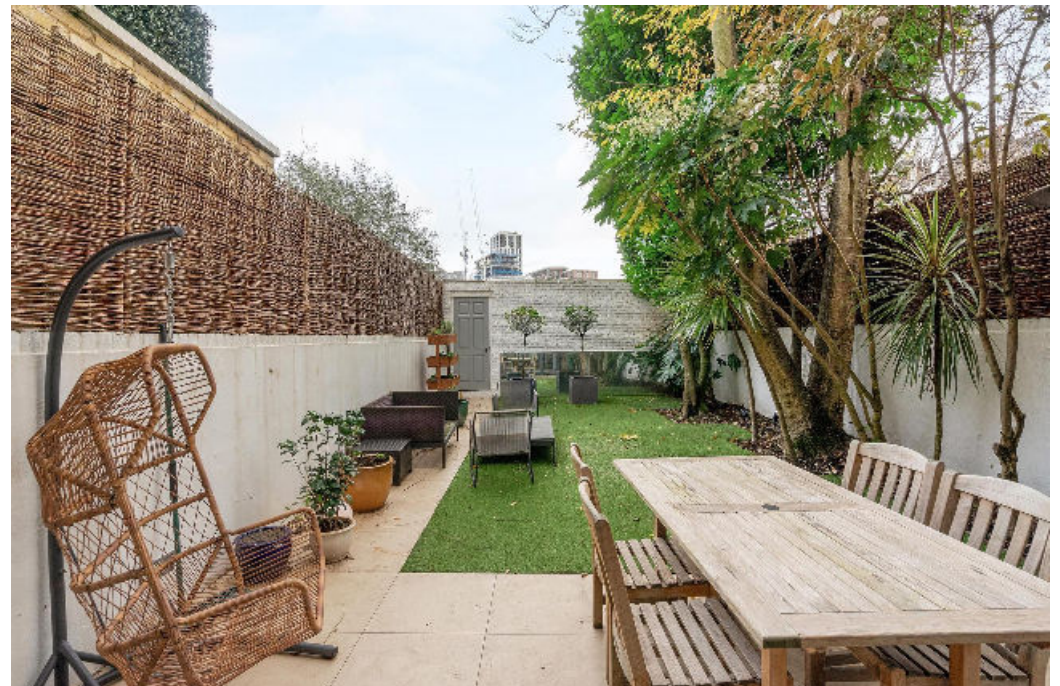


Moore Park Road, London **SW6**

Moore Park Road

London SW6

An impressive five bedroom townhouse situated on the incredibly sought after Moore Park Estate on the border of Chelsea with a 32 foot garden and garage. The living room covers the entire ground floor with a fabulous open plan kitchen/dining/sitting room on the lower. This space is ideal for entertaining with an array of built-in units, appliances, an entrance door to the front and bi-folding doors to the garden which has a single garage accessed via remote gates. There are five bedrooms and four bathrooms on the upper floors, three are en-suite and two of which include walk-in wardrobes. The top floor has access to the roof terrace with 180 degree views.



Guide price: £3,650,000

Tenure: Freehold

Local authority: London Borough of Hammersmith & Fulham

Council tax band: H



Location

Moore Park Road is located close to the Fulham/Chelsea border and within close proximity of the transport links of Fulham Broadway (District Line), as well as the bus routes which lead to and from Chelsea, South Kensington and beyond.





Moore Park Road, SW6



Knight Frank
Fulham
203 New Kings Road
Fulham
SW6 4SR
[knightfrank.co.uk](https://www.knightfrank.co.uk)

I would be delighted to tell you more

Arabella Howard-Evans
020 7751 2402
arabella.howardevans@knightfrank.com



Fixtures and fittings: A list of the fitted carpets, curtains, light fittings and other items fixed to the property which are included in the sale (or may be available by separate negotiation) will be provided by the Seller's Solicitors.

Important Notice: 1. Particulars: These particulars are not an offer or contract, nor part of one. You should not rely on statements by Knight Frank LLP in the particulars or by word of mouth or in writing ("information") as being factually accurate about the property, its condition or its value. Neither Knight Frank LLP nor any joint agent has any authority to make any representations about the property, and accordingly any information given is entirely without responsibility on the part of the agents, seller(s) or lessor(s). 2. Photos, Videos etc: The photographs, property videos and virtual viewings etc. show only certain parts of the property as they appeared at the time they were taken. Areas, measurements and distances given are approximate only. 3. Regulations etc: Any reference to alterations to, or use of, any part of the property does not mean that any necessary planning, building regulations or other consent has been obtained. A buyer or lessee must find out by inspection or in other ways that these matters have been properly dealt with and that all information is correct. 4. VAT: The VAT position relating to the property may change without notice. 5. To find out how we process Personal Data, please refer to our Group Privacy Statement and other notices at <https://www.knightfrank.com/legals/privacy-statement>. Particulars dated December 2024. Photographs and videos dated December 2024.

Knight Frank is the trading name of Knight Frank LLP. Knight Frank LLP is a limited liability partnership registered in England and Wales with registered number OC305934. Our registered office is at 55 Baker Street, London W1U 8AN where you may look at a list of members' names. If we use the term 'partner' when referring to one of our representatives, that person will either be a member, employee, worker or consultant of Knight Frank LLP and not a partner in a partnership. If you do not want us to contact you further about our services then please contact us by either calling 020 3544 0692, email to marketing.help@knightfrank.com or post to our UK Residential Marketing Manager at our registered office (above) providing your name and address.