



Stevenage Road, Fulham SW6

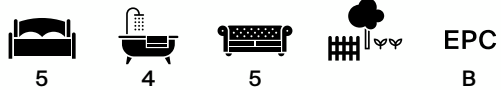


Stevenage Road

Fulham SW6

Located on one of Fulham's most desirable streets, running parallel to the River Thames this impressive townhouse features a stunning Georgian style facade. Designed with family living in mind, this elegant property has been impeccably designed with a range of high-end specifications and characterful features.

The ground floor comprises; a grand entrance hallway, contemporary kitchen/breakfast room, home office/study and a guest WC. The handcrafted kitchen has been fitted with modern cabinets, quartz worktops, and top-of-the-range integrated appliances. The breakfast area features bespoke joinery with doors leading onto private garden with rear pedestrian access to the Thames towpath.

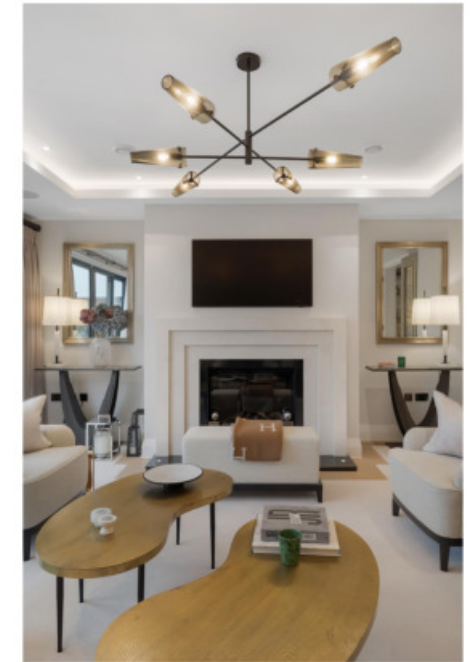


Guide price: £4,250,000

Tenure: Freehold

Local authority: Hammersmith and Fulham

Council tax band: H





The lower ground floor provides flexible living space with a guest bedroom with en suite that can also be used as a gym, and a home cinema which leads onto private covered courtyard garden with glass 'walk on' ceiling. There is a guest WC, laundry room, plant room and ample storage to complete this floor.

Ascending to the first floor, a formal drawing room and dining room occupy the first floor with a bespoke bar joining the spaces and sliding doors leading out to a terrace. There are four bedrooms laid out across the second and third floor, with the impressive principal suite featuring a walk-through dressing room, en suite with separate bath and shower and a private terrace with far reaching river views. There is a family bathroom and en suite to one of the bedrooms on the second floor.

Further benefits include comfort cooling and air conditioning in selected areas, smart home system controlling lighting, video entry and integrated sound systems as well as solar panels.





Stevenage Road is situated in the Bishops Park Conservation Area, an excellent location to enjoy tranquil walks along the river to Hammersmith Bridge, and the green open spaces of Bishops Park.

The shops, restaurants and amenities of Parsons Green and Hammersmith are within easy reach whilst Putney Bridge (District Line) and Hammersmith (Circle, Hammersmith & City and Piccadilly Lines) provide connectivity to London's vibrant city centre with Heathrow Airport accessible by the Piccadilly line from Hammersmith. There are numerous bus routes with nearest bus stop situated on Fulham Palace Road.

The area offers excellent choice of local schooling including Lady Margaret's, Fulham Prep School, Fulham Cross Girls' School, and Fulham Boys School.





Stevenage Road, SW6

Approximate Gross Internal Area
 337.94 sq m / 3,638 sq ft (excluding plant)
 Inclusive Total Area
 349.56 sq m / 3,763 sq ft

This plan is for guidance only and must not be relied upon as a statement of fact. Attention is drawn to the important notice on the last page of the text of the Particulars.

Knight Frank
 Fulham
 203 New Kings Road
 Fulham
 SW6 4SR
knightfrank.co.uk

We would be delighted to tell you more

Arabella Howard-Evans **Joanna Sutherland**
 020 7751 2402 020 7751 2409
arabella.howardevans@knightfrank.jo.sutherland@knightfrank.com



Fixtures and fittings: A list of the fitted carpets, curtains, light fittings and other items fixed to the property which are included in the sale (or may be available by separate negotiation) will be provided by the Seller's Solicitors.
 Important Notice: 1. Particulars: These particulars are not an offer or contract, nor part of one. You should not rely on statements by Knight Frank LLP in the particulars or by word of mouth or in writing ("information") as being factually accurate about the property, its condition or its value. Neither Knight Frank LLP nor any joint agent has any authority to make any representations about the property, and accordingly any information given is entirely without responsibility on the part of the agents, seller(s) or lessor(s). 2. Photos, Videos etc: The photographs, property videos and virtual viewings etc. show only certain parts of the property as they appeared at the time they were taken. Areas, measurements and distances given are approximate only. 3. Regulations etc: Any reference to alterations to, or use of, any part of the property does not mean that any necessary planning, building regulations or other consent has been obtained. A buyer or lessee must find out by inspection or in other ways that these matters have been properly dealt with and that all information is correct. 4. VAT: The VAT position relating to the property may change without notice. 5. To find out how we process Personal Data, please refer to our Group Privacy Statement and other notices at <https://www.knightfrank.com/legals/privacy-statement>. Particulars dated March 2024. Photographs and videos dated March 2024.
 All information is correct at the time of going to print. Knight Frank is the trading name of Knight Frank LLP. Knight Frank LLP is a limited liability partnership registered in England and Wales with registered number OC305934. Our registered office is at 55 Baker Street, London W1U 8AN. We use the term 'partner' to refer to a member of Knight Frank LLP, or an employee or consultant. A list of members names of Knight Frank LLP may be inspected at our registered office. If you do not want us to contact you further about our services then please contact us by either calling 020 3544 0692, email to marketing.help@knightfrank.com or post to our UK Residential Marketing Manager at our registered office (above) providing your name and address.