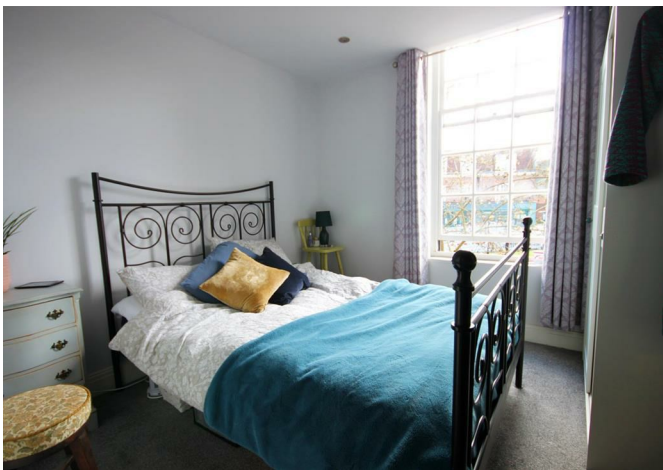




High Street, Esher, KT10 9QY

£1,425



- AVAILABLE MID-MAY
- FIRST FLOOR
- OPEN PLAN LIVING/KITCHEN
- MODERN FIXTURES AND FITTINGS
- 1 BEDROOM APARTMENT
- UNFURNISHED
- ELECTRIC HEATING
- HIGH STREET LOCATION



## Description

A bright and modern one bedroom apartment set on the first floor of this recently renovated building in Esher. Located on the High Street and close to numerous cafes, restaurants and shops, the property offers open plan living, contemporary kitchen, double bedroom and shower room with modern fixtures and fittings throughout.

Hallway - bright and welcoming hallway as you enter the apartment

Bedroom - double bedroom

Shower Room - modern shower room with WC, basin and shower

Living/Dining Room - open plan living with ample space for living and dining

Kitchen - contemporary kitchen with modern appliances throughout

## Situation

Surrounded by peaceful woodland and mature countryside, Esher is a haven for walkers and cyclists looking to get away from the hustle and bustle of the city whilst being in easy reach of Central London. Sought after due to the exceptional links to London and the community feel, Esher provides the perfect balance of rural living and convenience, with nearby Esher and Surbiton offering a wealth of individual shops and restaurants as well as more practical convenience stores for everyday essentials.

Esher and Claygate train stations are just 1 mile away and provide regular and direct services to London Waterloo.

The schooling availability within the area is fantastic, offering an excellent array of both state and independent schools including Esher Church School, Shrewsbury Lodge, Milbourne Lodge, Rowan, Claremont Fan Court and the Cobham ACS International School. There is also excellent rail access to the schools of Wimbledon, Surbiton and Guildford.

<b>EPC Rating</b>	C
<b>Council Tax Band</b>	B

1-3 Church Street, Leatherhead, Surrey, KT22 8DN  
**Tel:** 01372 360444 **Email:** [lettings@patrickgardner.com](mailto:lettings@patrickgardner.com)  
<https://www.patrickgardner.com/>

These particulars, whilst believed to be accurate are set out as a general outline only for guidance and do not constitute any part of an offer or contract. Intending purchasers should not rely on them as statements of representation of fact, but must satisfy themselves by inspection or otherwise as to their accuracy. No person in this firms employment has the authority to make or give any representation or warranty in respect of the property.

