



 **patrick  
gardner**  
LETTINGS

The Cottage, 9a Links Brow, Fetcham, Leatherhead, Surrey, KT22  
9DU

£1,400 PCM





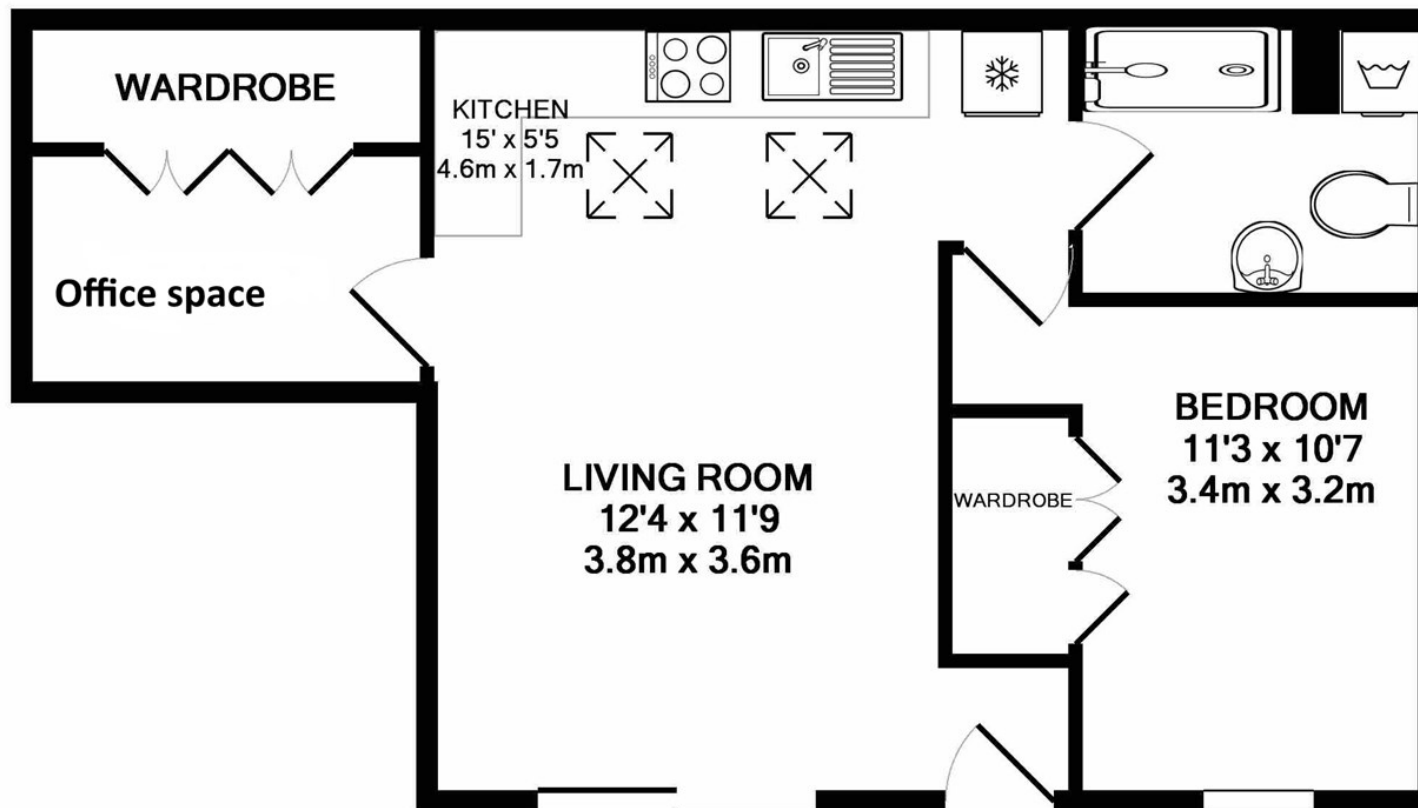
- AVAILABLE END OF MAY
- ONE BEDROOM ANNEXE
- PRIVATE ENCLOSED PATIO
- WATER RATES & ELECTRICITY ARE INCLUDED IN THE RENT
- 2 ALLOCATED PARKING SPACES
- UNFURNISHED
- MODERN FITTED KITCHEN AND BATHROOM
- OPEN PLAN KITCHEN/LIVING AREA
- SEPARATE OFFICE SPACE
- CLOSE TO LEATHERHEAD TOWN CENTRE AND STATION

Description

Situation

Tenure	C
EPC	A
Council Tax Band	Add text here
Lease	Add text here
Service Charge	Add text here
Ground Rent	





**TOTAL APPROX. FLOOR AREA 478 SQ.FT. (44.4 SQ.M.)**

Whilst every attempt has been made to ensure the accuracy of the floor plan contained here, measurements of doors, windows, rooms and any other items are approximate and no responsibility is taken for any error, omission, or mis-statement. This plan is for illustrative purposes only and should be used as such by any prospective purchaser. The services, systems and appliances shown have not been tested and no guarantee as to their operability or efficiency can be given

Made with Metropix ©2019

1-3 Church Street, Leatherhead, Surrey, KT22 8DN  
**Tel:** 01372 360444 **Email:** [lettings@patrickgardner.com](mailto:lettings@patrickgardner.com)  
<https://www.patrickgardner.com/>

These particulars, whilst believed to be accurate are set out as a general outline only for guidance and do not constitute any part of an offer or contract. Intending purchasers should not rely on them as statements of representation of fact, but must satisfy themselves by inspection or otherwise as to their accuracy. No person in this firm's employment has the authority to make or give any representation or warranty in respect of the property.

**patrick  
gardner**  
LETTINGS