



Upper Fairfield Road, Leatherhead

£1,925 PCM



- AVAILABLE NOW
- CHARMING TERRACED EDWARDIAN HOUSE
- OPEN PLAN LIVING AREA
- PERIOD FEATURES
- PRIVATE GARDEN WITH SHED
- UNFURNISHED
- THREE BEDROOMS
- MODERN KITCHEN
- ON STREET PARKING
- DESIRABLE LOCATION, CLOSE TO TOWN CENTRE & TRAIN STATION

Description

Hallway -with under stairs storage cupboard and oak flooring

Kitchen/Breakfast Room - modern kitchen with a range of wall and base units. Patio doors to rear garden.

Dining Room - with rear aspect through to lounge area

Lounge - front aspect room with feature fireplace and attractive bay window.

Upstairs Landing - with airing cupboard housing hot water tank

Bedroom 1 - including fitted wardrobes & chest of drawers

Bedroom 2 - rear aspect room

Bedroom 3 - front aspect room

Family bathroom - white bathroom suite with WC, sink, bath, shower cubicle with electric shower, & heated towel rail

Rear Garden - with patio area & garden shed

Situation

Leatherhead town centre offers a variety of shops, quality independent restaurants and coffee shops. Within the area there are highly regarded both state and private schools including St Andrews R.C. School, St John's School and Downsland School whilst at nearby Mickleham is Box Hill School.

Leatherhead's mainline railway station offers commuter access to London Waterloo & Victoria and access south to Guildford & Dorking. Junction 9 of the M25 at Leatherhead provides access to the national motorway network together with Heathrow and Gatwick Airports.

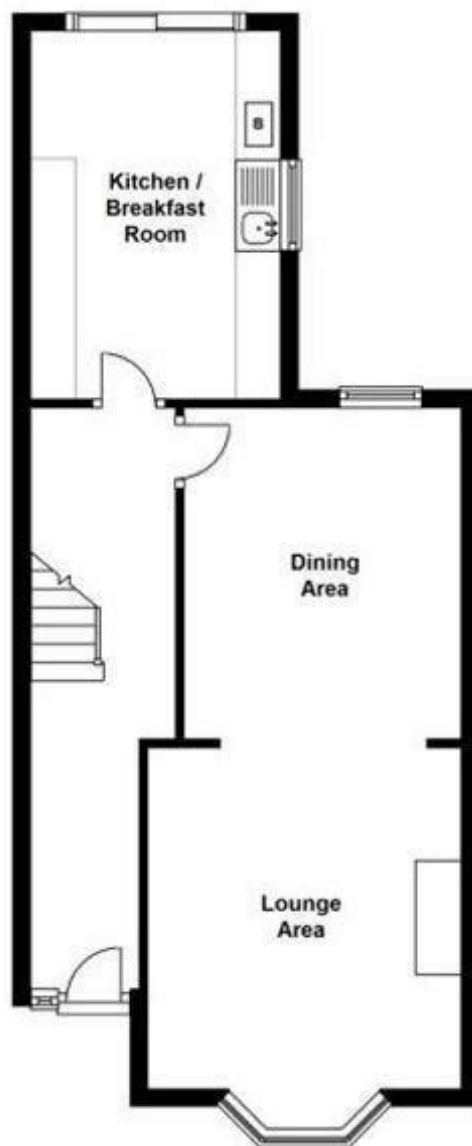
The general area abounds in Green Belt countryside, much of which is National Trust owned offering plentiful of outdoor activities at Bocketts Farm, Denbies Wine Estate, and Polesden Lacy. Epsom Downs (home of the famous Epsom Derby horse race) is within 15 minutes drive and Headley Heath is just 10 minutes away.

EPC D

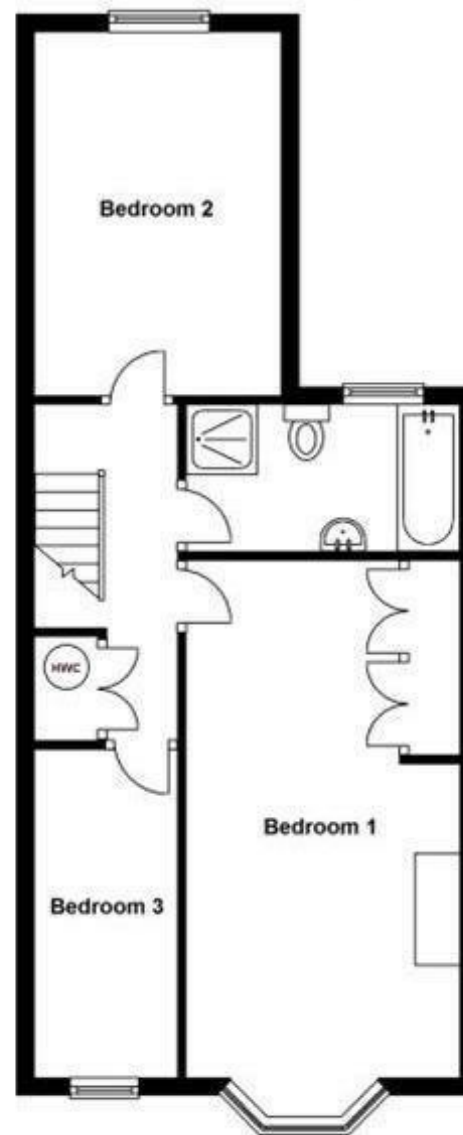
Council Tax Band D



Ground Floor
Approx. 45.7 sq. metres (492.0 sq. feet)



First Floor
Approx. 47.1 sq. metres (506.9 sq. feet)



1-3 Church Street, Leatherhead, Surrey, KT22 8DN
Tel: 01372 360444 **Email:** lettings@patrickgardner.com
<https://www.patrickgardner.com/>

These particulars, whilst believed to be accurate are set out as a general outline only for guidance and do not constitute any part of an offer or contract. Intending purchasers should not rely on them as statements of representation of fact, but must satisfy themselves by inspection or otherwise as to their accuracy. No person in this firm's employment has the authority to make or give any representation or warranty in respect of the property.