



Wolsey Road, Esher

£2,300 PCM



- AVAILABLE NOW
- FABULOUS TWO BEDROOM APARTMENT
- BATHROOM AND SHOWER ROOM
- STYLISH KITCHEN WITH APPLIANCES
- CYCLE STORAGE
- UNFURNISHED
- ARRANGED OVER TWO FLOORS
- SPACIOUS KITCHEN/LIVING.DINING AREA
- JULIET BALCONIES WITH FANTASTIC VIEWS
- 1 MILE FROM ESHER STATION

Description

Hallway - a long hall and welcoming hallway

Kitchen/Dining/Living Area - a wonderful light entertaining space with a wall of bi-fold doors opening onto a Juliet balcony and two large windows in the kitchen. There is ample space for a large dining table and chairs and a seating arrangement. With fabulous views over neighbouring roof tops

Kitchen - the kitchen units are white with contrasting black quartz worktops and a peninsula unit offering storage as well as breakfast bar seating on the far side

Bathroom - with contemporary fixtures and fittings and feature triangular window

Bedroom 1 - the pitched roof creates a feeling of space and a Juliet balcony offering far reaching views

Bedroom 2 - with a feature triangular window

The communal hallway also offers cycle storage

Situation

Surrounded by peaceful woodland and mature countryside, Esher is a haven for walkers and cyclists looking to get away from the hustle and bustle of the city whilst being in easy reach of Central London. Sought after due to the exceptional links to London and the community feel, Esher provides the perfect balance of rural living and convenience, with nearby Esher and Surbiton offering a wealth of individual shops and restaurants as well as more practical convenience stores for everyday essentials.

Esher and Claygate train stations are just 1 mile away and provide regular and direct services to London Waterloo.

The schooling availability within the area is fantastic, offering an excellent array of both state and independent schools including Esher Church School, Shrewsbury Lodge, Milbourne Lodge, Rowan, Claremont Fan Court and the Cobham ACS International School. There is also excellent rail access to the schools of Wimbledon, Surbiton and Guildford.

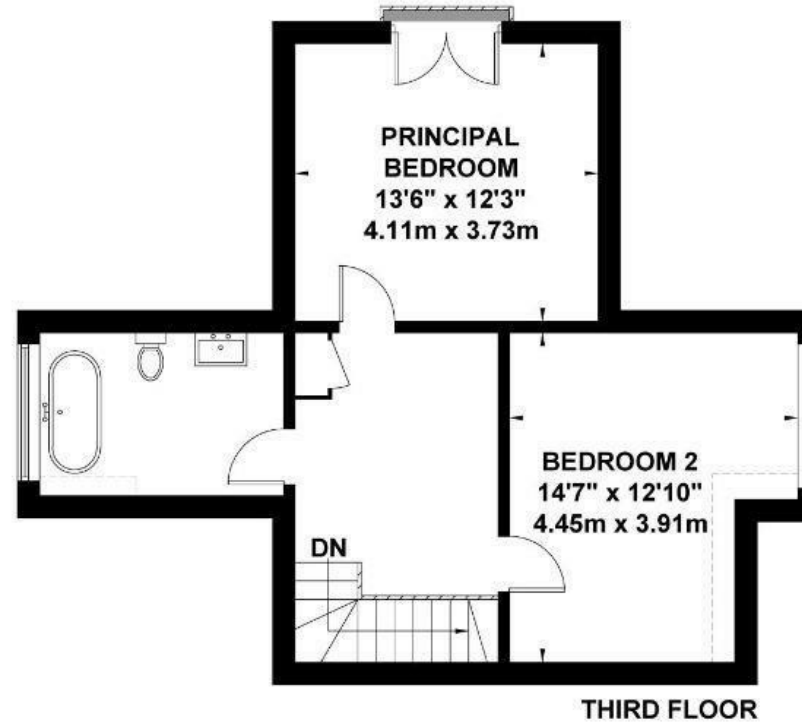
EPC

E



Wolsey Road, Esher

Approximate Gross Internal Area = 102.8 sq m / 1106 sq ft



Exposure House © 2024
www.exposure.house

Whilst every attempt has been made to ensure the accuracy of this floor plan, measurements of doors, windows and rooms are approximate and no responsibility is taken for any error or omission. This illustration is for identification purpose only. Measured and drawn accordance with RICS guidelines. Not drawn to scale, unless stated. Dimensions shown are to the nearest 3" and are to the points indicated by the arrow heads.

1-3 Church Street, Leatherhead, Surrey, KT22 8DN
Tel: 01372 360444 **Email:** lettings@patrickgardner.com
<https://www.patrickgardner.com/>

These particulars, whilst believed to be accurate are set out as a general outline only for guidance and do not constitute any part of an offer or contract. Intending purchasers should not rely on them as statements of representation of fact, but must satisfy themselves by inspection or otherwise as to their accuracy. No person in this firm's employment has the authority to make or give any representation or warranty in respect of the property.

**patrick
gardner**
LETTINGS