

PS

Flat 3, Ferryman, 1 Brownsea Road, Sandbanks BH13 7QW

£1,750 PCM



Flat 3 The Ferryman

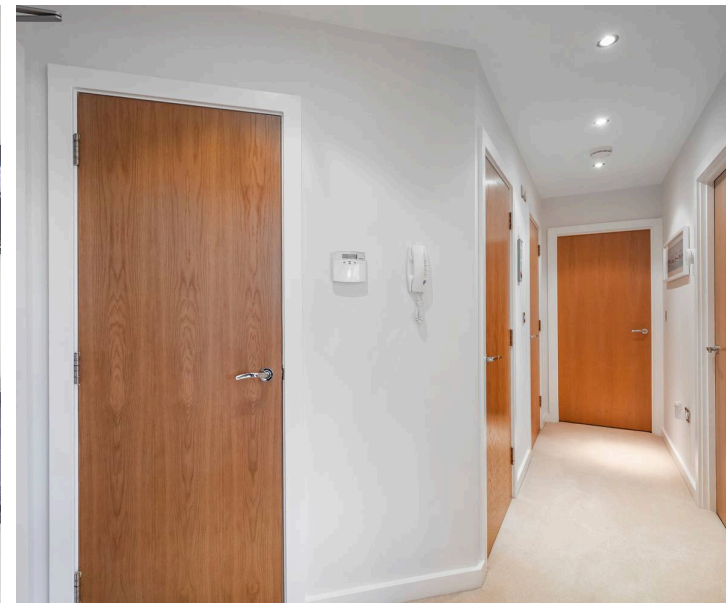
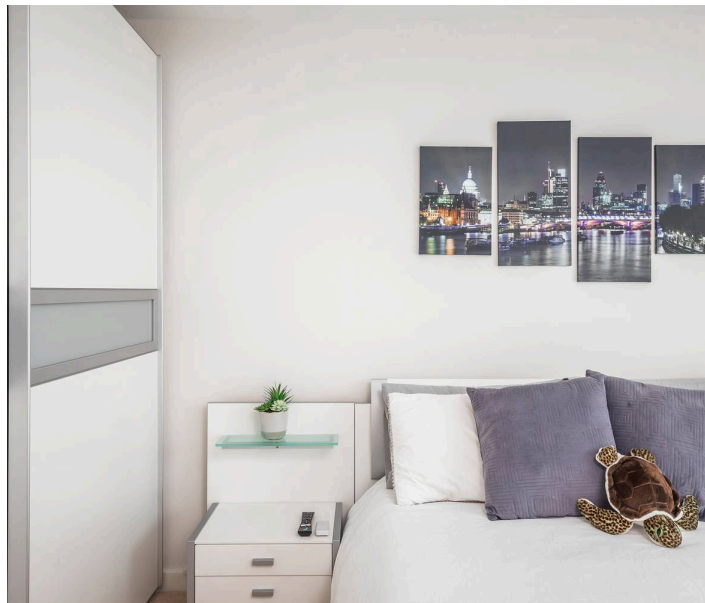
Sandbanks, Poole

Available immediately. This is a modern two double bedroom, two bath/shower rooms, first floor apartment. Situated on a quiet road on the famous Sandbanks peninsula, a short walk to the stunning beaches. The property benefits from a gated entrance and parking space.

- Sandbanks Location
- Ensuite & family bathroom
- Open plan Kitchen / dining / living
- BH13 Location
- Allocated parking space
- Close to the beach
- Offered on a fully-furnished basis
- Unfortunately, this property does not allow pets
- Available Immediately
- EPC Rating: B

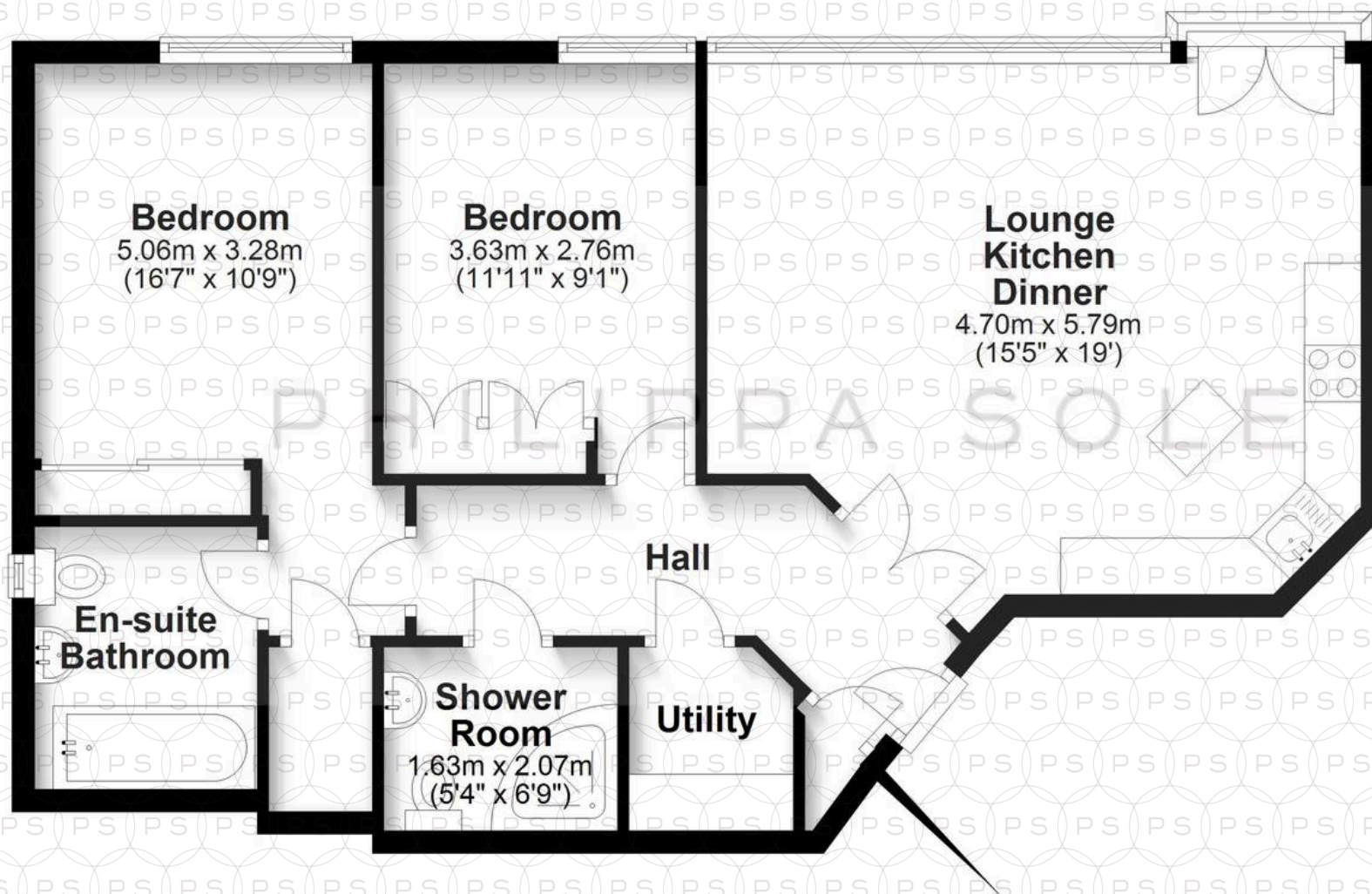


Two bedroom first floor apartment, one en-suite in a purpose built block of only 4 apartments. The property benefits from a family bathroom and en-suite off the master. The open plan lounge/ kitchen area is beautifully lit by the large window overlooking the front of the property. The property benefits from a gated entrance and parking space. Immaculate presentation throughout and both bedrooms have wardrobes. Offered on a fully-furnished basis. Unfortunately, this property does not allow pets.



Floor Plan

Approx. 70.0 sq. metres (753.4 sq. feet)



Total area: approx. 70.0 sq. metres (753.4 sq. feet)

Bournemouth Energy Floor Plans are provided for illustration/identification purposes only. Not drawn to scale, unless stated and accept no responsibility for any error, omission or mis-statement. Dimensions shown are to the nearest 7.5 cm / 3 inches. Total approx area shown on the plan may include any external terraces, balconies and other external areas. To find out more about Bournemouth Energy please visit www.bournemouthenergy.co.uk (Tel: 01202 556006)

Plan produced using PlanUp.



Philippa Sole Ltd

Philippa Sole 3A Springfield Road, Ashley Cross - BH14 0LG

01202 747999 • enquiries@philippasole.co.uk • www.philippasole.co.uk

All statements in these particulars are made without responsibility on the part of Philippa Sole Ltd or the vendor. Neither Philippa Sole Ltd nor anyone in its employment or acting on its behalf has the authority to make any representation or warranty in relation to this property, detailed survey or tested services and fittings. Room sizes are approximate.