

PS

Flat 4, Hawkhurst, 59 Haven Road - BH13 7DN

Poole

£2,500 pcm

# Flat 4

Hawkhurst, Poole

Experience luxurious coastal living with this newly constructed two double bedroom, two-bathroom luxury ground-floor apartment. Nestled in the highly coveted Canford Cliffs BH13 area, this bright and airy abode offers a perfect blend of elegance and modern convenience. It is ideally located within walking distance to the beach via Flaghead Chine and boasts a convenient pathway leading directly to Canford Cliffs Village.

- Gated footpath down to the beach at Flaghead chine
- Bright and Airy Open-Plan Living Area
- 2 Double bedrooms with ensuite to the principal
- Modern Kitchen with High-End appliances
- Secure underground parking and bike store





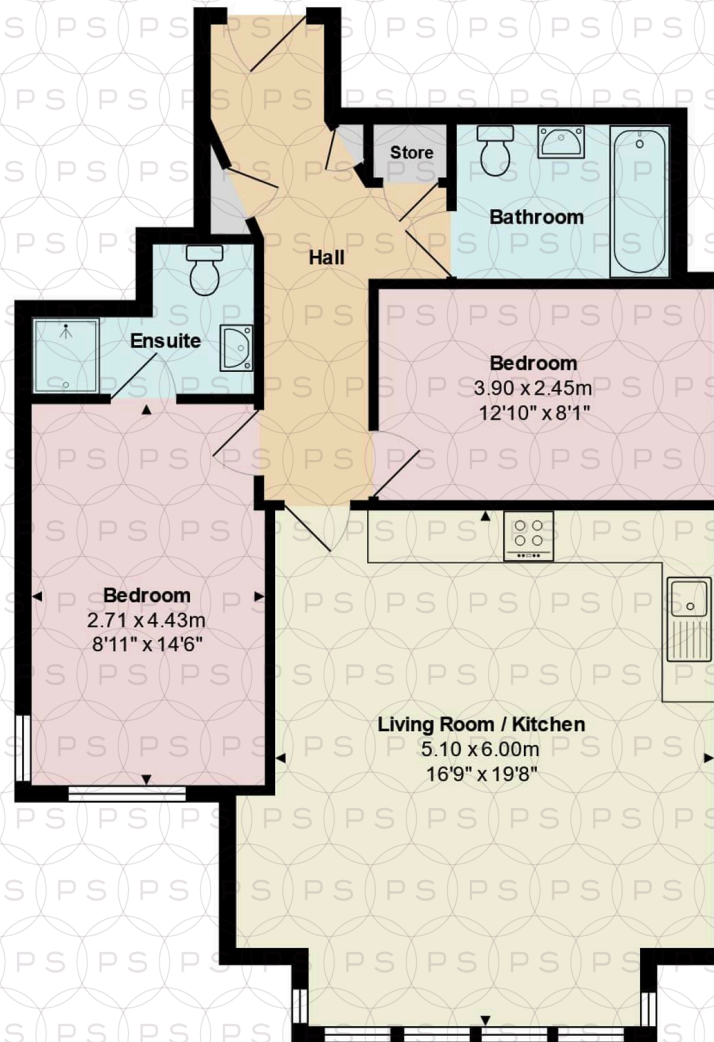


The apartment boasts a spacious open-plan living area. The minimalistic indigo matte finish kitchen, accented with rose gold handles and a 20mm marble quartz worktop, is equipped with high-end Bosch appliances including an induction hob, cooker hood, integrated single oven and microwave, as well as an integrated 70/30 fridge/freezer, dishwasher, and washer/dryer. The kitchen, living room, and hallway feature Amtico wood-effect flooring, enhancing the contemporary feel of the space. The versatile second double bedroom is equally spacious, and a further bathroom boasts a bath with an overhead shower, finished to the same high standard. Designed for comfort and convenience, the apartment is equipped with a gas boiler providing underfloor heating throughout, a water softener, LED lighting, polished chrome electrical fittings, Sky Q readiness, and high-level TV points.

Additional features include a secure entry system and a lift to all floors. Residents benefit from secure underground parking for one vehicle, pre-wired for electric car charging. There are also two additional visitor parking spaces available underground. Communal facilities include access to a secure bike store and the beautifully landscaped communal gardens, which lead to a footpath providing direct access to Canford Cliffs Beach for leisurely strolls and relaxation.

Conveniently located near Canford Cliffs Village and Lilliput Village, residents have access to an array of local amenities including fine dining restaurants, cozy cafes, and boutique shops. The area is renowned for its vibrant community and culinary scene, offering a variety of cuisines to satisfy every palate. The nearby marinas provide opportunities for sailing and watersports enthusiasts. Excellent transport links, including the A338 out of Bournemouth and nearby train stations, offer easy commutes to London Waterloo. Situated in one of the most sought-after areas, the property is just a short distance from the golden sands of Canford Cliffs Beach, offering an unparalleled lifestyle of coastal serenity and urban convenience. The gated pedestrian access down Flaghead Chine to the beach allows for effortless enjoyment of seaside activities, scenic walks, and breathtaking sunsets.





Total Area: 72.0 m<sup>2</sup> ... 775 ft<sup>2</sup>

All measurements are approximate and for display purposes only





## Philippa Sole Ltd

Philippa Sole, 3A Springfield Road, Ashley Cross - BH14 0LG

01202 747999 • [lettings@philippasole.co.uk](mailto:lettings@philippasole.co.uk) • [www.philippasole.co.uk](http://www.philippasole.co.uk)

All statements in these particulars are provided without responsibility on the part of Philippa Sole Ltd or the vendor. Neither Philippa Sole Ltd nor any individual employed by or acting on its behalf is authorised to make any representation or warranty regarding this property. Room measurements are approximate, and no detailed surveys, service inspections, or fittings tests have been conducted.