

PHILIPPA SOLE

sales | lettings | search

316 Sandbanks Road, Poole - BH14 8HX

Poole

£6,500 pcm

PHILIPPA SOLE
01202 747999

LET & MANAGED

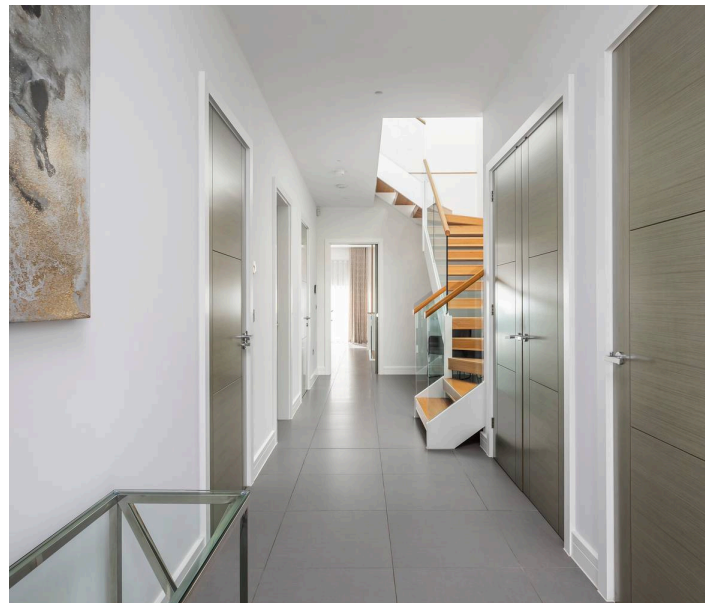
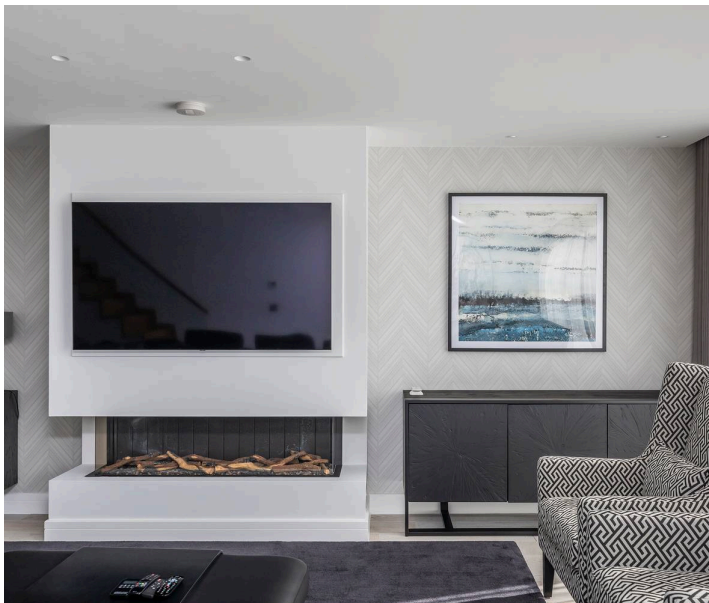


Overview:

316 Sandbanks Road

This exquisite family home in the heart of Lilliput is set out over 3 floors and offers spacious accommodation throughout. Features include an impressive open plan kitchen/living area, separate living room with feature fireplace, study, utility and downstairs cloakroom. There are four luxurious bedrooms, with the master suite benefiting from twin dressing rooms. There is a range of terracing offering stunning views over Poole harbour and a sunny South-West facing garden to the rear. This property is available fully furnished from January 2025.

As you enter the property you are greeted into bright and elegant hallway which leads you into the impressive kitchen/living area. Floor to ceiling windows flood this space with natural light where there is access to a balcony offering harbour views and additional space for entertaining. A bespoke staircase leads down into a delightful living room with a feature fireplace and bi-fold doors leading onto external terracing. The lower floor also features a contemporary, bright study with glass walls and an en-suite bedroom with fitted wardrobes. The oak staircase leads up to the first floor landing which is a wonderfully open and airy space and provides access to three further bedrooms and family bathroom. The sumptuous master suite boasts a luxurious bathroom and twin dressing rooms offering plentiful storage. There are floor to ceiling windows with terracing that offers views over Poole harbour. Two further bedrooms and a beautiful family bathroom can be found to the front of the property. This beautiful home offers

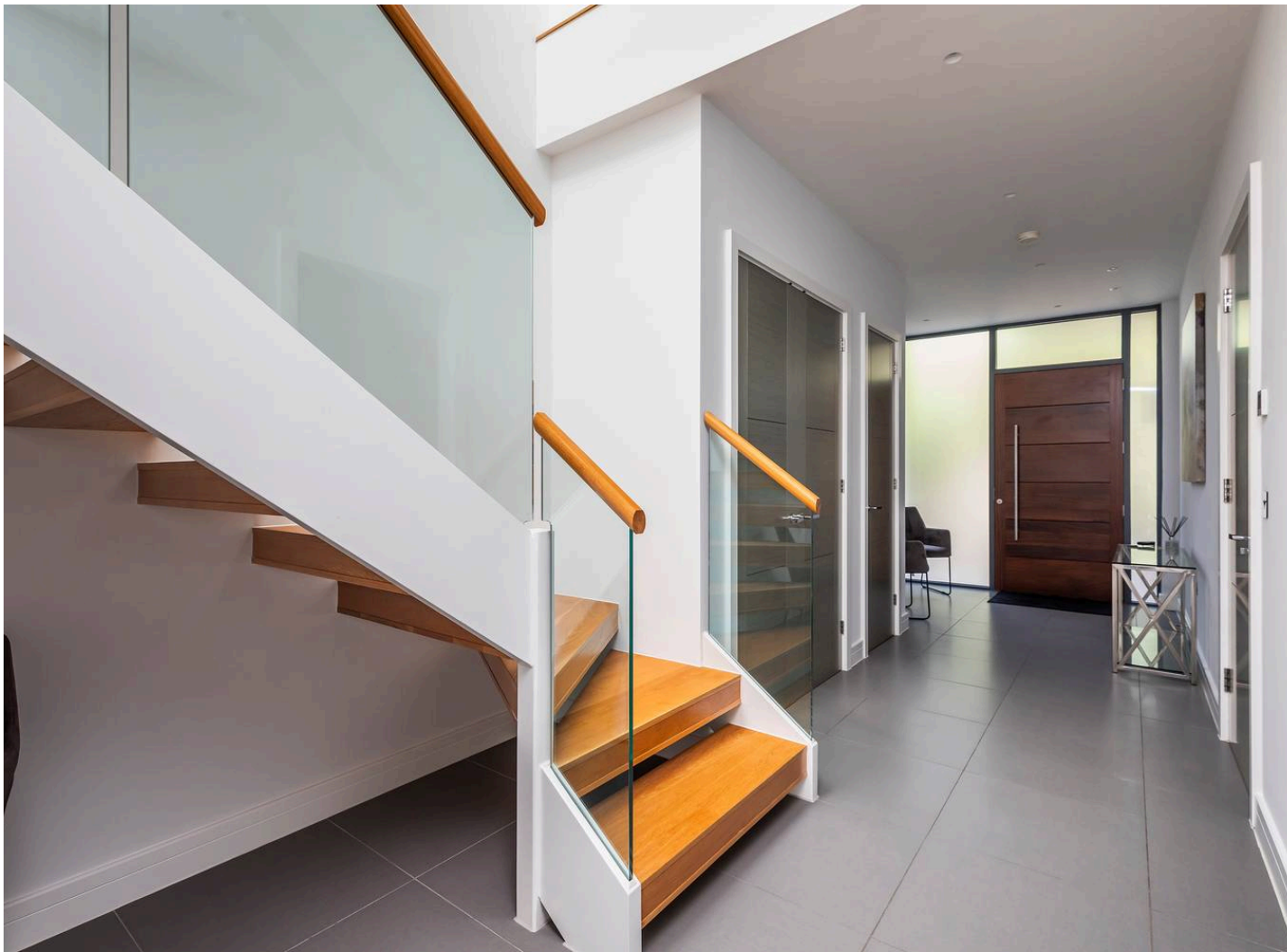




Property Details:

This exquisite family home in the heart of Lilliput is set out over 3 floors and offers spacious accommodation throughout. Features include an impressive open plan kitchen/living area, separate living room with feature fireplace, study, utility and downstairs cloakroom. There are four luxurious bedrooms, with the master suite benefiting from twin dressing rooms. There is a range of terracing offering stunning views over Poole harbour and a sunny South-West facing garden to the rear. This property is available fully furnished from January 2025.

As you enter the property you are greeted into bright and elegant hallway which leads you into the impressive kitchen/living area. Floor to ceiling windows flood this space with natural light where there is access to a balcony offering harbour views and additional space for entertaining. A bespoke staircase leads down into a delightful living room with a feature fireplace and bi-fold doors leading onto external terracing. The lower floor also features a contemporary, bright study with glass walls and an en-suite bedroom with fitted wardrobes. The oak staircase leads up to the first floor landing which is a wonderfully open and airy space and provides access to three further bedrooms and family bathroom. The sumptuous master suite boasts a luxurious bathroom and twin dressing rooms offering plentiful storage. There are floor to ceiling windows with terracing that offers views over Poole harbour. Two further bedrooms and a beautiful family bathroom can be found to the front of the property. This beautiful home offers tremendous living accommodation and the high



Location & Key Facts:

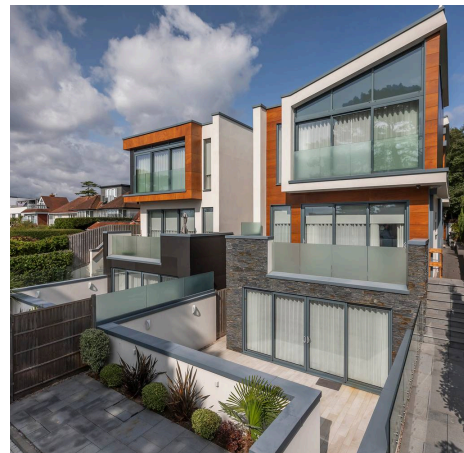
Located in prestigious Lilliput, the amenities, shops and cafes are just a short walk away. The award winning beaches at Sandbanks are close by as too is the Championship Parkstone Golf Club. There are excellent rail links into London Waterloo in under 2 hours and is within catchment for the highly reputable Lilliput school.

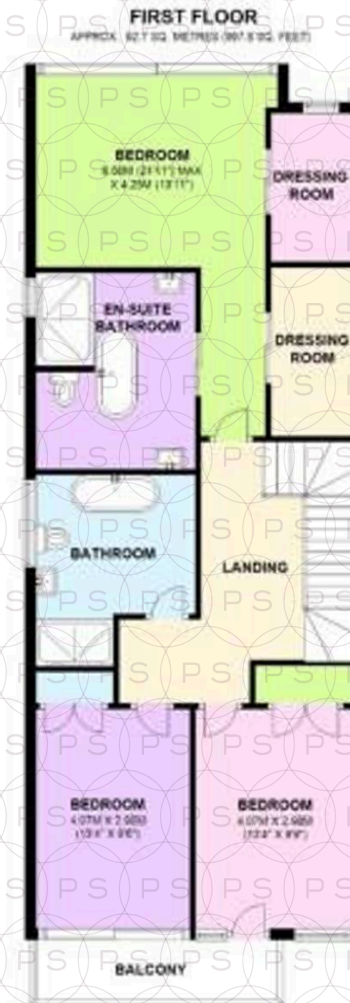
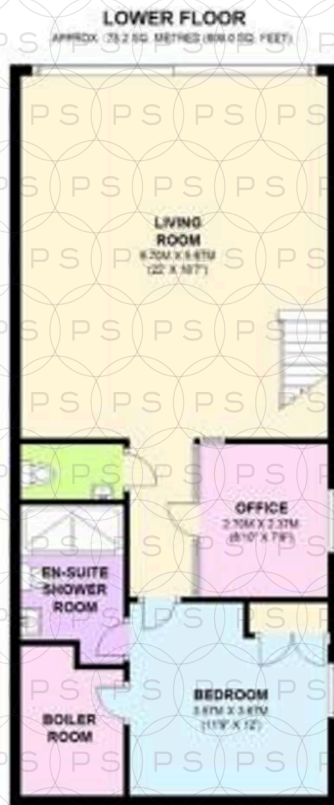
Council Tax band: H

Tenure: Freehold

EPC Energy Efficiency Rating: B

EPC Environmental Impact Rating: B





TOTAL AREA: APPROX. 258.4 SQ. METRES (2781.9 SQ. FEET)

Bournemouth Energy Floor Plans are provided for illustration/identification purposes only. Not drawn to scale, unless stated and accept no responsibility for any error, omission or mis-statement. Dimensions shown are to the nearest 7.5 cm / 3 inches. Total approx area shown on the plan may include any external terraces, balconies and other external areas. To find out more about Bournemouth Energy please visit: www.bournemouthenergy.co.uk (Tel: 01202 556098)
Plan produced using PlanIt.



Philippa Sole

Philippa Sole, 3A Springfield Road - BH14 0LG

01202 747999 • enquiries@philippasole.co.uk • www.philippasole.co.uk

All statements in these particulars are made without responsibility on the part of Philippa Sole Ltd or the vendor. Neither Philippa Sole Ltd nor anyone in its employment or acting on its behalf has the authority to make any representation or warranty in relation to this property, detailed survey or tested services and fittings. Room sizes are approximate.