

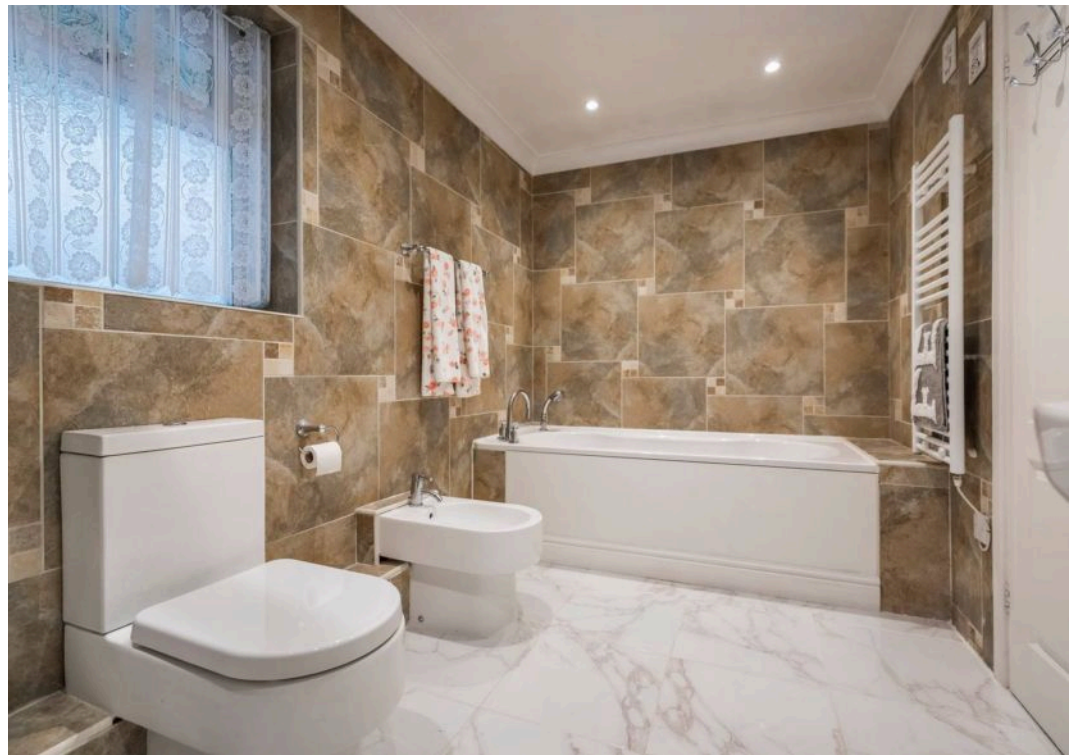
PS

12 Sandy Way, Bournemouth - BH10 7DL

£770,000









# 12 Sandy Way

## Bournemouth

A unique four double bedroom, detached property located in a quiet tree lined road which only the locals seem know. Since owning, the present owners have upgraded the property throughout including luxurious carpets and solid wood flooring. With four modern and contemporary bath/shower rooms, open plan living and scope to extend, makes this the perfect home to grow in.

A tucked away woodland retreat and yet close to all transport links, local shops and schools, making this the perfect home, whatever your needs may be.

- Versatile and spacious accommodation
- 4 Double bedroom
- 4 Luxury bath/shower rooms
- Semi open plan kitchen/dining/living room
- Large conservatory
- Off road parking for a number of vehicles
- Scope to extend into the spacious roof space subject to the relevant planning permission/building regs.
- The garden offers a good degree of privacy
- Quiet tree lined road
- Close to local amenities
- Council Tax Band E
- Approx floor area 3163 sq.ft. / 293.9 sq.m.
- Freehold





This four bedroom property provides versatile and spacious accommodation, presented over two floors with an internal staircase leading to the lower ground level where you will find the integral garage/games room. Positioned in an idyllic setting, on an elevated plot with views to the tree canopies. The gated entrance and a few steps lead you to the front of the property with a paved terrace which is the beginning of many sunbathing and entertainment area's. The remainder of the garden has been thoughtfully landscaped creating lawned, decked and paved area's catching the sun at various times of the day. Without doubt the heart of the house is the day to day kitchen and living space. The kitchen is fitted with a range of white floor and wall mounted units, integrated appliances and complemented by quartz worktops, with the added bonus of a walk-in pantry. From here, you lead through the dining area to the lounge and garden room beyond. This room is where most of the day is spent, summer and winter with French doors to a paved terrace with Gazebo and steps to other hidden terraced and decked area's in the garden. The ground floor further offers three double bedrooms, each with built in wardrobes, two have en suite bath/shower room and the third is serviced by a separated shower room. There is a separate utility with plumbing for a washing machine and tumble drier. The final bedroom is to be found on the first floor, with a walk through dressing room and en suite shower room. This is where the property offers an opportunity to extend.

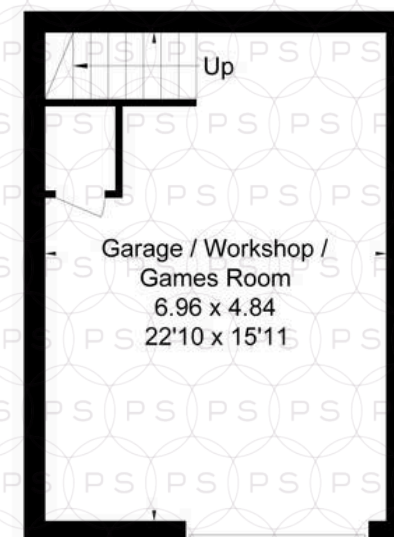
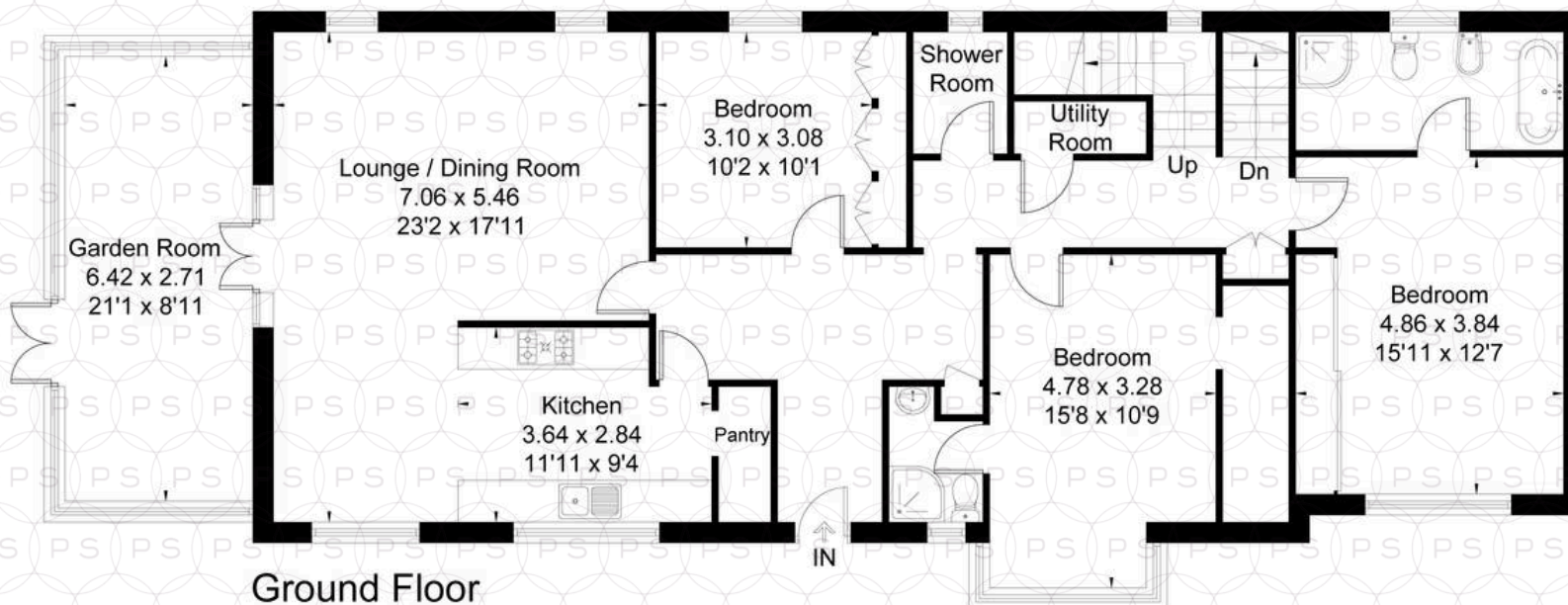
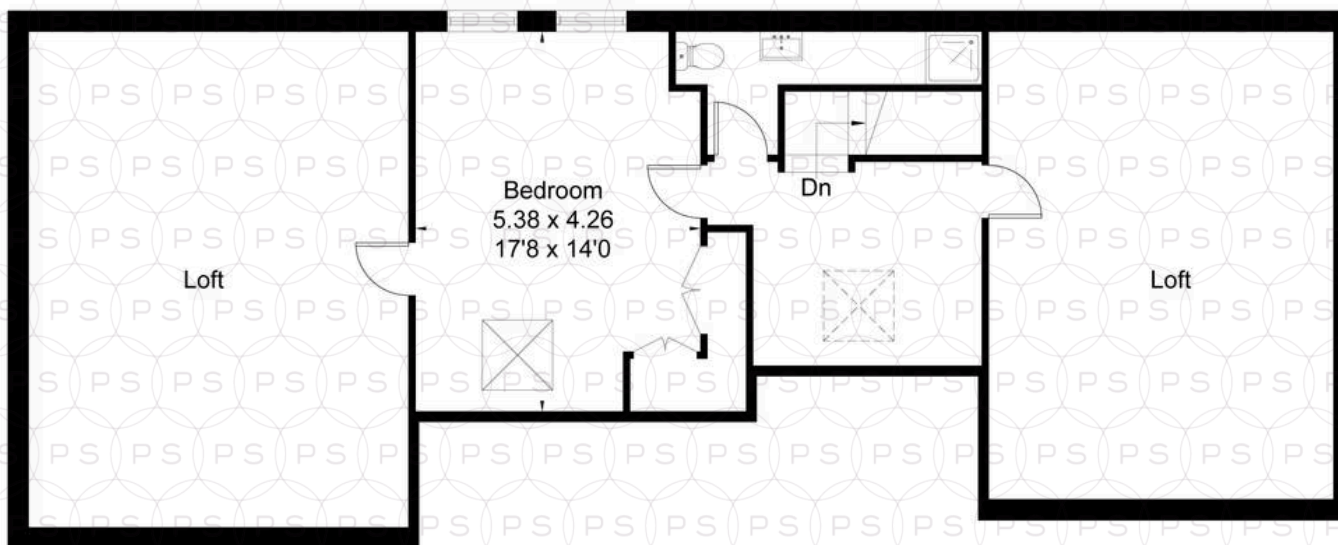
#### LOCATION:

The transport links in this area are fantastic. For holidays in the sun Bournemouth International Airport is just 3.6 miles, Bournemouth Railway Station is approximately 4 miles with a direct line to London Waterloo in 2 hours and moments away is the bus stop relieving the stress of day to day driving. There is an abundance of highly regarded schools nearby including Bournemouth School for boys and the shopping centre of Castlepoint, which will cater for all your needs is approximately 2 miles away.





Approximate Floor Area = 293.9 sq m / 3163 sq ft







## Philippa Sole

Philippa Sole, 3A Springfield Road - BH14 0LG

01202 747999 • [enquiries@philippasole.co.uk](mailto:enquiries@philippasole.co.uk) • [www.philippasole.co.uk](http://www.philippasole.co.uk)

All statements in these particulars are made without responsibility on the part of Philippa Sole Ltd or the vendor. Neither Philippa Sole Ltd nor anyone in its employment or acting on its behalf has the authority to make any representation or warranty in relation to this property, detailed survey or tested services and fittings. Room sizes are approximate.